

A vibrant rainbow arches over a large body of water, likely Lake Burley Griffin in Canberra. A tall, powerful water fountain is visible on the left, creating a misty spray. In the background, a large, modern building with a flat roof and many windows is situated behind a line of trees. The sky is a clear, bright blue. The foreground shows a grassy area and a paved path.

# TO KNOW THE REASON FOR THINGS

## Re-engaging with Canberra's planners, designers and visions

*Professor Ken Taylor*





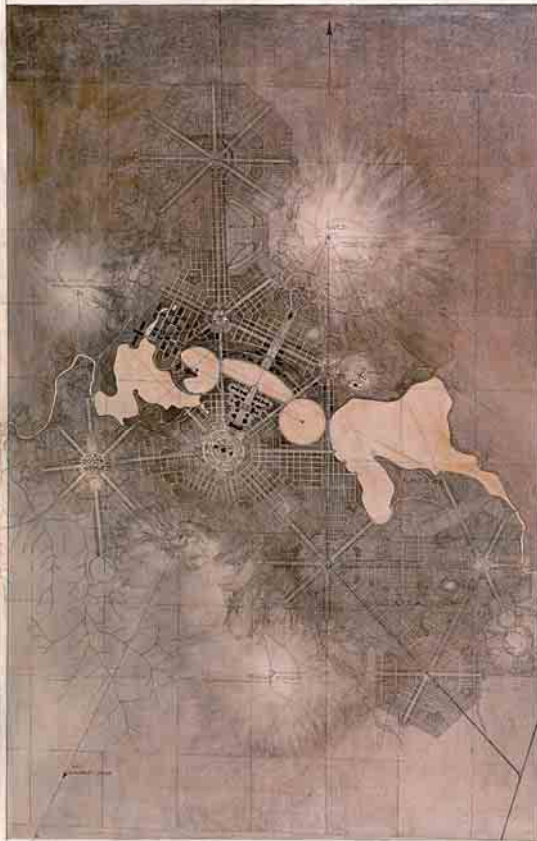




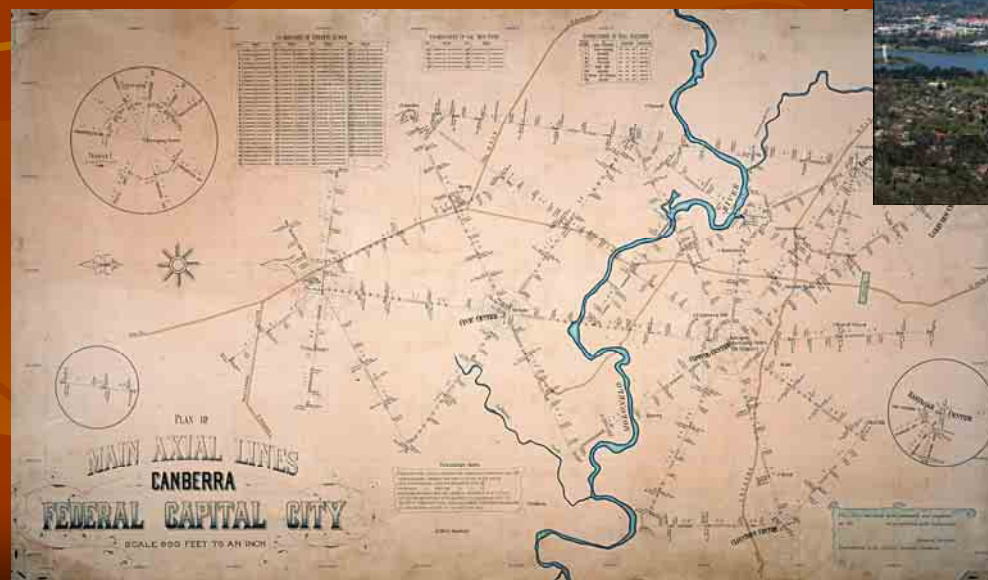




COMMONWEALTH OF AUSTRALIA  
FEDERAL CAPITAL COMPETITION



CITY AND ENVIRONS.

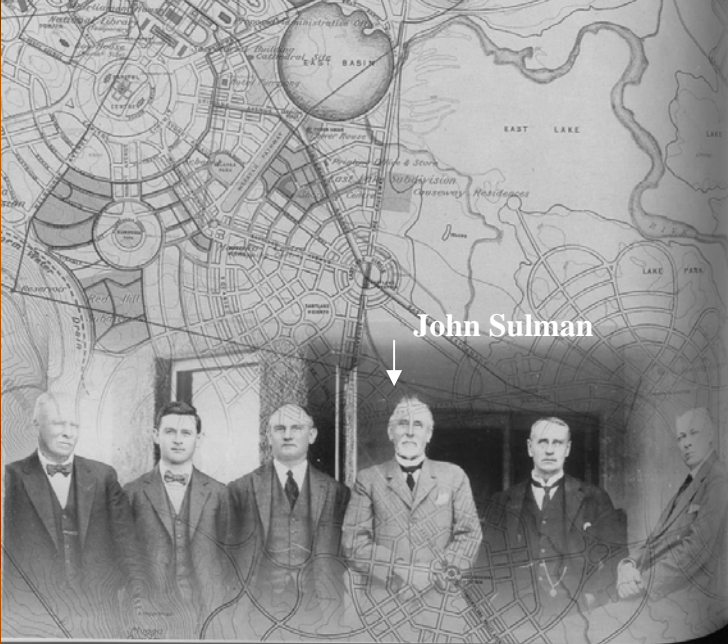


PLAN OF  
MAIN AXIAL LINES  
CANBERRA  
FEDERAL CAPITAL CITY  
SCALE 900 FEET TO AN INCH



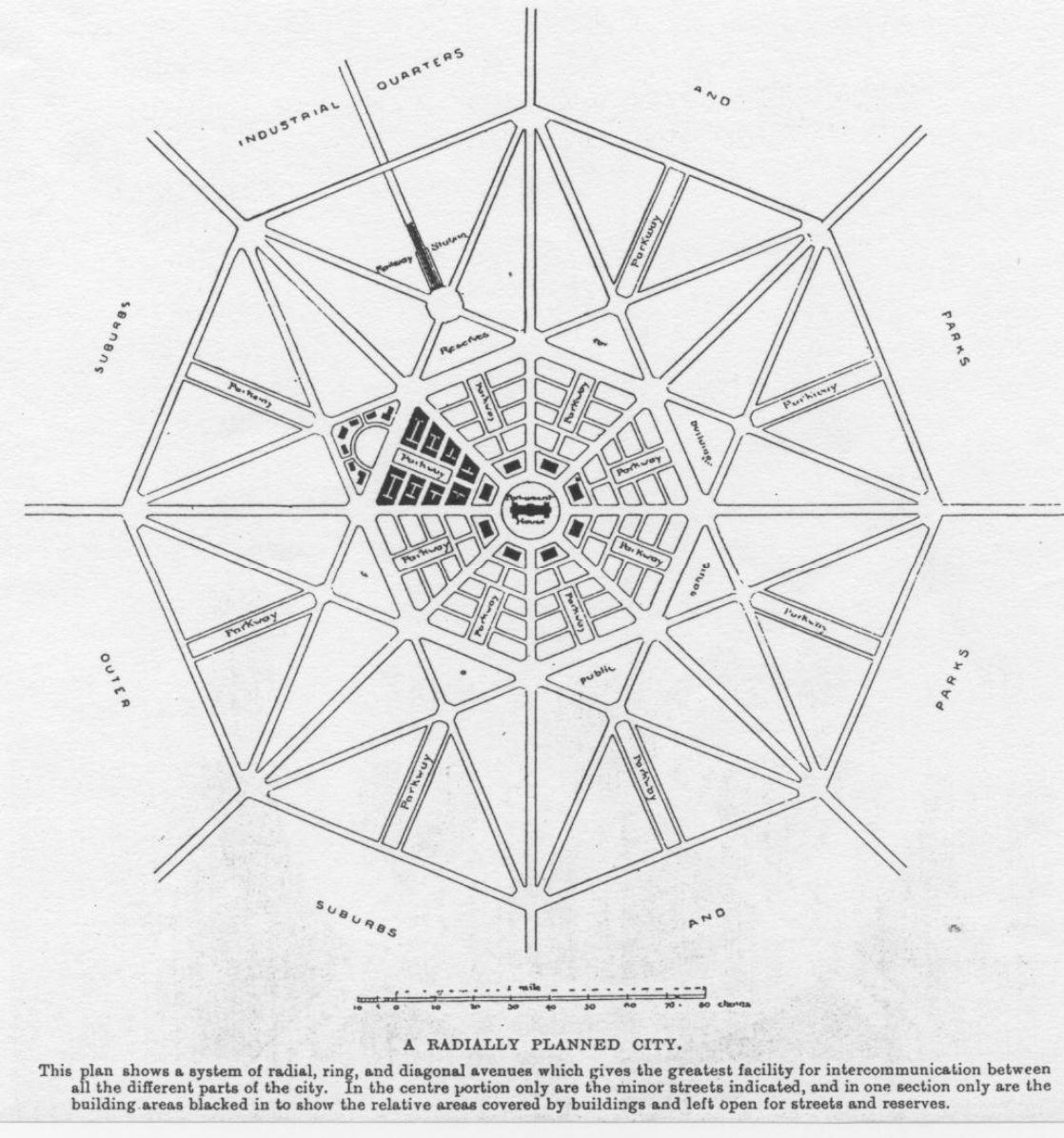






John Sulman

John Sulman with members  
of FCAC



Sulman's 1909 schematic spiderweb plan for a  
Federal Capital

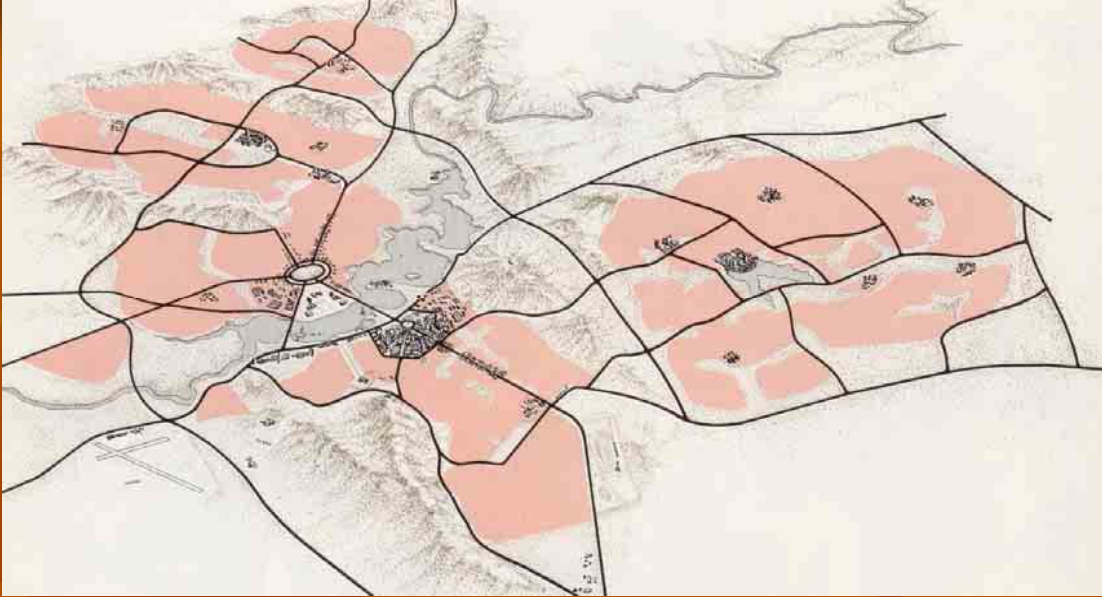






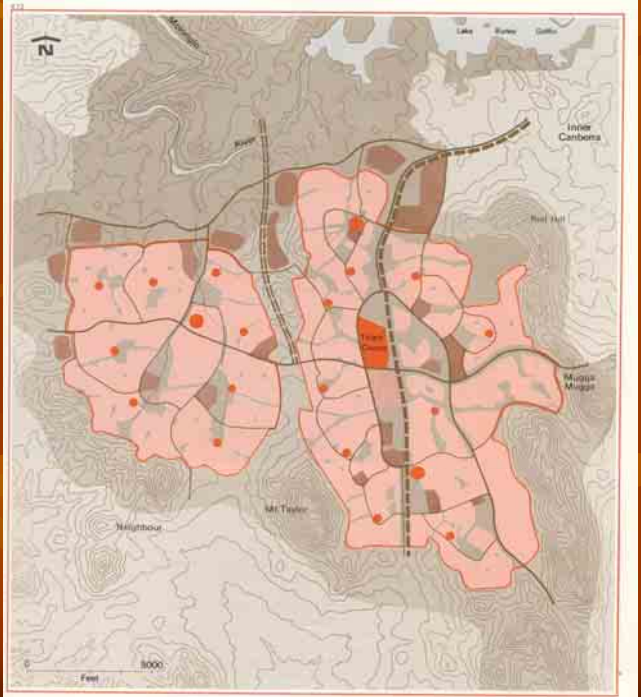


Y-Plan (after Overall)

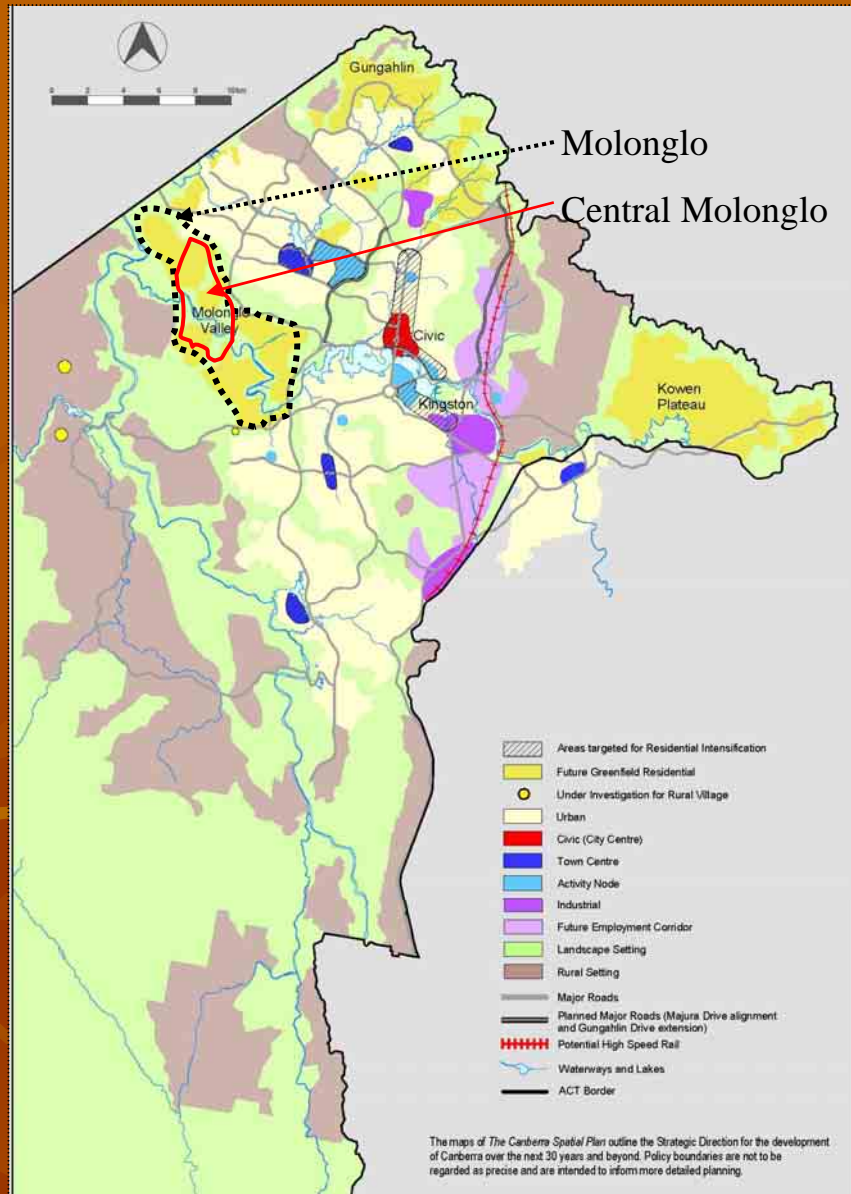


NCDC spatial structure of Canberra showing integration of built-up area with topography and planned open space (*Tomorrow's Canberra*, NCDC)

Woden-Weston Creek (NCDC), *Tomorrow's Canberra*







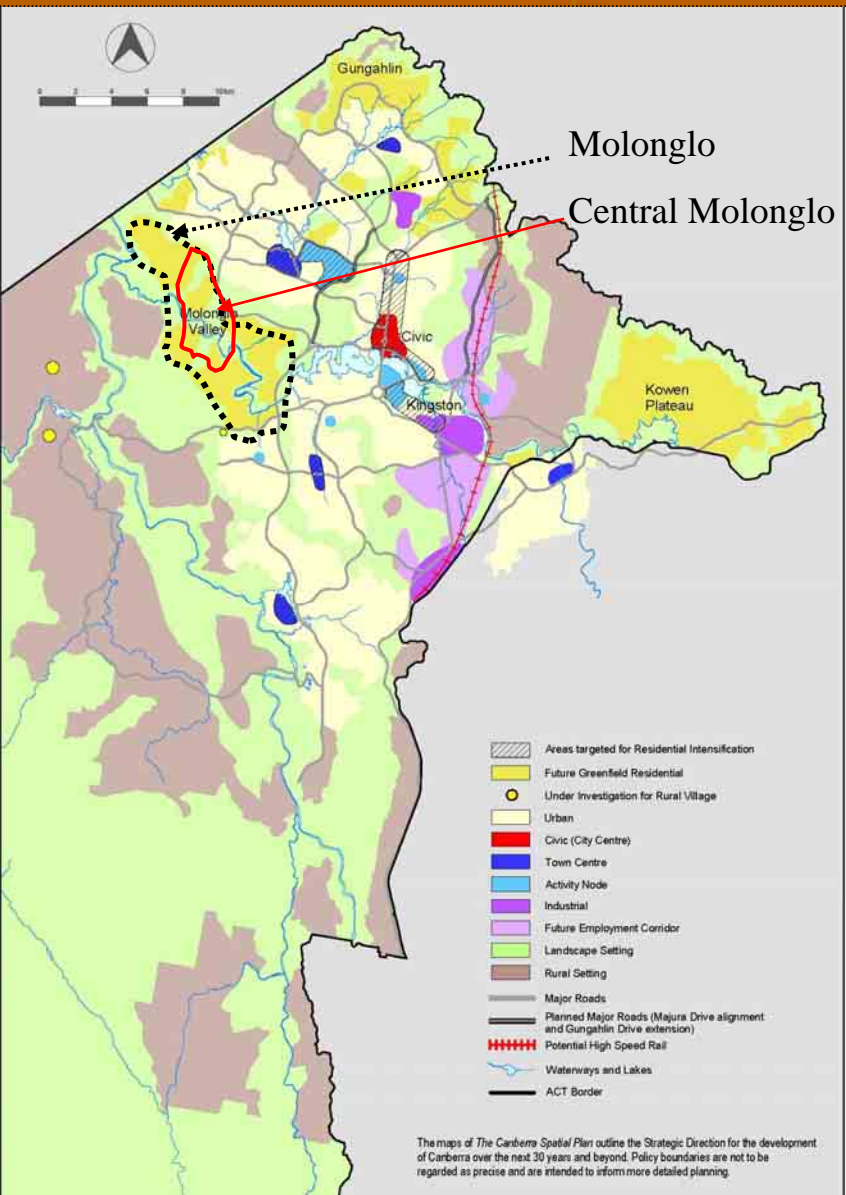












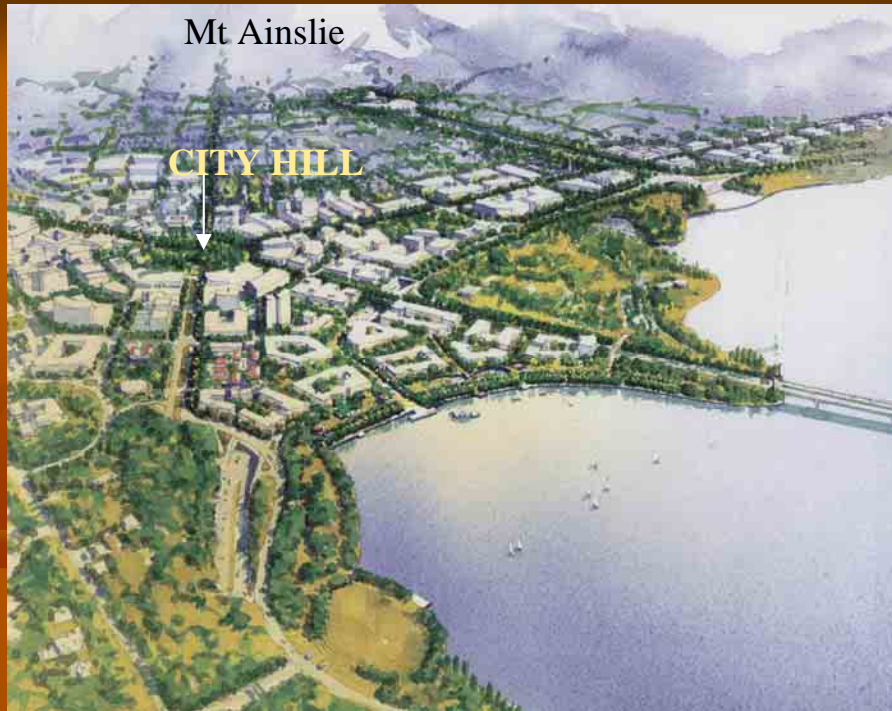
View over proposed Molonglo urban area



View south from Coppins Crossing Road over proposed Molonglo urban area to Weston



Mt Ainslie



Mt Ainslie



City Hill

