



# M24 Out of the depths: Shipwrecks Instil a love for 20<sup>th</sup> Century wartime heritage

**Tim Smith**  
Deputy Director, Heritage Branch  
M24 Project Manager



NSW GOVERNMENT  
Department of Planning

# Freighter *Iron Knight*, Bermagui, NSW



# 1942 The setting



- I- 22 (Ha-21) **Matsuo**
- I-27 (Ha-14) **Chuman**
- I-24 (Ha-?) **Ban**
- I-21 **floatplane carrier**
- 1-29 **floatplane carrier**



# HMAS *Sydney* II (1941)

cgi prepared by Defence, Science & Technology Organisation for Cole Inquiry



Image: Dr Roger Neill (DSTO)



## **M24:** IJN Type A 'Ko Hyoteki' midget submarine, Sydney



**ISSUES: *Not just a shipwreck***

# ISSUES: Commemoration



**Naval ceremony 7 February 2007**

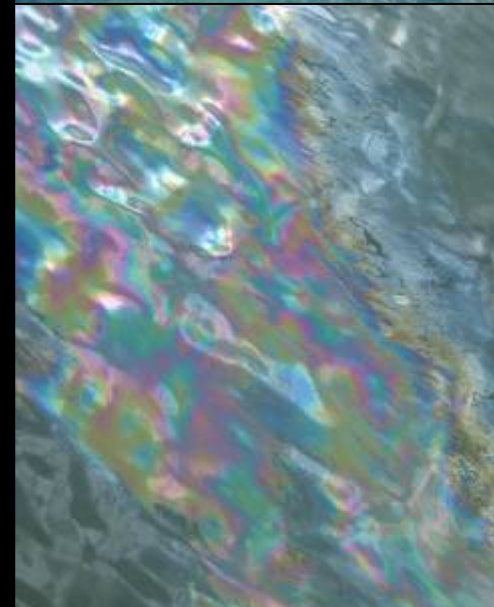
Photo: David Nutley



# WW2 era shipwrecks: The environmental legacy



USS *Arizona*, 1941, Pearl harbour



# Last of the Liberty Ships

## William Dawes 1942



Click on an area of the ship to see a detailed view

### UNEX and Fuel risk



# M24: Issues: legislative protection

1 December 2006

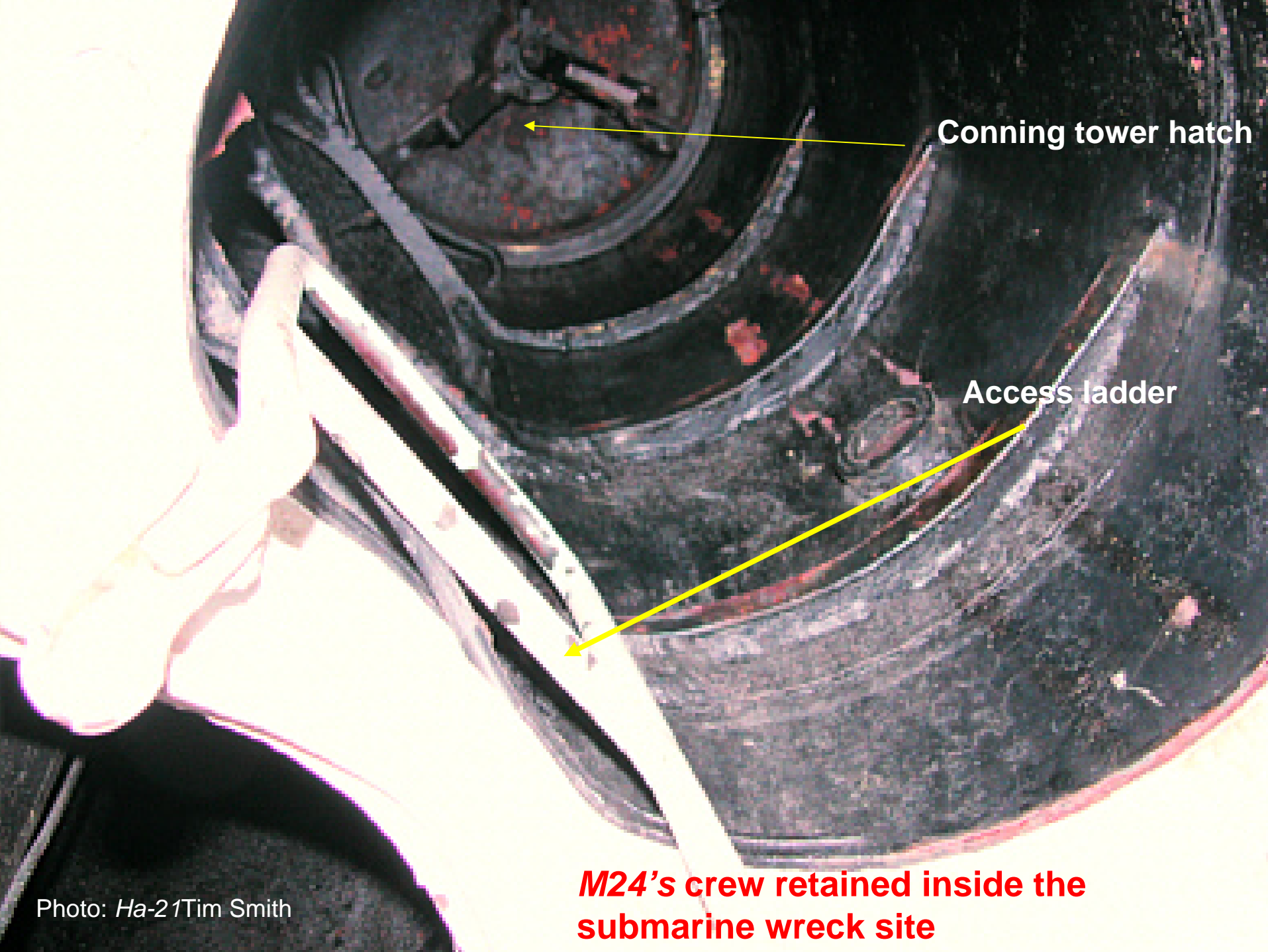


NSW State and Commonwealth Governments move quickly to protect shipwreck site

Interim heritage order *NSW Heritage Act* 1977

*State Heritage Register* listing Dec 2007

Commonwealth *Historic Shipwrecks Act* 1976



Conning tower hatch

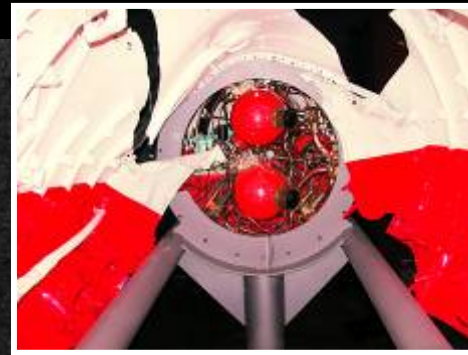
Access ladder

**M24's crew retained inside the submarine wreck site**

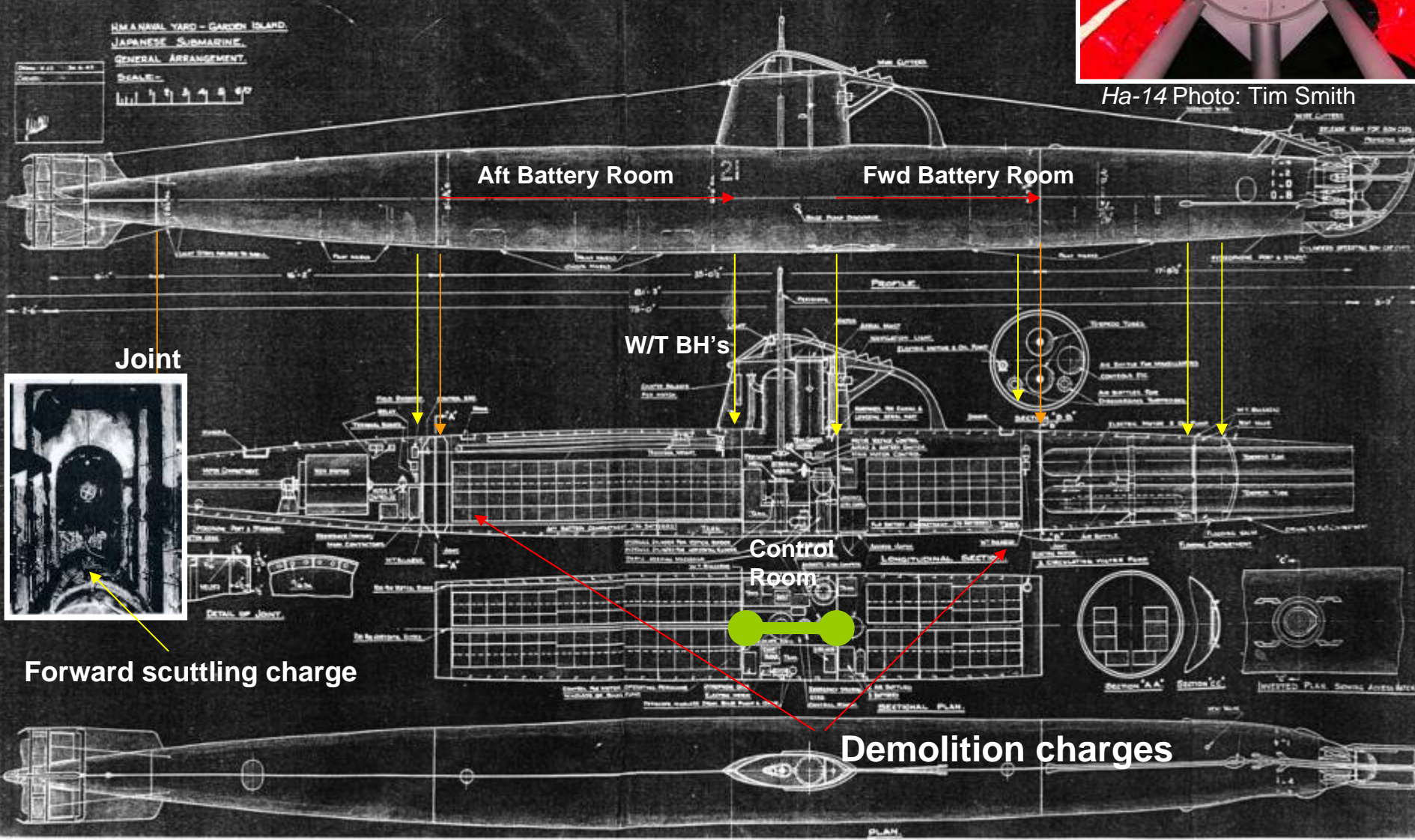
# A Model Gesture



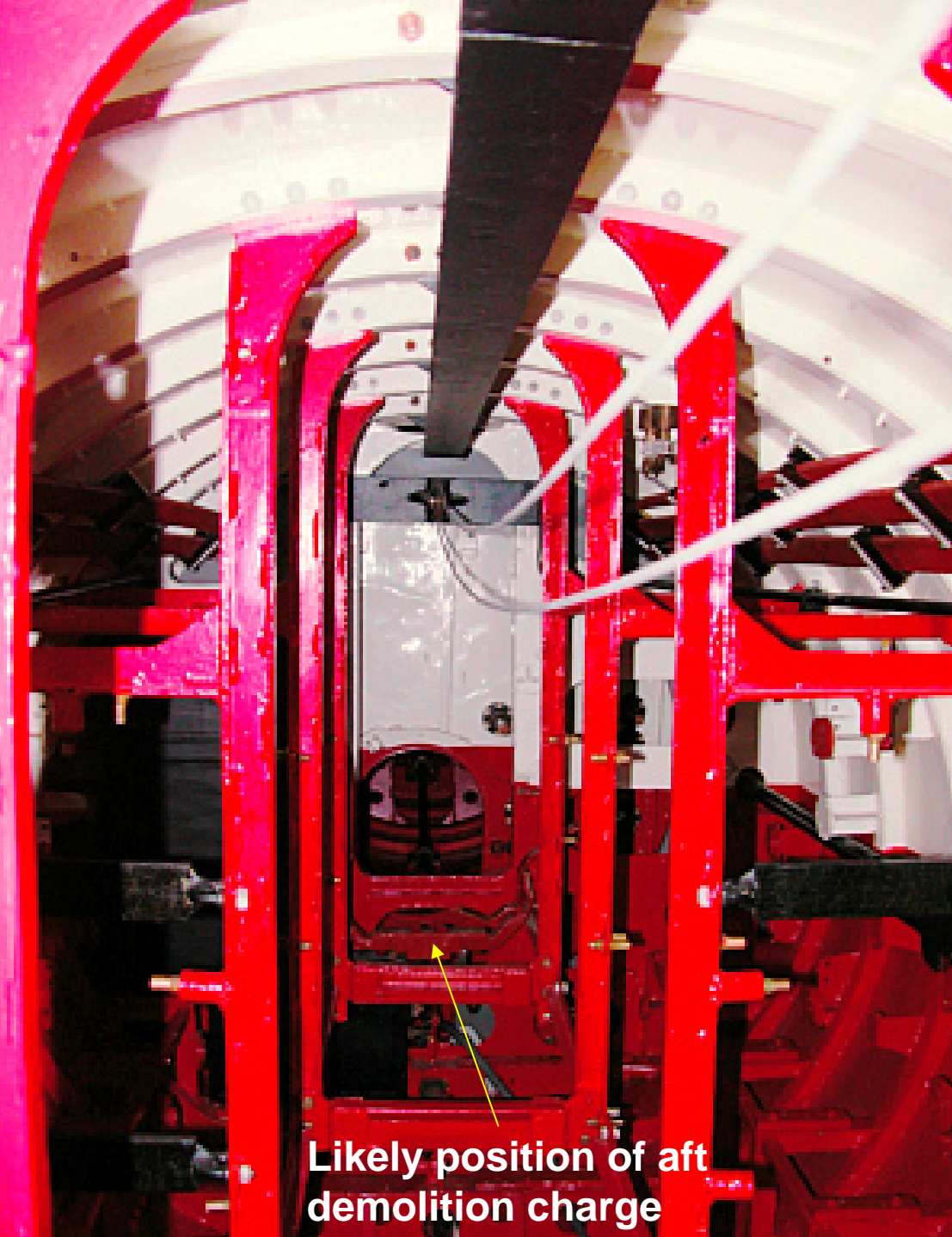
# Issues: Unexploded weapons



Ha-14 Photo: Tim Smith



Forward scuttling charge



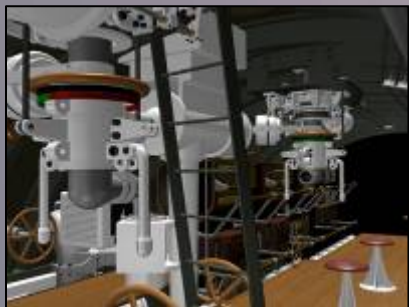
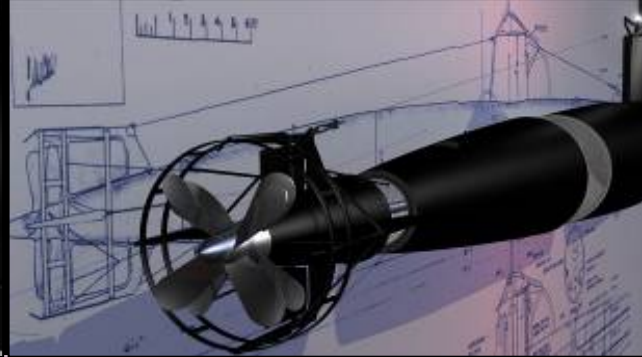
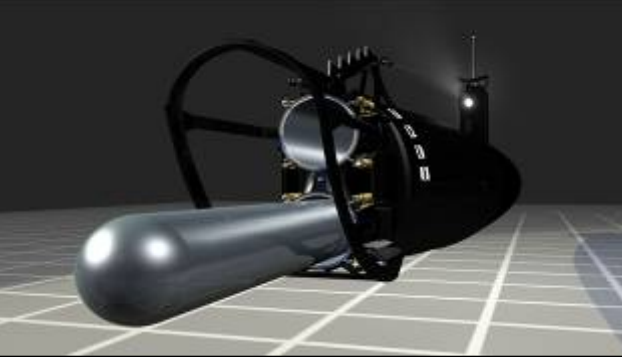
Likely position of aft demolition charge



Roof counter weight visible

Photos: Tim Smith





cgi courtesy: Headland Studios

