

Unloved, over-loved or just misunderstood?

Modern architecture – the problem child of heritage

Philip Goad
Melbourne School of Design
University of Melbourne



Fibro House: Opera House



**Conserving Mid-Twentieth
Century Heritage**





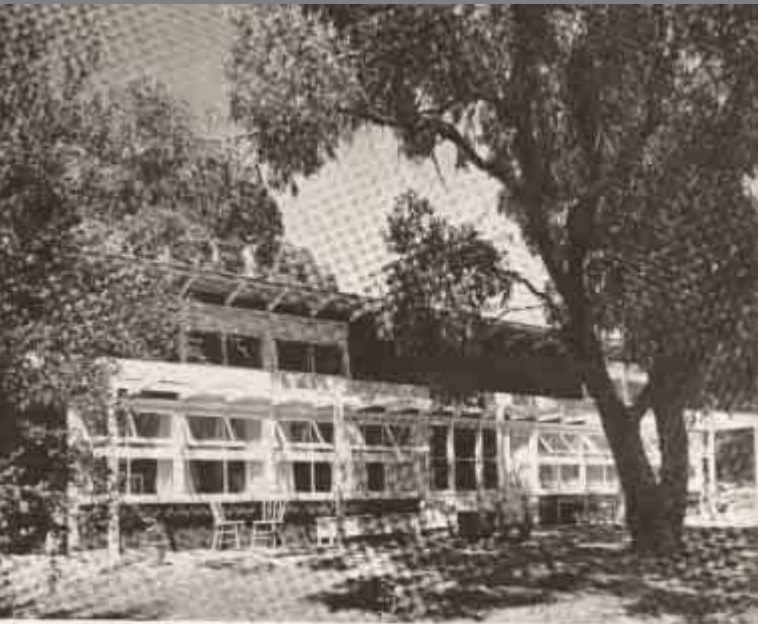






www.austadiums.com





Melbourne: architect, Roy Grounds

Robin Boyd

A NEW ECLECTICISM?

On the opposite page are two pictures, as different as night from day, having little more in common than the photographer's viewpoint of his subject—slightly left of centre.

Although the subjects are in Australia and have some minor regional characteristics, they will be recognized instantly in any part of the world as belonging respectively to the two main opposing sides in the international Battle (II) of the Styles. Each building represents one fork of the crossroads at which twentieth century architecture, half-grown, stands today in such obvious hesitation. Greater architectural contrast could hardly be found within the narrow field of building in which both structures may be classed. A more concise illustration of the divergence of their respective schools of thought is seldom offered in practice. For the buildings are similar in size and type and were built recently under similar social and geographical conditions. The contrast is the result of nothing but the difference in artistic approach.



- 1 the difficult type
- 2 the difficult idiom
- 3 the difficult comparison
- 4 the difficult house

- 1 the difficult type
- 2 the difficult idiom
- 3 the difficult comparison
- 4 the difficult house











National Library of Australia

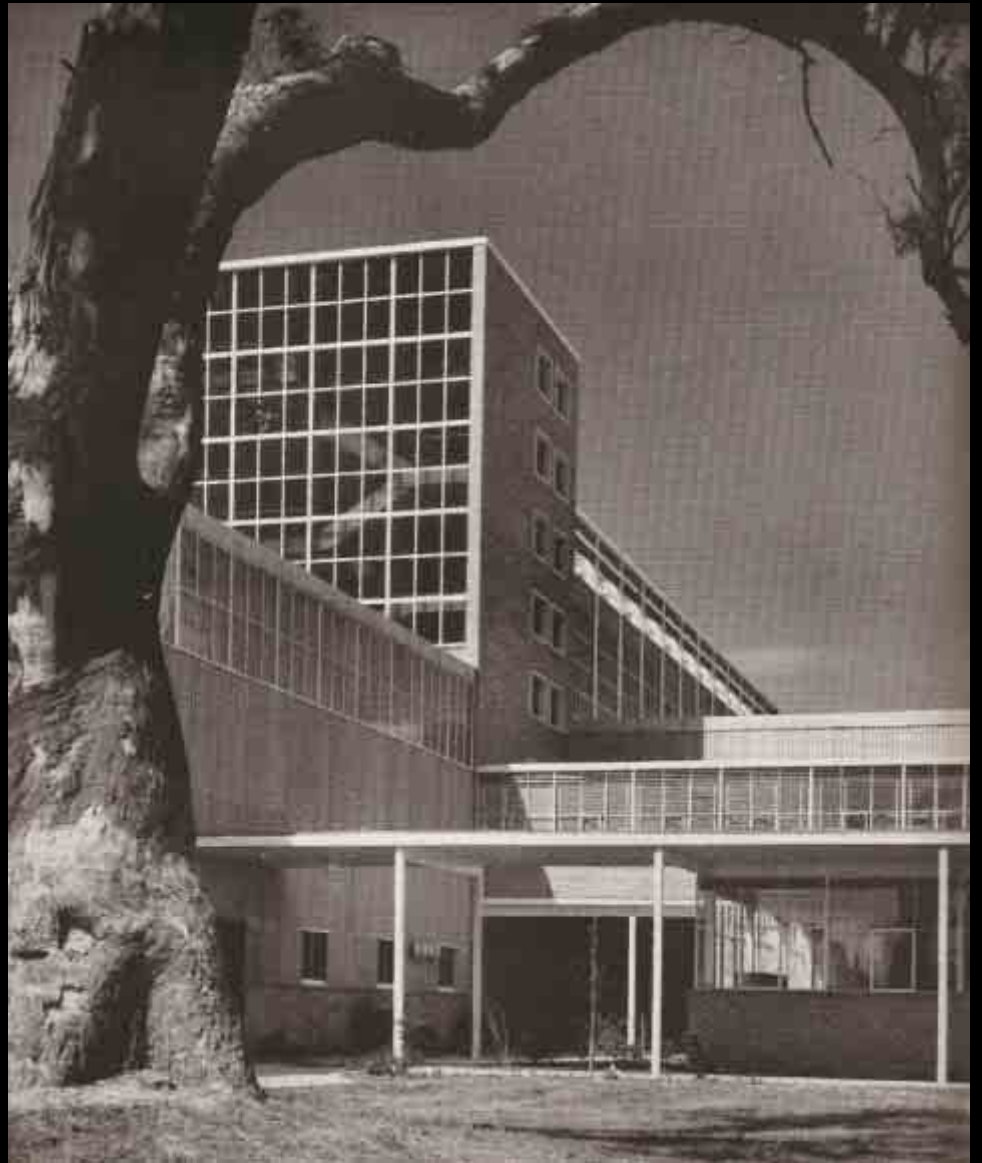
nla.pic-an13984657-3-v





National Library of Australia

nla.pic-vn4494337-y





Prince Henry's Hospital, St. Kilda Road, Melbourne



National Library of Australia

nla.pic-an13459476-1-v



National Library of Australia

nla.pic-an13459476-9-v



National Library of Australia

nla.pic-an13459476-23-v











[What will happen to Charity Hospital and other endangered projects?]

A fresh look at the
state of Historic
Preservation

BY ROBERT IVY, FAIA

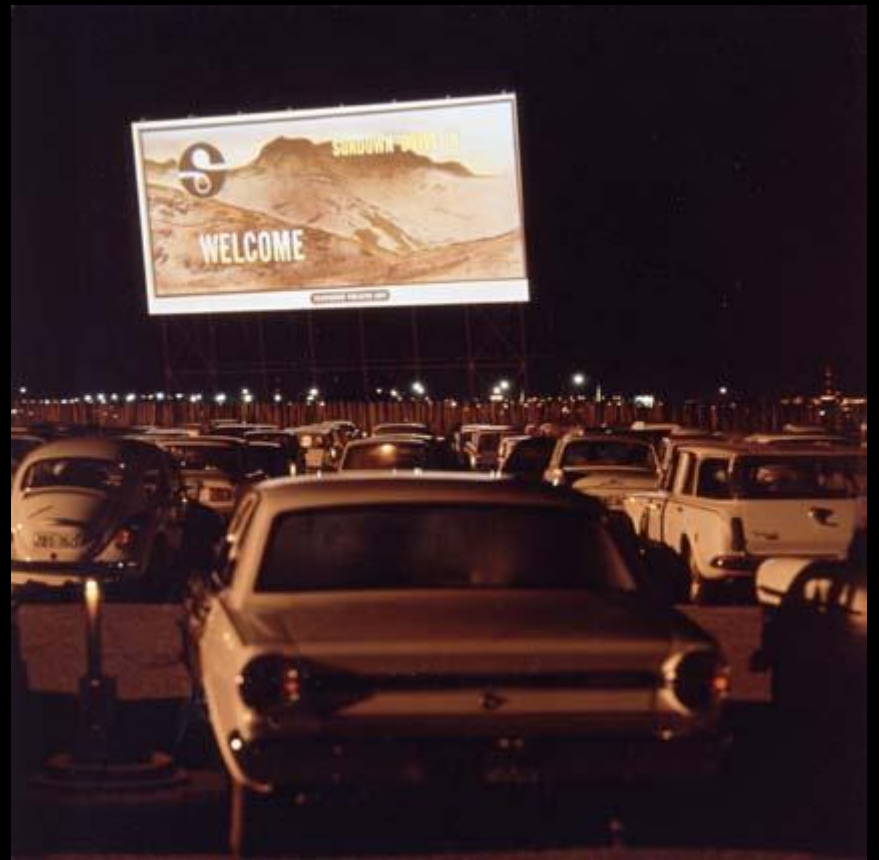
After decades of gaining strength as a movement, the battle lines have been drawn again, with a significant structure in peril. The Medical Center of Louisiana at New Orleans, popularly known as Charity Hospital, a looming Art Moderne presence in the Deep South, battered by Hurricane Katrina but apparently structurally intact, now faces a more insidious foe—abandonment—together with the demolition of more than 130 structures in a nearby neighborhood currently listed on the National Register of Historic Places. But not without a fight.

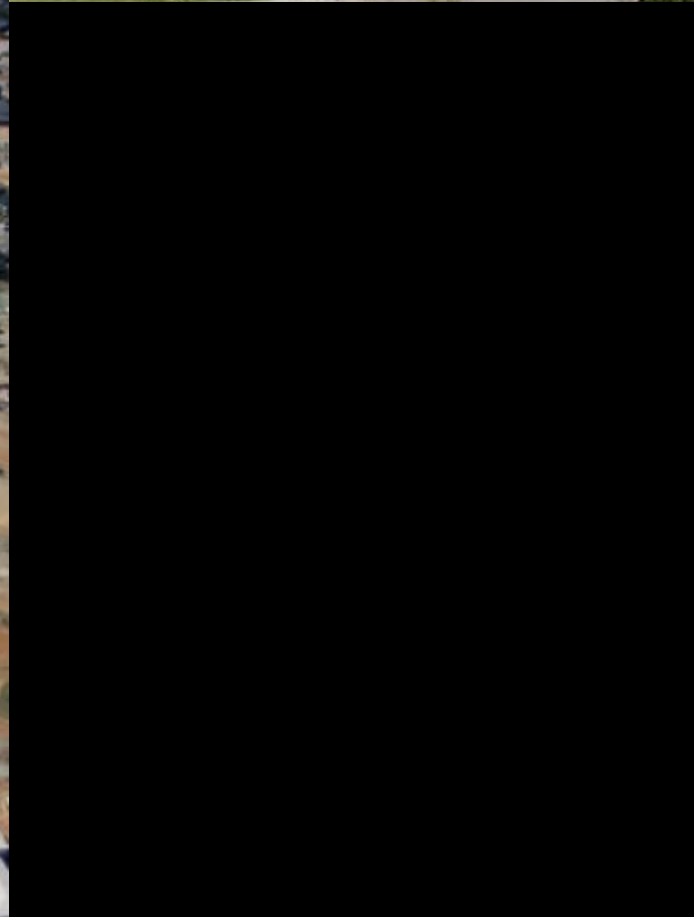
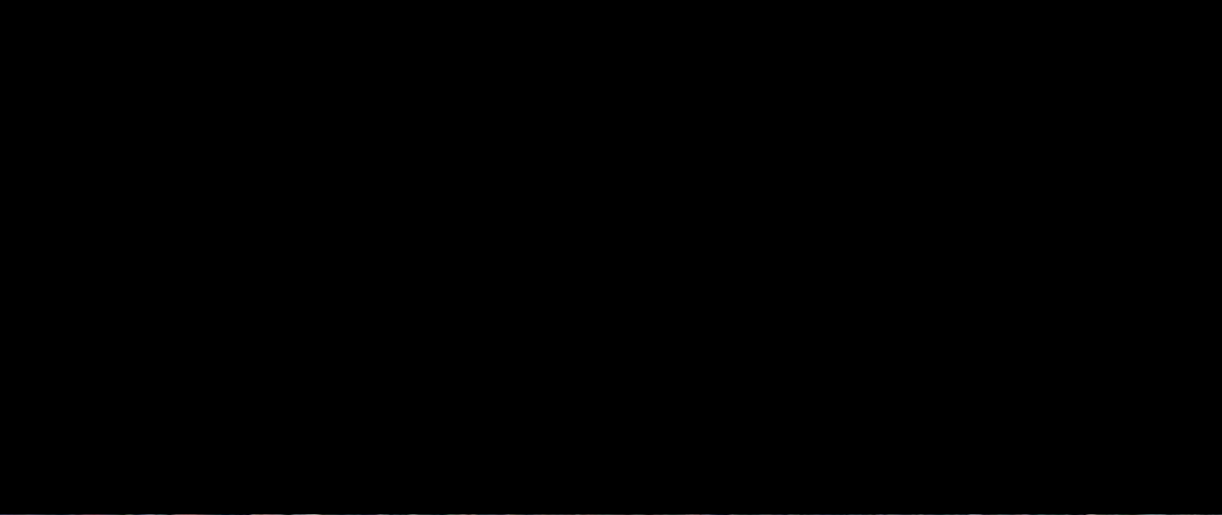
The contemporary drama pits big money (\$2 billion in much-needed investment for New Orleans to become a 21st-century medical Mecca) and power (the Veterans Administration and the Louisiana Office of Facility Planning and Control) against a hard-hit community, organizing and finding its voice after the hurricane, asking to be heard. No one denies that the city needs the capital investment, or that a medical campus would benefit the larger city and state economy. As in many preservation arguments, however, the value and

PHOTOGRAPH BY WAGNER HUBER



State Library of Western Australia





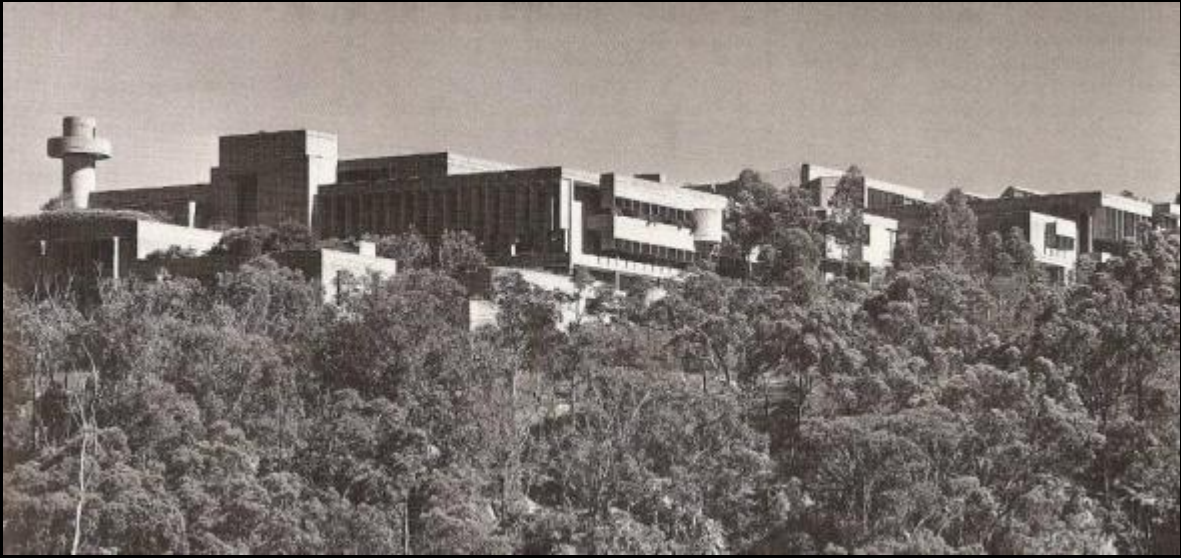


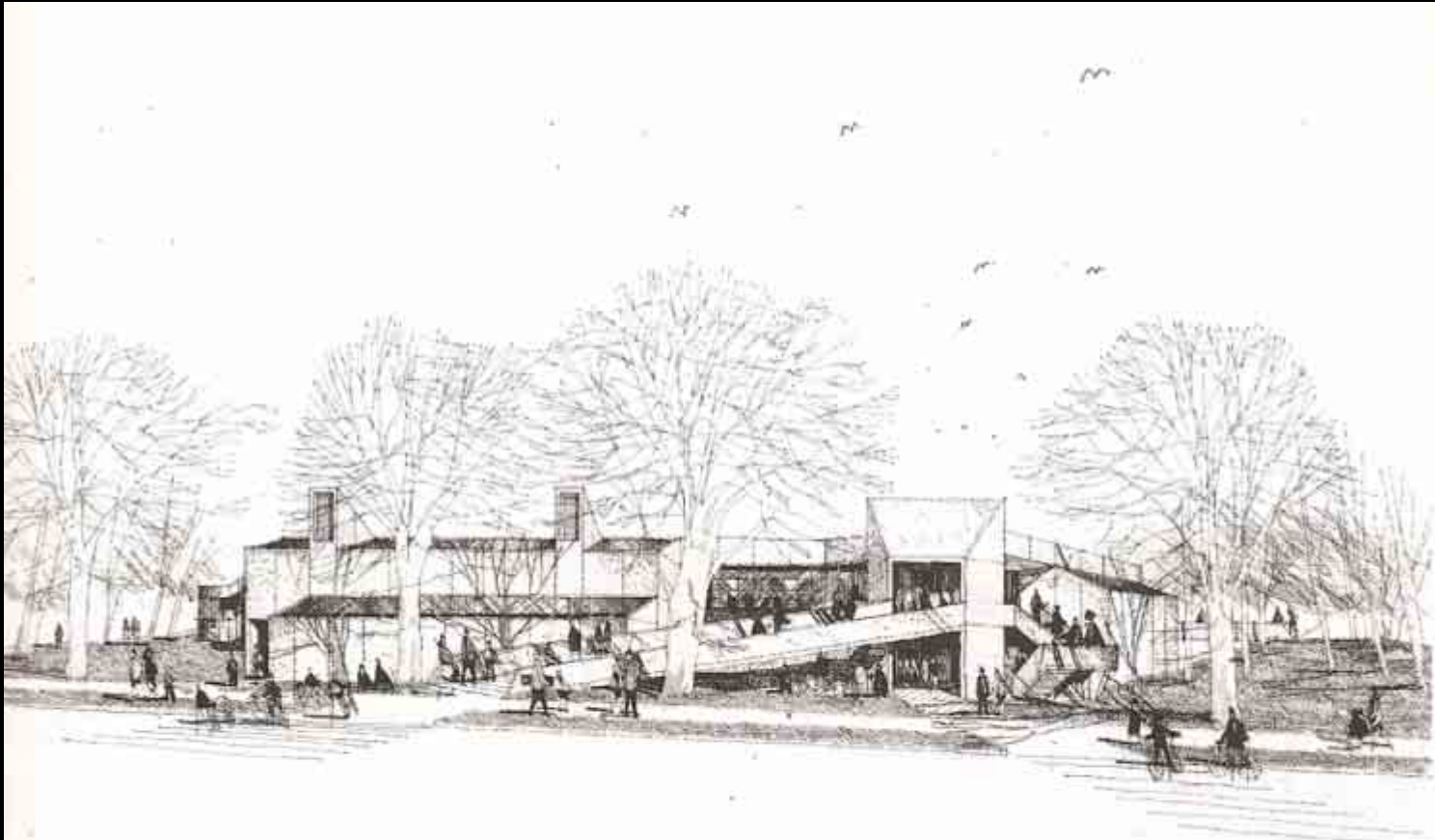




- 1 the difficult type
- 2 the difficult idiom
- 3 the difficult comparison
- 4 the difficult house







MALVERN POOL
ROYAL HOLLAND, ARCHTCT
35 WOODS, WIMBORNE, EAST MIDDLESEX







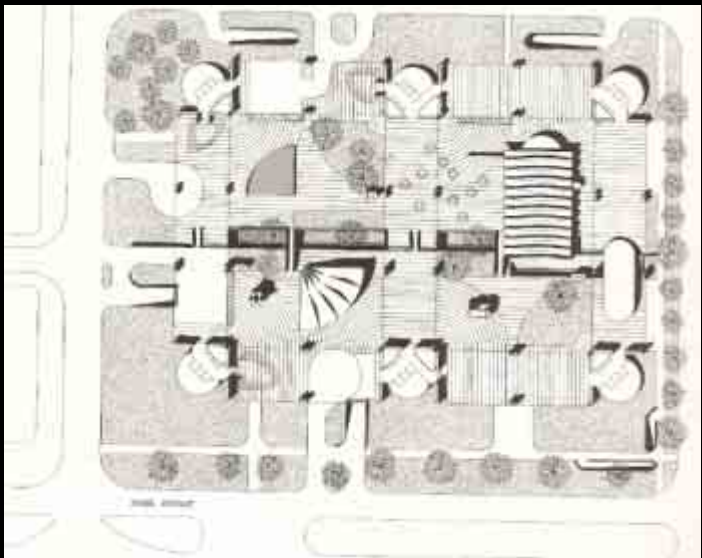
Norman Day railed in today's paper against proposed alterations to the Harold Holt Memorial Swimming Pool by Peddle Thorp architects, accusing it of gimmickry and arrogance. "The very qualities that make the Harold Holt pool a significant building are to be subsumed into a comfortable and relaxed architecture of mediocrity."

The Mayor of Stonnington said in July that, "the redevelopment plans take into account the historical significance of the site, the style of the existing buildings and the local area. We particularly want to retain the unique character, friendly environment and its reputation as the pool in the park."

(Source:

<http://www.butterpaper.com/vanilla/comments.php?DiscussionID=803>, 5

Dec 2006)

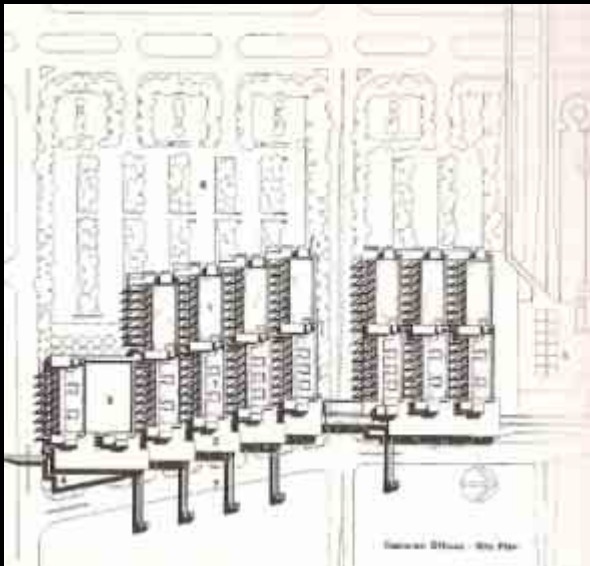


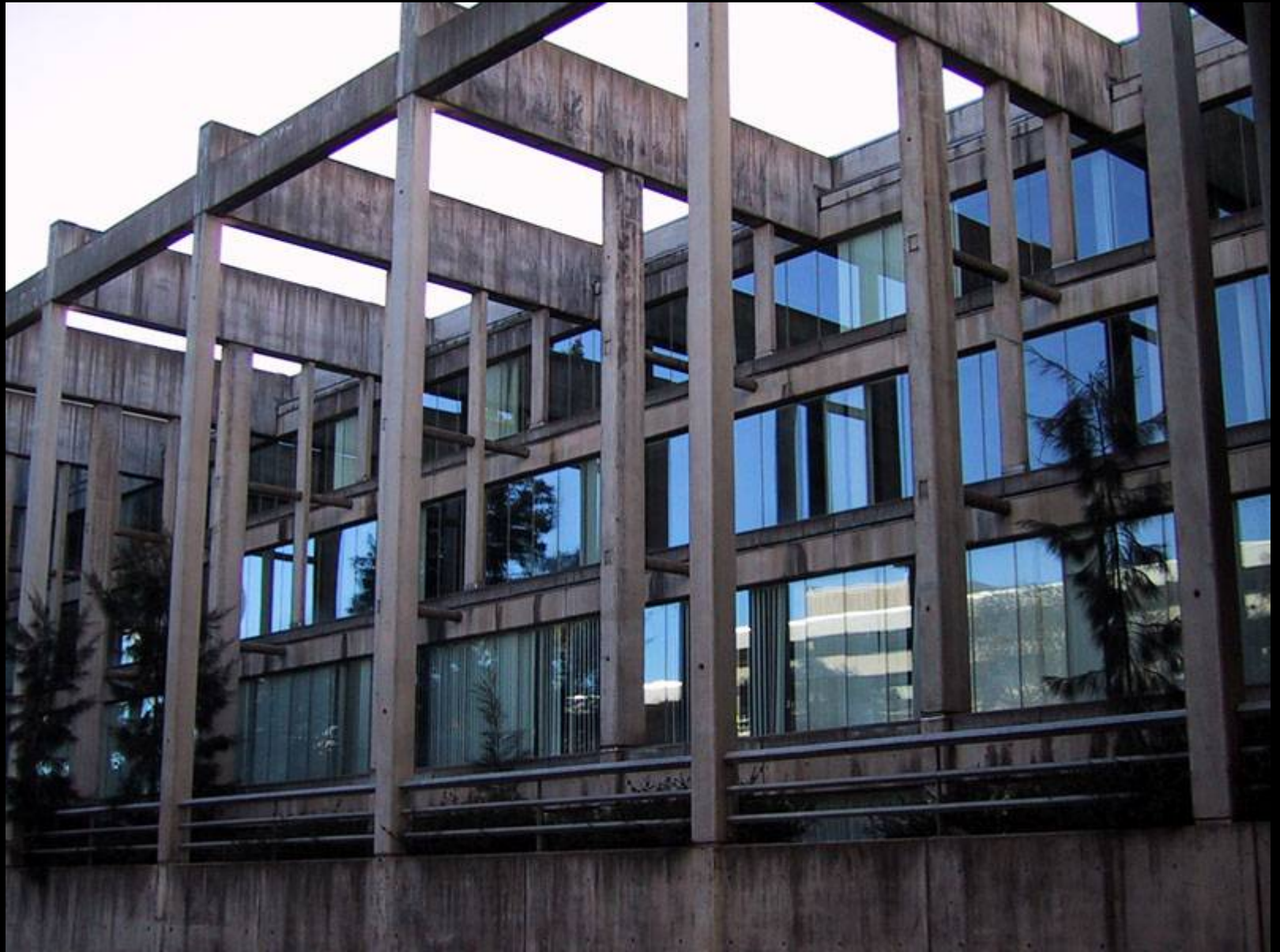




National Library of Australia

nla pic-an22773702-v

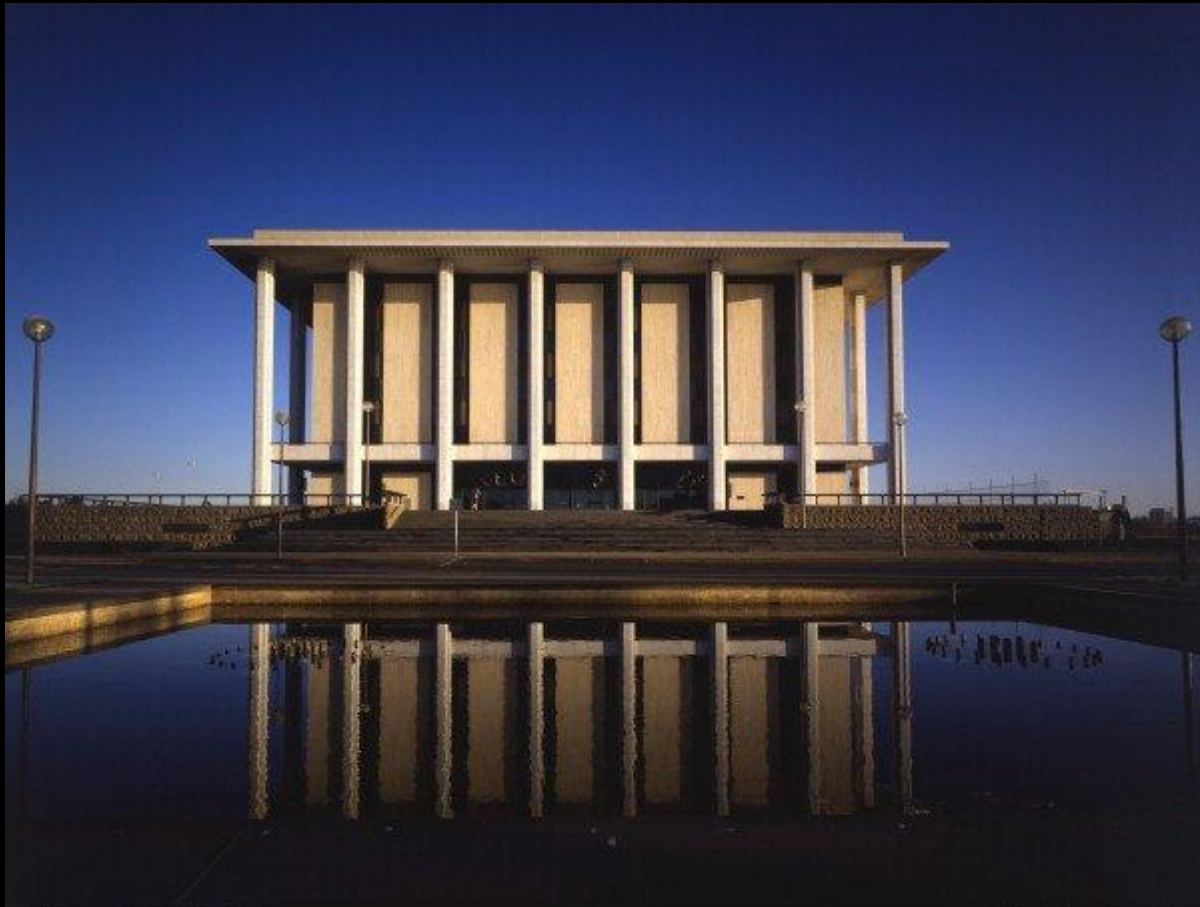






(c) Northern Territory Library

hdl:10070/13839



National Library of Australia

nla.int-nl39436-ls87-v













Packer's \$18m digs set for demolition



Golden arches ... the Guilford Bell-designed Vacluse mansion.

Jonathan Chancellor Property Editor

June 20, 2009

The billionaire James Packer and his wife, Erica, are understood to have spent \$18 million on their first family property. But neighbours do not expect them to be moving in until they demolish and rebuild the hillside Vacluse holding.

Brisbane Courier Mail, 20 June 2009

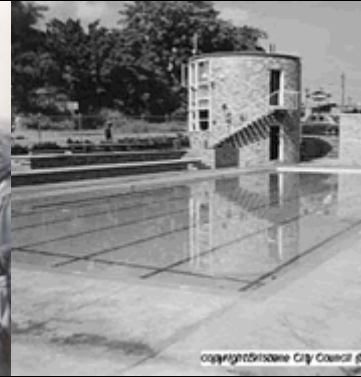
- 1 the difficult type
- 2 the difficult idiom
- 3 the difficult comparison
- 4 the difficult house

Book:

Hannah Lewi, David Nichols (eds), *community: building everyday modernism for Australia*, UNSW Press, Sydney, 2010.

Contributing authors: Hannah Lewi, David Nichols, Kate Darian-Smith,
Julie Willis and Philip Goad

community



copyright© Brisbane City Council









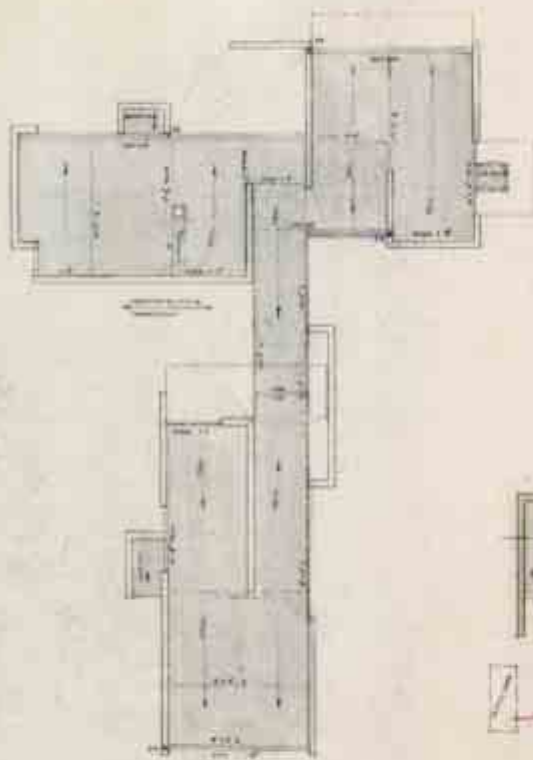








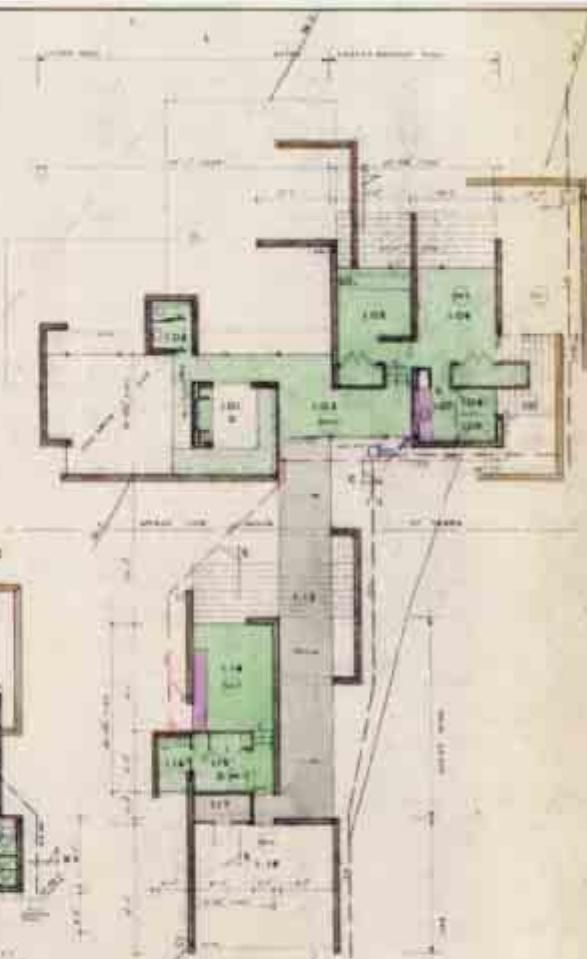
- 1 the difficult type
- 2 the difficult idiom
- 3 the difficult comparison
- 4 the difficult house



ROOF PLAN



LOWER LEVEL



MAIN LEVEL PLAN



- MATERIALS**
- THE FAB. FURNITURE
 - BRICKS - FINISH
 - GLEN'S FLOORING
 - TERRAZO TILES
 - LIMESTONE

- SIZE OF DETAIL**
- 12 EXPANSION JOINT
 - 18. DRAIN AGRICULTURAL
 - 24. DRAIN SEWERAGE
 - 30. DRAIN STORMWATER

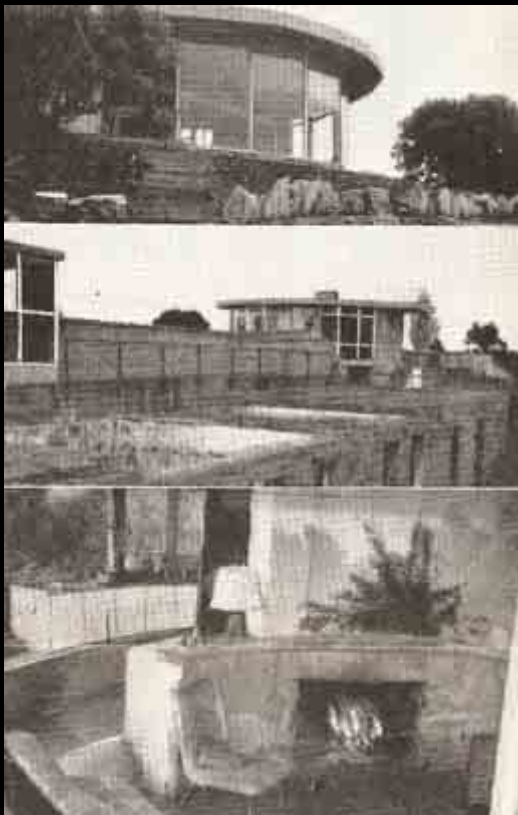
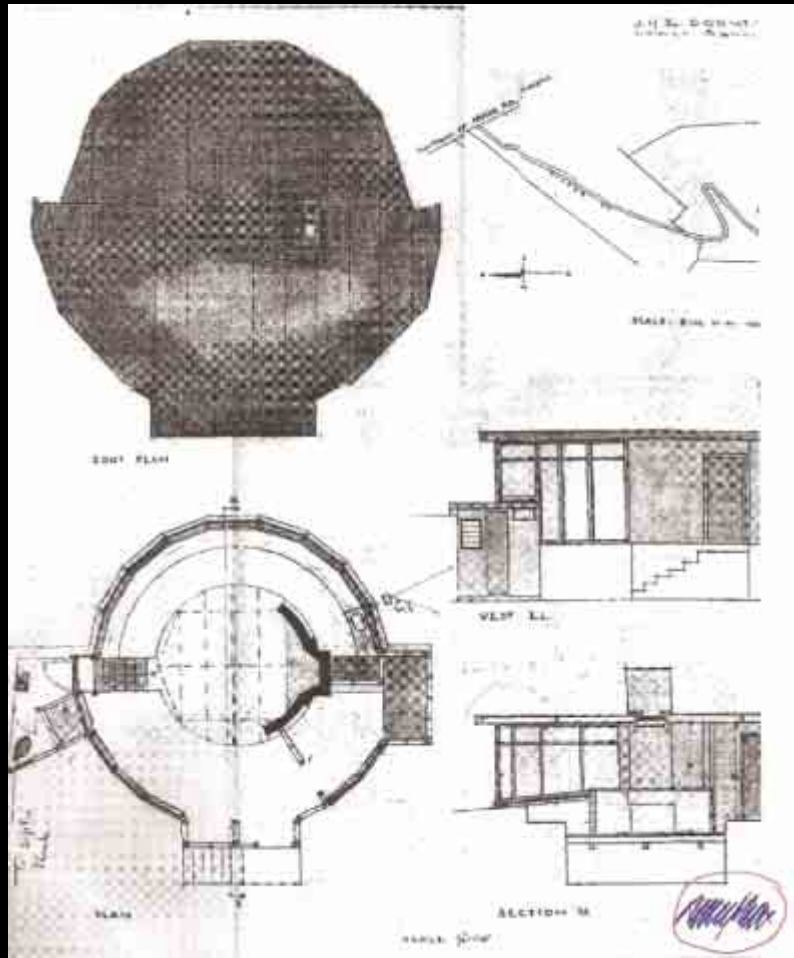
**HOUSE AT WEIDE BULLEN
FOR MR. AND MRS. JOHN REED**

MCCLELLAN AND EVERETT ARCHITECTS
MELBOURNE AND COLLING

WORKING DRAWING
PLANS
SCALE 1/4" = 1 FOOT

SHEET NO 1







INSITES

THE MAGAZINE OF THE HISTORIC HOUSES TRUST WINTER 09

**(OVER)LOVED MODERN?
CONSERVING ROSE SEIDLER HOUSE**









- Some kind of understanding....



**CINEMAS
OF
AUSTRALIA
VIA USA**

Leslie Thorne Architecture Department: University of Sydney



CAROLINE BUTLER-BOWDON AND CHARLES PICKETT



HOMES

APARTMENT LIVING IN AUSTRALIA **IN THE SKY**

MODERN TIMES

THE UNTOLD STORY OF MODERNISM IN AUSTRALIA



Master Domes: The Untold Story of Modernism in Australia reveals how modernism transformed all aspects of Australian culture across five continents. Founded from 1917 to 1947, The Museum of Modernism was an early and influential, and increasingly iconic, as it became an art, advertising, photography, film, animation, fashion and architecture.

Master Domes traces how modernism transformed us as a nation as a radicalized technology in every way. It reveals the role of design and vegetables in founding the international world-grade experience, as well as the fashion.

Wally Bygrave and **Ann Stephen** are leading authorities on the modernism movement, illustrating of key modernism figures such as Ludwig Mies van der Rohe, Frank Lloyd Wright and Hans Hollein, Robert Rauschenberg, Robert Rauschenberg, Robert Rauschenberg, Robert Rauschenberg and more than 1000 images.

This is the first time that such diverse material has been brought together in one volume. Building the way in which modernism transformed Australia culture and ideas in the twentieth century.

Ann Stephen is a leading authority on the modernism movement, illustrating of key modernism figures such as Ludwig Mies van der Rohe, Frank Lloyd Wright and Hans Hollein, Robert Rauschenberg, Robert Rauschenberg, Robert Rauschenberg, Robert Rauschenberg and more than 1000 images.

This is the first time that such diverse material has been brought together in one volume. Building the way in which modernism transformed Australia culture and ideas in the twentieth century.



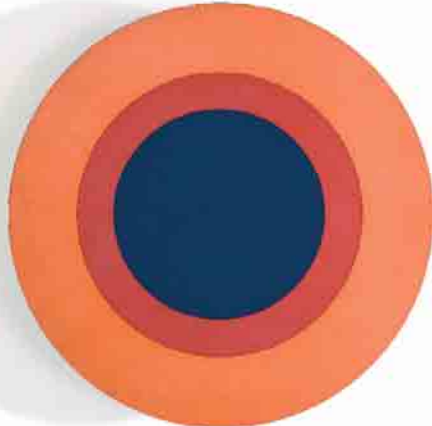
Stephen (1917-2010) was the author, editor and publisher of *Australian Modernism*, a leading authority on the modernism movement, illustrating of key modernism figures such as Ludwig Mies van der Rohe, Frank Lloyd Wright and Hans Hollein, Robert Rauschenberg, Robert Rauschenberg, Robert Rauschenberg, Robert Rauschenberg and more than 1000 images.

Ann Stephen is a leading authority on the modernism movement, illustrating of key modernism figures such as Ludwig Mies van der Rohe, Frank Lloyd Wright and Hans Hollein, Robert Rauschenberg, Robert Rauschenberg, Robert Rauschenberg, Robert Rauschenberg and more than 1000 images.

Ann Stephen is a leading authority on the modernism movement, illustrating of key modernism figures such as Ludwig Mies van der Rohe, Frank Lloyd Wright and Hans Hollein, Robert Rauschenberg, Robert Rauschenberg, Robert Rauschenberg, Robert Rauschenberg and more than 1000 images.

The book reveals how modernism transformed all aspects of Australian culture across five continents. Founded from 1917 to 1947, The Museum of Modernism was an early and influential, and increasingly iconic, as it became an art, advertising, photography, film, animation, fashion and architecture.

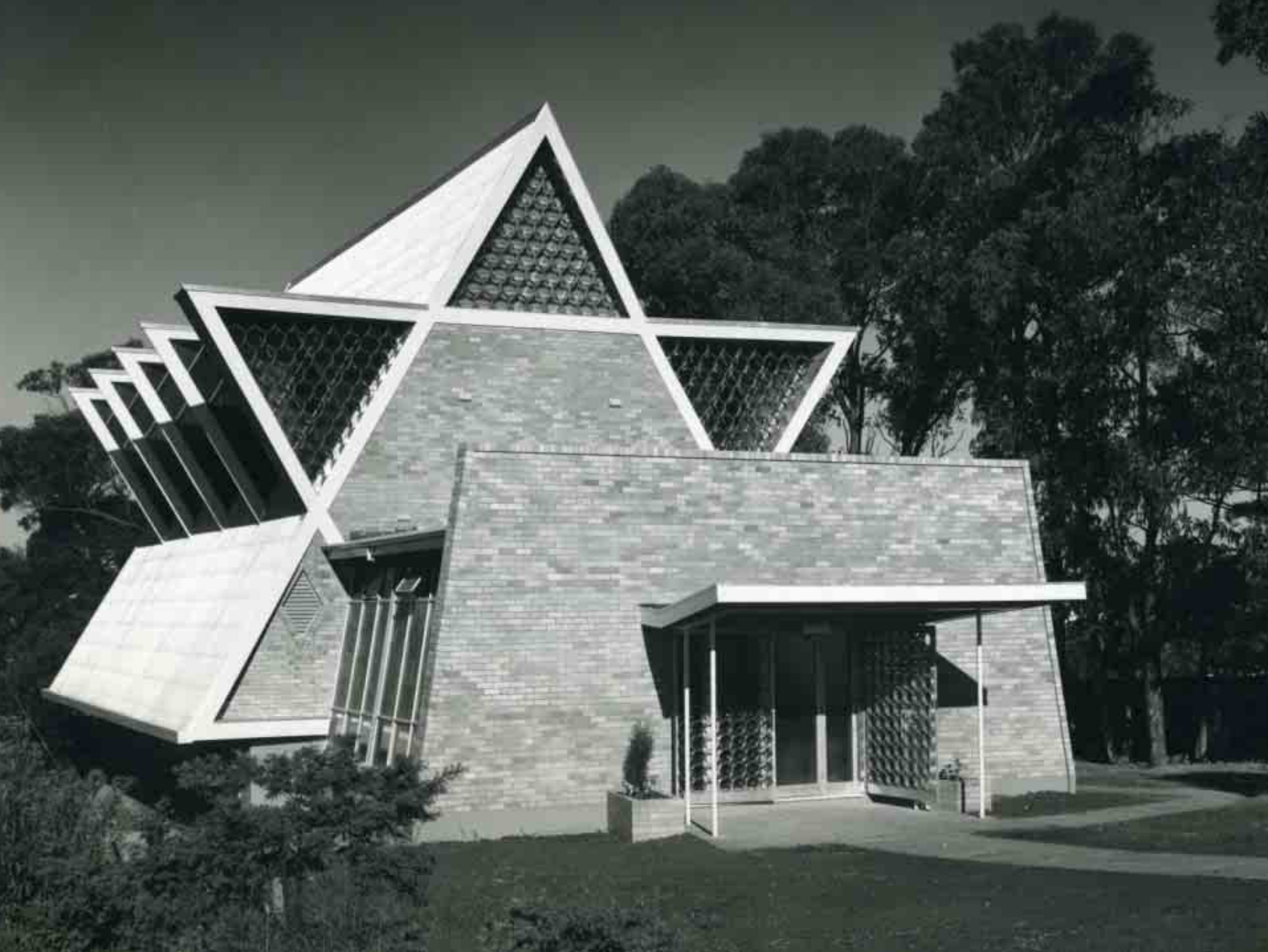
MODERN TIMES
THE UNTOLD STORY OF MODERNISM IN AUSTRALIA

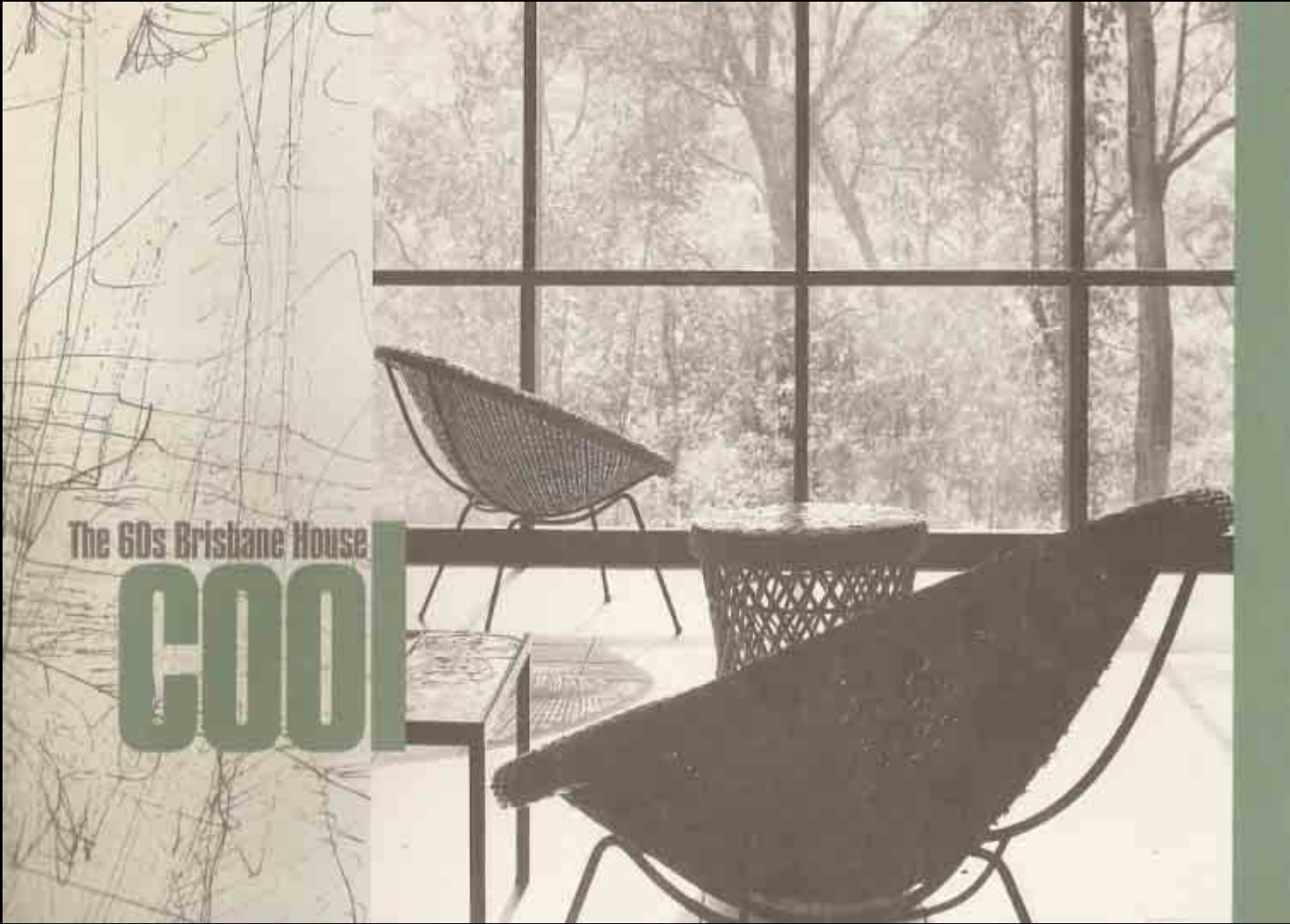


EDITED BY ANN STEPHEN, PHILIP GOAD AND ANDREW M. HAMARA



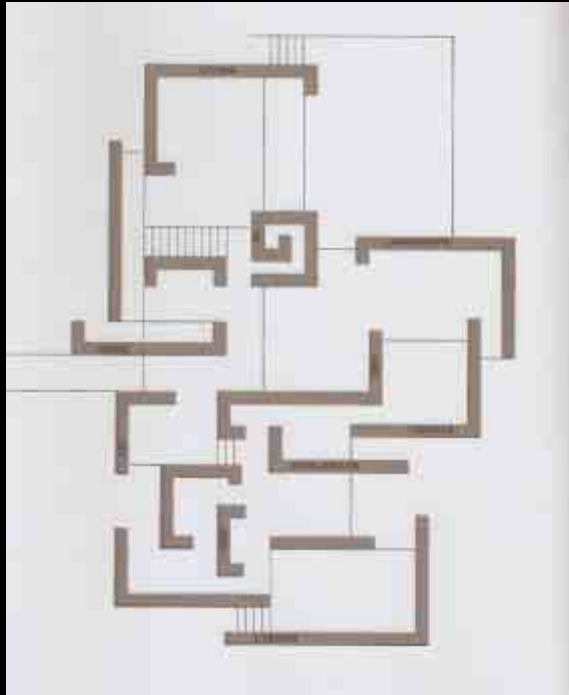
THE MUSEUM OF MODERNISM
100 Years of Modernism in Australia





The 60s Brisbane House

COOL



Christ College

University of Tasmania, Sandy Bay, 1961-2



Long Beach Bathing Pavilion

Sandy Bay, Tasmania, 1964



Burgmann College

Australian National University, ACT, 1965-71

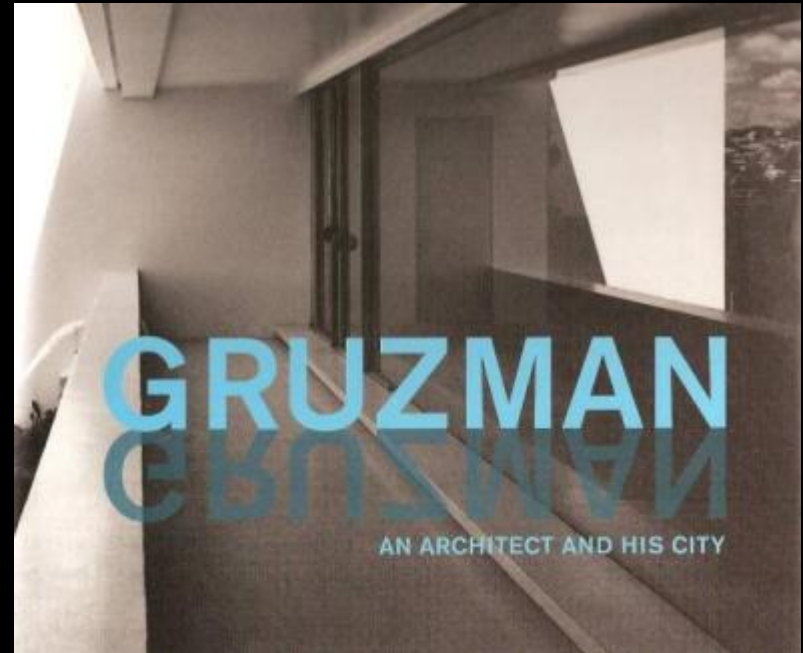
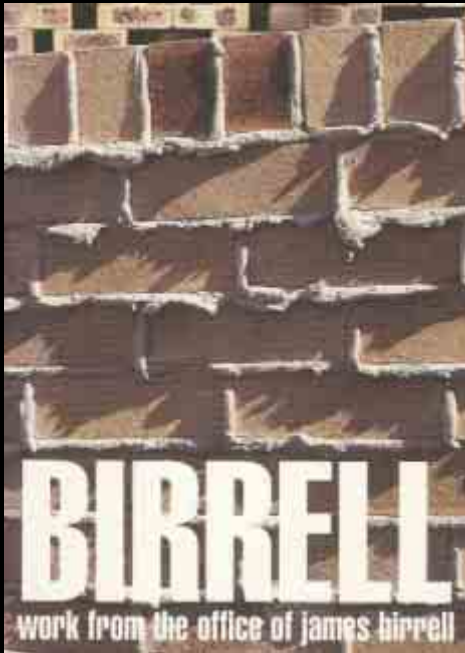
Dirk Bolt (1930-)





National Library of Australia

nla.pic-vn4317941-s3-v







twentieth century

HERITAGE

marking the recent past

20th

EDITED BY FRAN STROPIN AND SUSAN MARSDEN

do-co-mo.mo

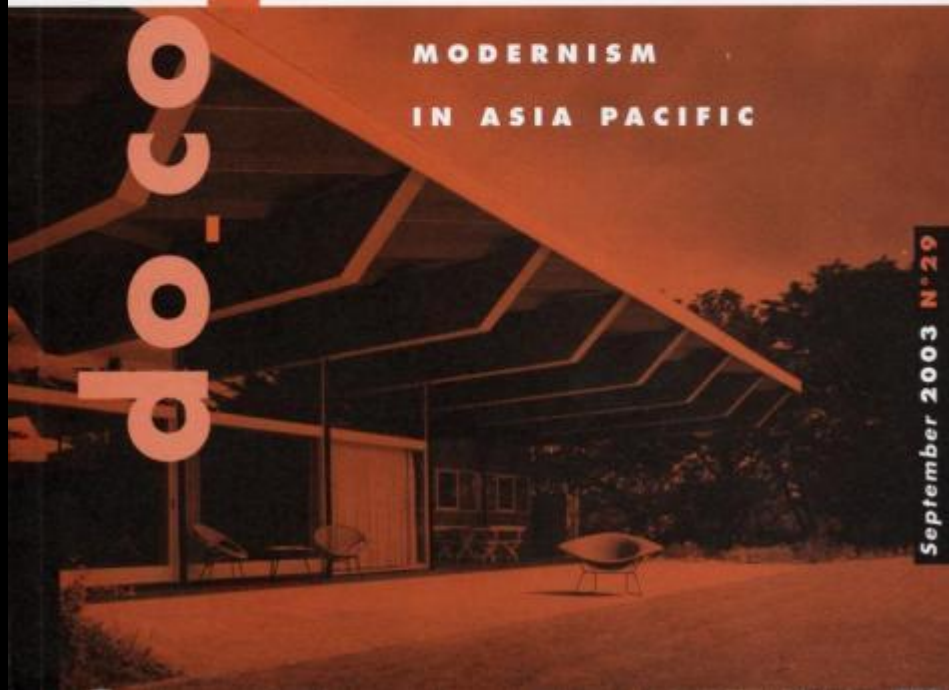
International working party for
documentation and conservation
of buildings, sites and neighbourhoods of the
modern movement



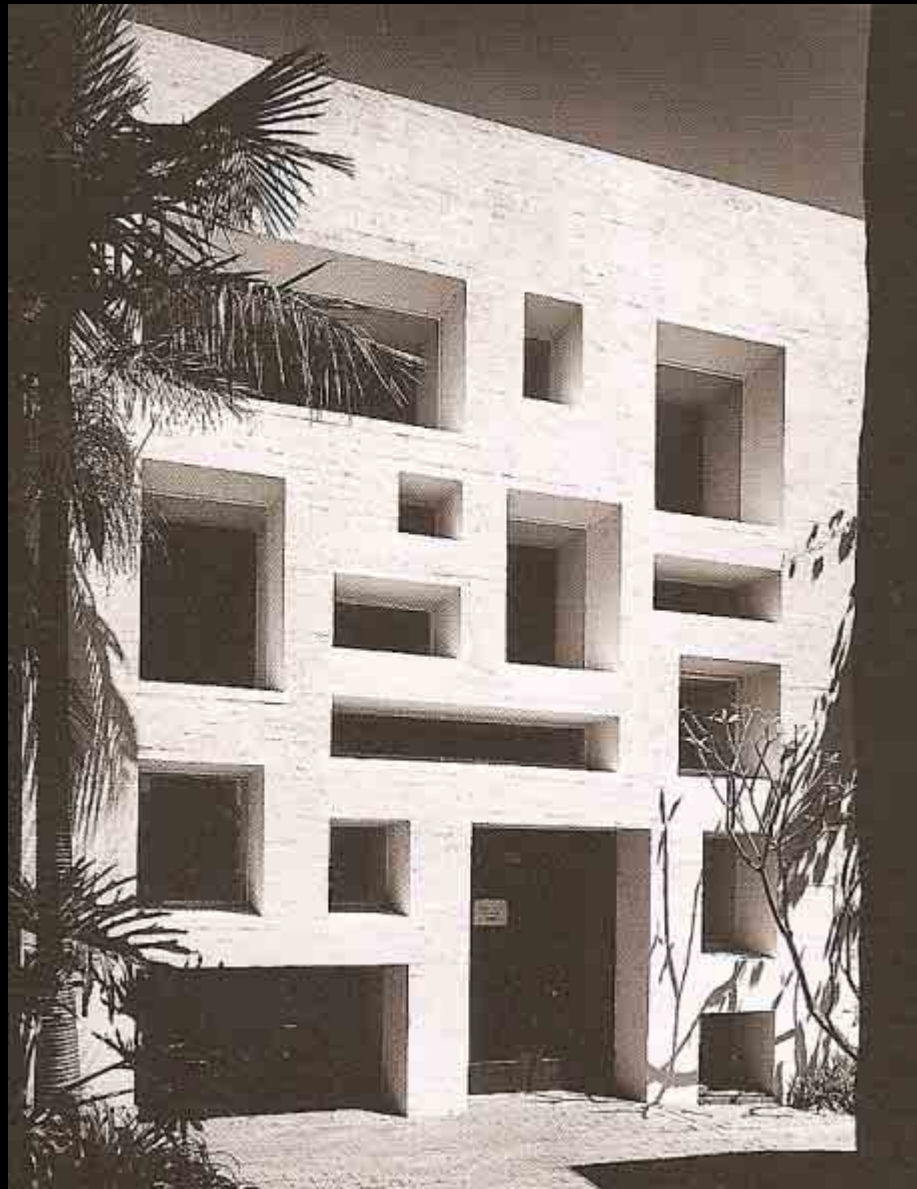
DOCOMOMO Eighth International conference

The restoration of Viipuri Library

**MODERNISM
IN ASIA PACIFIC**



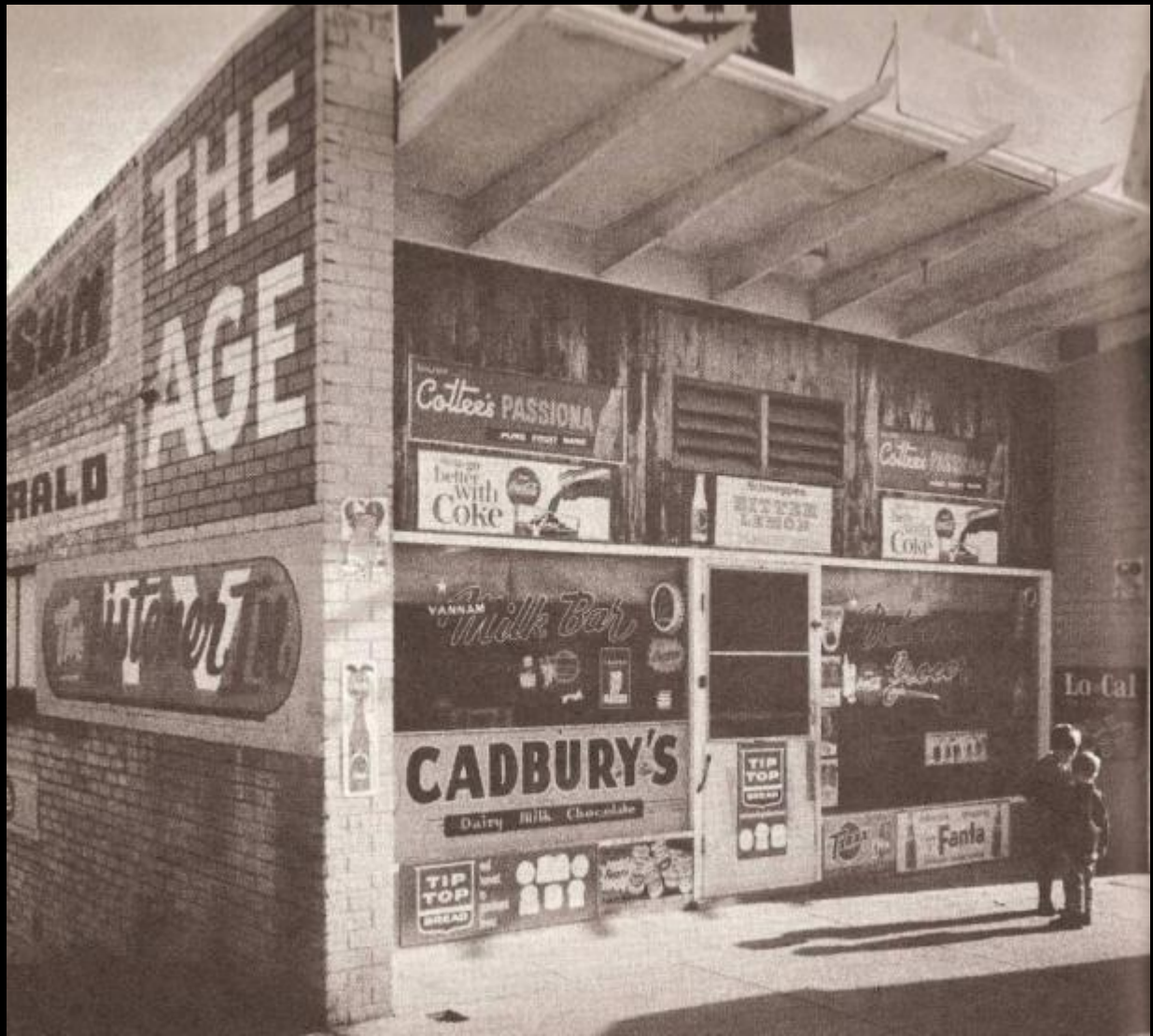
September 2003 N° 29











Source: *Progress Leader*, 2 June 2009

The final bell tolls

Parishioners Cathline Hayes and Mary De Ruge.
PHOTO: PAUL LOUGHWAN

Bianca Carmona

DEVASTATED parishioners have slammed the planned closure of their Ashburton church and the relocation of its memorial garden.

The Diocese of Melbourne will later this month shut the doors at St Matthew's Anglican Church after more than 90 years of worship.

Parishioner Paul McKillop accused the Diocese of a lack of consultation and said the land's commercial property value was and the "blatant money grab".

Church closure labelled a 'money grab'

interment ashes, would be "like digging up a graveyard".

Ashwood's Roy Goldsworthy has been worshipping at the church for 68 years and his late wife, Camelia, had her ashes scattered in the memorial garden.

"We're being forced out," Mr Goldsworthy, 88 said. "It will be a big loss in my life."

The Diocese of Melbourne's

had been continuing for a year. Mr Spiekman said he understood relocating the memorial garden was a "sensitive" issue and the church would work closely with the relatives involved to reach an acceptable outcome. The Diocese is yet to decide what to do with the land.

Mr McKillop feared the closure would leave elderly parishioners isolated.





'I do not think it is possible for domestic architecture to be beautiful, but I am doing my best'



