

Memories of Modernism

The Role of Oral History in the assessment of Post-War Heritage

Simon Reeves



HERITAGE PTY LTD

architectural historians
heritage consultants

TWENTIETH CENTURY SPECIALISTS



1. THE ARCHITECT'S VIEWPOINT

1. THE ARCHITECT'S VIEWPOINT

Design Sources and Influences

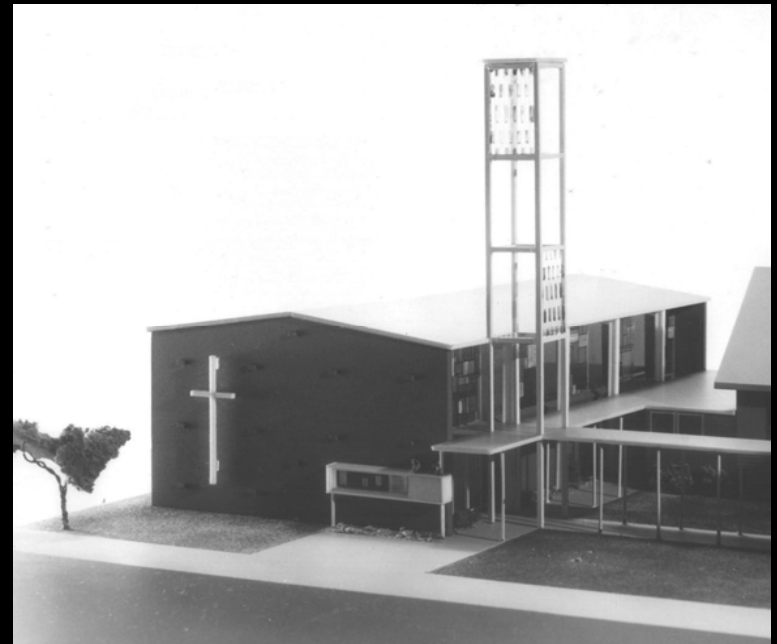


Central Lutheran Church
Portland, Oregon
Pietro Belluschi, 1948-50



Central Lutheran Church
Portland, Oregon
Pietro Belluschi, 1948-50

Pascoe Vale Methodist Church
Pascoe Vale, Victoria
Earle & Bunbury, 1960

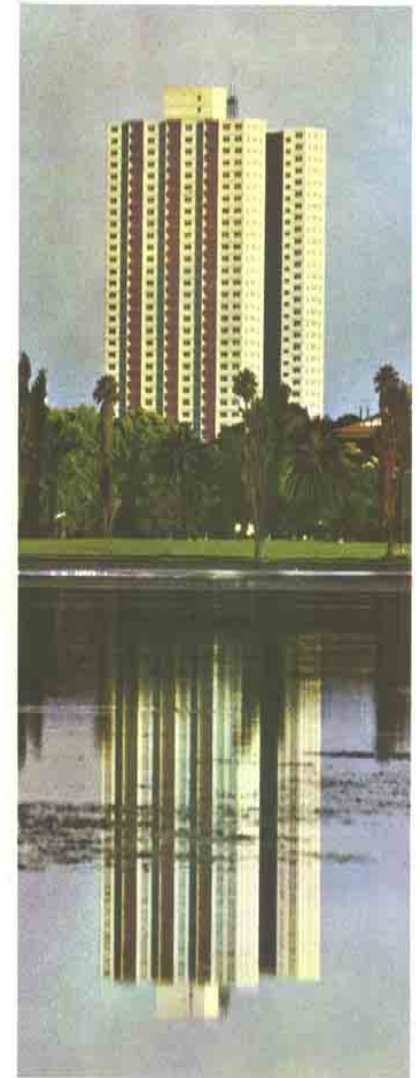




Brighton Synagogue
Marriage Road, Brighton East
Abraham Weinstock, 1965



Brighton Synagogue
Marriage Road, Brighton East
Abraham Weinstock, 1965



PARK TOWERS

Park Street SOUTH MELBOURNE



OFFICE BUILDING, MELBOURNE

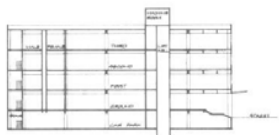
Harry Ernest, Architect

A new modern office building combining both office and parking space has been erected in Flemington road in the heart of the Medical Centre. These offices, surrounded by the Royal Melbourne, New Dental and Royal Children's Hospitals, will provide suites for professional and commercial use.

The building of 150 ft. frontage to Flemington road and a depth of 132 ft. contains four floors of office space totalling 60,000 sq. ft., in addition to parking facilities for 100 cars in the basement. Provision has been made for the addition of two extra floors to be added at a later date.

The office building has three street frontages, all of which are fully glazed to capture the magnificent views. The internal courtyard was the outcome of the architect's aim to provide all offices with good natural light and ventilation. The internal corners of the plan are used for lifts, switch rooms and stairs. Toilet facilities are arranged next to the escape stairs at the rear of each wing, with windows to the open court. Gas, electricity, hot and cold water and wastes have been provided throughout the building in column ducts. High-speed passenger lifts will serve all floors including the basement, thus enabling tenants to park their cars and travel direct to their offices. Sound absorbing ceilings, fluorescent light and vinyl tile flooring have been used throughout.

Construction of the building is of reinforced concrete beam and slab. It has been designed on a 4 ft. modular grid with column centres at 24 ft., thus enabling standardisation of formwork. All beams and columns were kept the same size throughout to save costly formwork, time and labour. The concrete sections from floor to sill were pre-cast on the job and tilted up into position. By the construction taking place from each floor as it



SECTION



Photograph by Latrobe Studios



was poured, tubular steel scaffolding was eliminated. Both concrete pump and monorail were used to speed up the handling of concrete to all parts of the building.

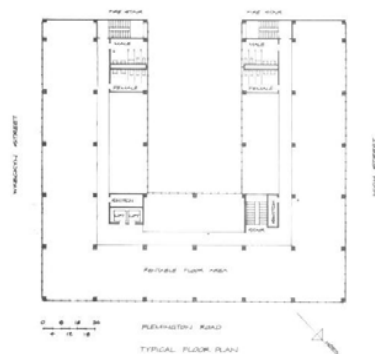
A unique feature of the aluminium curtain wall frames is that they are not screwed together but fit one into the other. This enables each section 12 ft. wide x 11 ft. 4 in. high to move in both a vertical and horizontal direction. Weather proofing is affected with a patented felt joint.

Office windows are glazed with blue-tinted "Anthelios" heat absorbing glass with deep blue "Muro" glass used in the spandril panels. All glazing is fixed with a special aluminium clip-in bead, eliminating use of screws both internally and externally.

As offices may be varied in size, from time to time, to suit individual requirements, all partitions need to be demountable and reusable. In this case 3 in. "Bell-Rock" was used for the first time in Victoria.

Features of the entrance include a cantilevered concrete hood, a wind lobby, imported Italian wall-tiles, reception and waiting facilities and a kiosk for the convenience of the tenants.

Approximate cost of construction was £250,000.





OFFICE BUILDING, MELBOURNE

Harry Ernest, Architect



GROUND FLOOR



Photograph by Latrobe Studios

A new modern office building combining both office and parking space has been erected in Flemington road in the heart of the Medical Centre. These offices, surrounded by the Royal Melbourne, New Dental and Royal Children's Hospitals, will provide suites for professional and commercial use.

The building of 150 ft. frontage to Flemington road and a depth of 132 ft. contains four floors of office space totalling 60,000 sq. ft., in addition to parking facilities for 100 cars in the basement. Provision has been made for the addition of two extra floors to be added at a later date.

The office building has three street frontages, all of which are fully glazed to capture the magnificent views. The internal courtyard was the outcome of the architect's aim to provide all offices with good natural light and ventilation. The internal corners of the plan are used for lifts, switch rooms and stairs. Toilet facilities are arranged next to the escape stairs at the rear of each wing, with windows to the open court. Gas, electricity, hot and cold water and wastes have been provided throughout the building in column ducts. High-speed passenger lifts will serve all floors including the basement, thus enabling tenants to park their cars and travel direct to their offices. Sound absorbing ceilings, fluorescent light and vinyl tile flooring have been used throughout.

Construction of the building is of reinforced concrete beam and slab. It has been designed on a 4 ft. modular grid with column centres at 24 ft., thus enabling standardisation of formwork. All beams and columns were kept the same size throughout to save costly formwork, time and labour. The concrete sections from floor to sill were pre-cast on the job and tilted up into position. By the construction taking place from each floor as it



was poured, tubular steel scaffolding was eliminated. Both concrete pump and monorail were used to speed up the handling of concrete to all parts of the building.

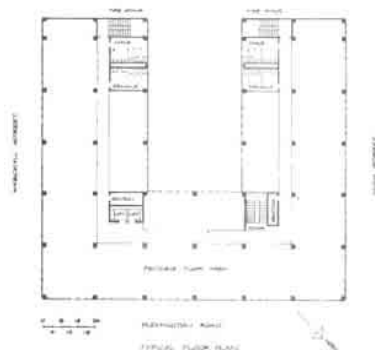
A unique feature of the aluminium curtain wall frames is that they are not screwed together but fit one into the other. This enables each section 12 ft. wide x 11 ft. 4 in. high to move in both a vertical and horizontal direction. Weather proofing is effected with a patented felt joint.

Office windows are glazed with blue-tinted "Anthracite" heat absorbing glass with deep blue "Muro" glass used in the spandril panels. All glazing is fixed with a special aluminium clip-in bead, eliminating use of screws both internally and externally.

As offices may be varied in size, from time to time, to suit individual requirements, all partitions need to be demountable and reusable. In this case 3 in. "Bell-Rock" was used for the first time in Victoria.

Features of the entrance include a cantilevered concrete hood, a wind lobby, imported Italian wall-tiles, reception and waiting facilities and a kiosk for the convenience of the tenants.

Approximate cost of construction was £250,000.





OFFICE BUILDING, MELBOURNE

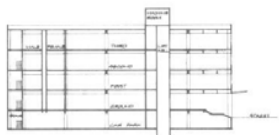
Harry Ernest, Architect

A new modern office building combining both office and parking space has been erected in Flemington road in the heart of the Medical Centre. These offices, surrounded by the Royal Melbourne, New Dental and Royal Children's Hospitals, will provide suites for professional and commercial use.

The building of 150 ft. frontage to Flemington road and a depth of 132 ft. contains four floors of office space totalling 60,000 sq. ft., in addition to parking facilities for 100 cars in the basement. Provision has been made for the addition of two extra floors to be added at a later date.

The office building has three street frontages, all of which are fully glazed to capture the magnificent views. The internal courtyard was the outcome of the architect's aim to provide all offices with good natural light and ventilation. The internal corners of the plan are used for lifts, switch rooms and stairs. Toilet facilities are arranged next to the escape stairs at the rear of each wing, with windows to the open court. Gas, electricity, hot and cold water and wastes have been provided throughout the building in column ducts. High-speed passenger lifts will serve all floors including the basement, thus enabling tenants to park their cars and travel direct to their offices. Sound absorbing ceilings, fluorescent light and vinyl tile flooring have been used throughout.

Construction of the building is of reinforced concrete beam and slab. It has been designed on a 4 ft. modular grid with column centres at 24 ft., thus enabling standardisation of formwork. All beams and columns were kept the same size throughout to save costly formwork, time and labour. The concrete sections from floor to sill were pre-cast on the job and tilted up into position. By the construction taking place from each floor as it



GROUND FLOOR PLAN



Photograph by Latrobe Studios



was poured, tubular steel scaffolding was eliminated. Both concrete pump and monorail were used to speed up the handling of concrete in all parts of the building.

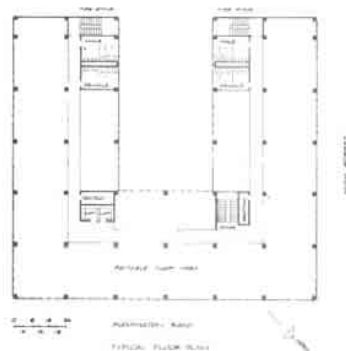
A unique feature of the aluminium curtain wall frames is that they are not screwed together but fit one into the other. This enables each section 12 ft. wide x 11 ft. 4 in. high to move in both a vertical and horizontal direction. Weather proofing is effected with a patented felt joint.

Office windows are glazed with blue-tinted "Anthra" heat absorbing glass with deep blue "Muro" glass used in the spandril panels. All glazing is fixed with a special aluminium clip-in bead, eliminating use of screws both internally and externally.

As offices may be varied in size, from time to time, to suit individual requirements, all partitions need to be demountable and reusable. In this case 3 in. "Bell-Rock" was used for the first time in Victoria.

Features of the entrance include a cantilevered concrete hood, a wind lobby, imported Italian wall-tiles, reception and waiting facilities and a kiosk for the convenience of the tenants.

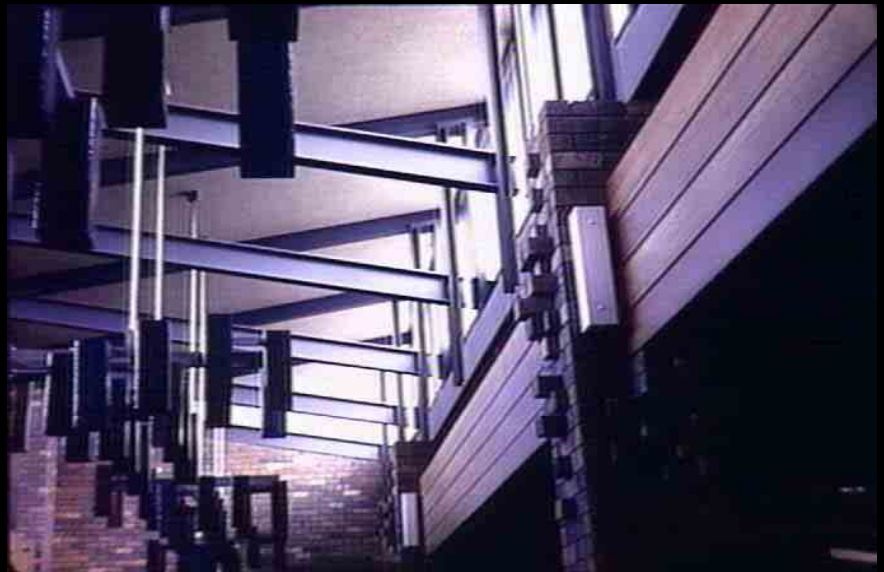
Approximate cost of construction was £250,000.



Hough House
Centre Road, Brighton East
Alan Hough, 1970-71
(Jorgenson & Hough)



Burvale Hotel
Springvale Road, Burwood
Jorgenson & Hough, 1968-69



CONTEMPORARY CHURCH ARCHITECTURE

REINHARD
GIESELMANN

WITH 98 ILLUSTRATIONS
THAMES AND HUDSON



WILLIAM WARDLAW FAIA

PLANNING AND BUILDING THE MODERN CHURCH

F. W. DODGE CORPORATION NEW YORK

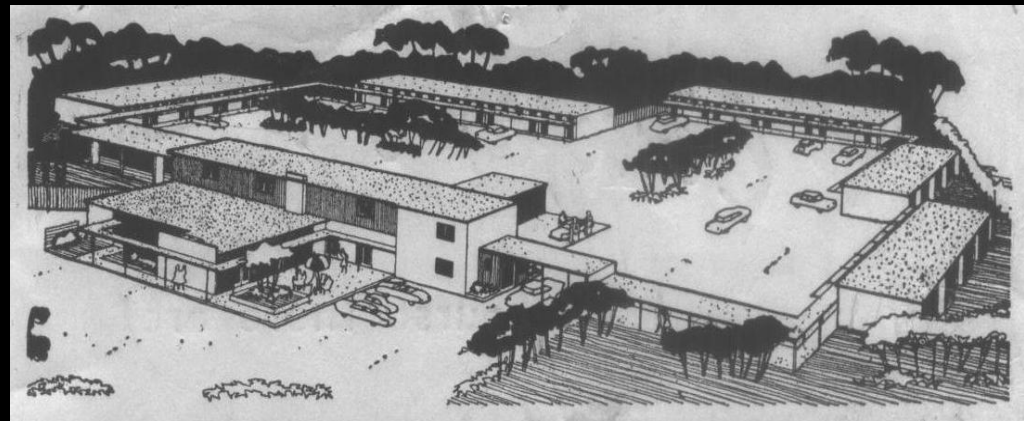
LITURGY and ARCHITECTURE



PETER HAMMOND

Foreword by the Dean of Liverpool

AA Motel
Northbourne Ave, Canberra
Brian O'Connor, 1955



PROPERTY

Here's the motor-age inn—the Motel

The Herald Property Writer

MOTELS have hit New South Wales and soon may be expected in Victoria.

There are 50,000 of them in the U.S. and experts say the number will reach 100,000 in two years.

They have proved good investments and offer strong competition to hotels.

This sketch of the new Canberra motel (right) was drawn by Melbourne architect Brian E. O'Connor, who designed the building.

In his plan he laid particular emphasis on sound-proofing against motor noises, and windows were placed high to avoid car headlight glare at night.

Rooms were grouped around a central court with windows giving private views to occupants. The full-width windows look over a perimeter garden which was planted before building began.

Each room is electrically-heated and controlled. The central office building, a dining room and snack bar are air-conditioned.

Construction of the Canberra motel is of brick and vertical boarding. Walls have divisions for sound-proofing.

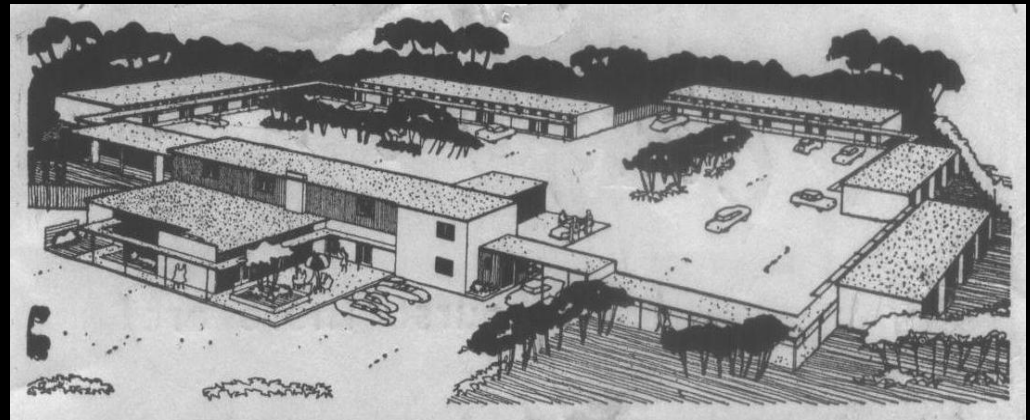
Covered walks join residential sections and afford some protection for the cars, which are parked outside rooms.

Units are planned with alternate single and double rooms so that interconnecting doors, in some cases, permit suites.

Rooms are allocated from the central office and paid for in advance. A filling station and car wash add to the benefits of the motel.



AA Motel
Northbourne Ave, Canberra
Brian O'Connor, 1955



Reinhold
Progressive Architecture Library



MOTELS

GEOFFREY BAKER & BRUNO FUNARO



PROPERTY Here's the motor-age inn—the Motel

The Herald Property Writer

MOTELS have hit New South Wales and soon may be expected in Victoria.

There are 60,000 of them in the U.S. and experts say the number will reach 100,000 in two years.

They have proved good investments and offer strong competition to hotels.

This sketch of the new Canberra motel (right) was drawn by Melbourne architect Brian E. O'Connor, who designed the building.

In his plan he laid particular emphasis on sound-proofing against motor noises, and windows were placed high to avoid car headlight glare at night.

Rooms were grouped around a central court with windows giving private views to occupants. The full-width windows look over a perimeter garden which was planted before building began.

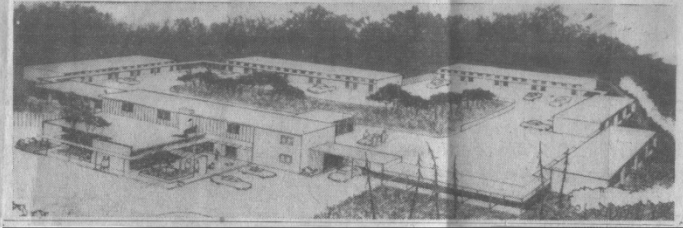
Each room is electrically-heated and controlled. The central office building, a dining room and snack bar are air-conditioned.

Construction of the Canberra motel is of brick and vertical boarding. Walls have divisions for sound-proofing.

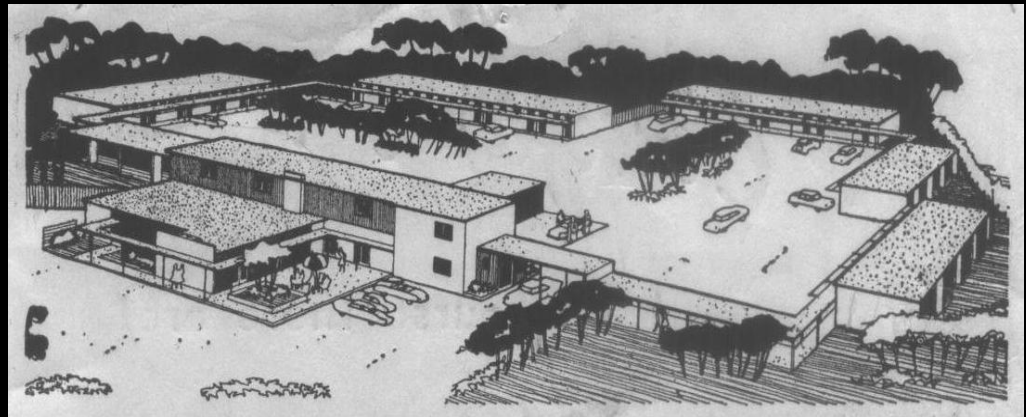
Covered walks join residential sections and afford some protection for the cars, which are parked outside rooms.

Units are planned with alternate single and double rooms so that interconnecting doors, in some cases, permit suites.

Rooms are allocated from the central office and paid for in advance. A filling station and car wash add to the benefits of the motel.

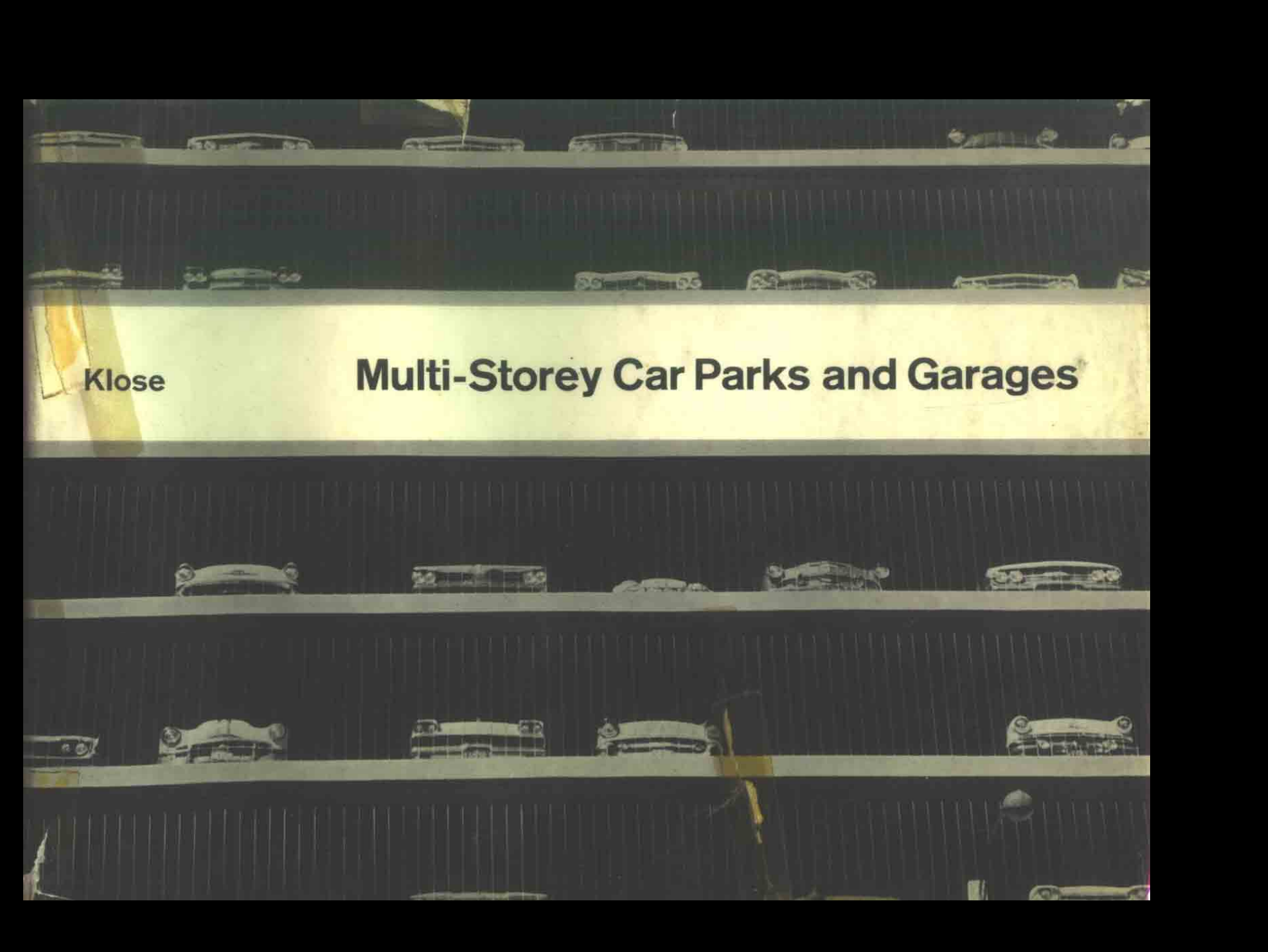


AA Motel
Northbourne Ave, Canberra
Brian O'Connor, 1955





Total Car Park & Offices
Bogle & Banfield, 1964



Klose

Multi-Storey Car Parks and Garages

TIMOTHY FLETCHER AND CARPILLID
architects 112 Jolimont Rd. Melbourne

Dietrich Klose

Multi-Storey Car Parks and Garages

The Architectural Press, London

City of Essendon Public Library
Mt Alexander Rd, Moonee Ponds
Harry Winbush, 1964



City of Essendon Public Library
Mt Alexander Rd, Moonee Ponds
Harry Winbush, 1964



HARRY WINBUSH
50 FLETCHER ST
ESSENDON, WS.

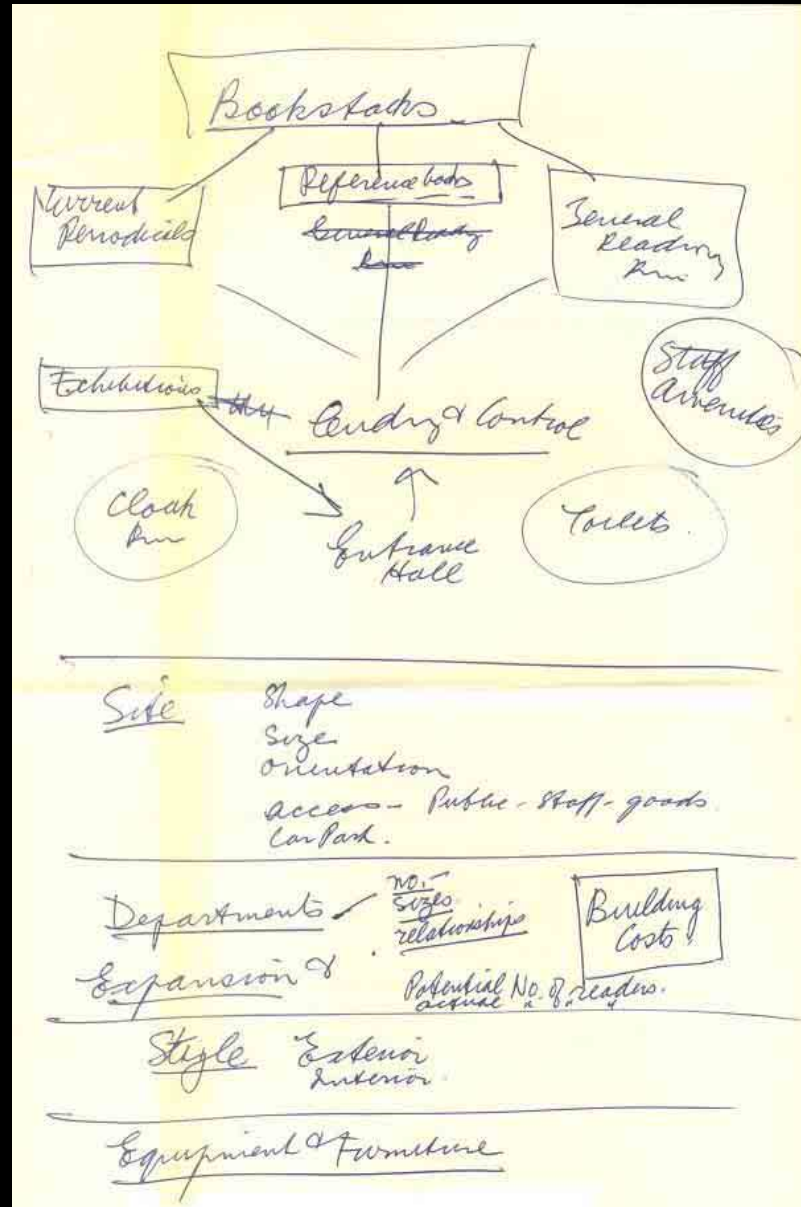
LIBRARY BUILDINGS OF BRITAIN AND EUROPE

An international study, with examples
mainly from Britain and some from Europe
and overseas

Anthony Thompson, M.A., F.L.A.
with contributions by specialists

LONDON
BUTTERWORTHS
1963

City of Essendon Public Library
Mt Alexander Rd, Moonee Ponds
Harry Winbush, 1964



1. THE ARCHITECT'S VIEWPOINT

Design Sources and Influences

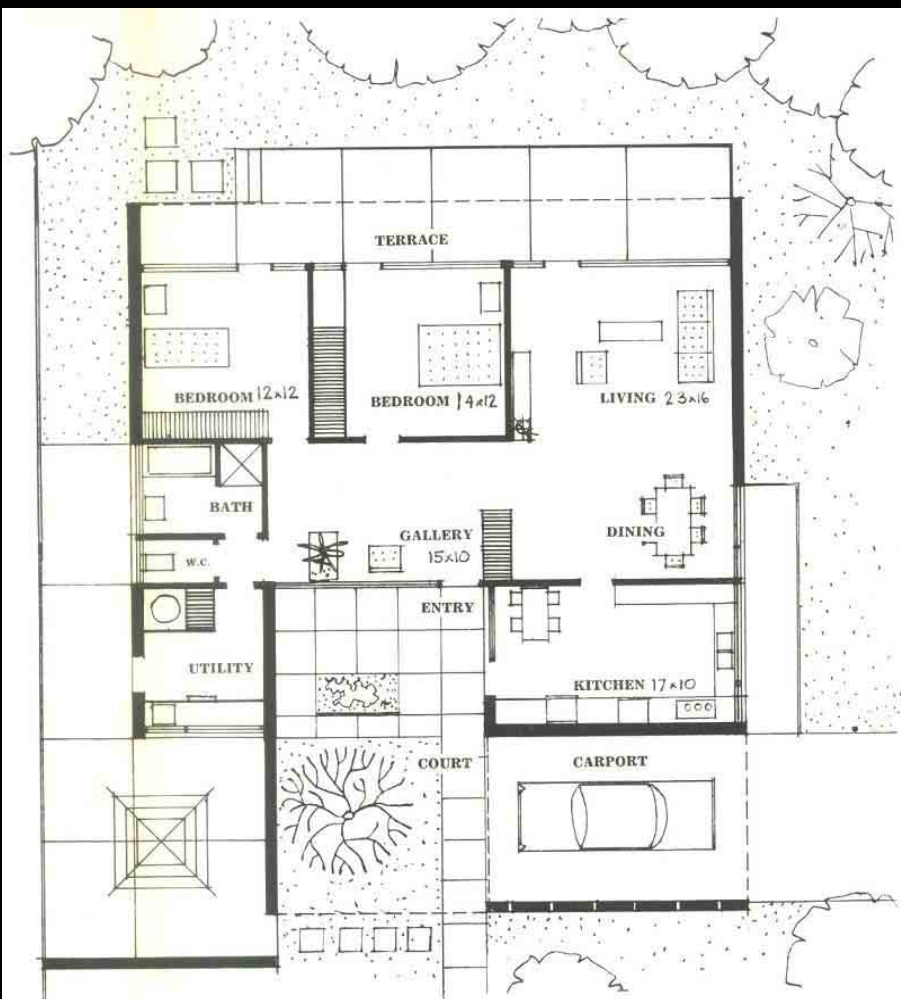
Placing Projects in Context



best Australian houses

*recent houses built by members of
THE ROYAL AUSTRALIAN INSTITUTE OF ARCHITECTS*

edited by NEIL CLEREHAN



7 KEW Victoria

ARCHITECT : Harry Ernest

The houses architects are asked to design are generally above average in size, quality and cost, but in recent

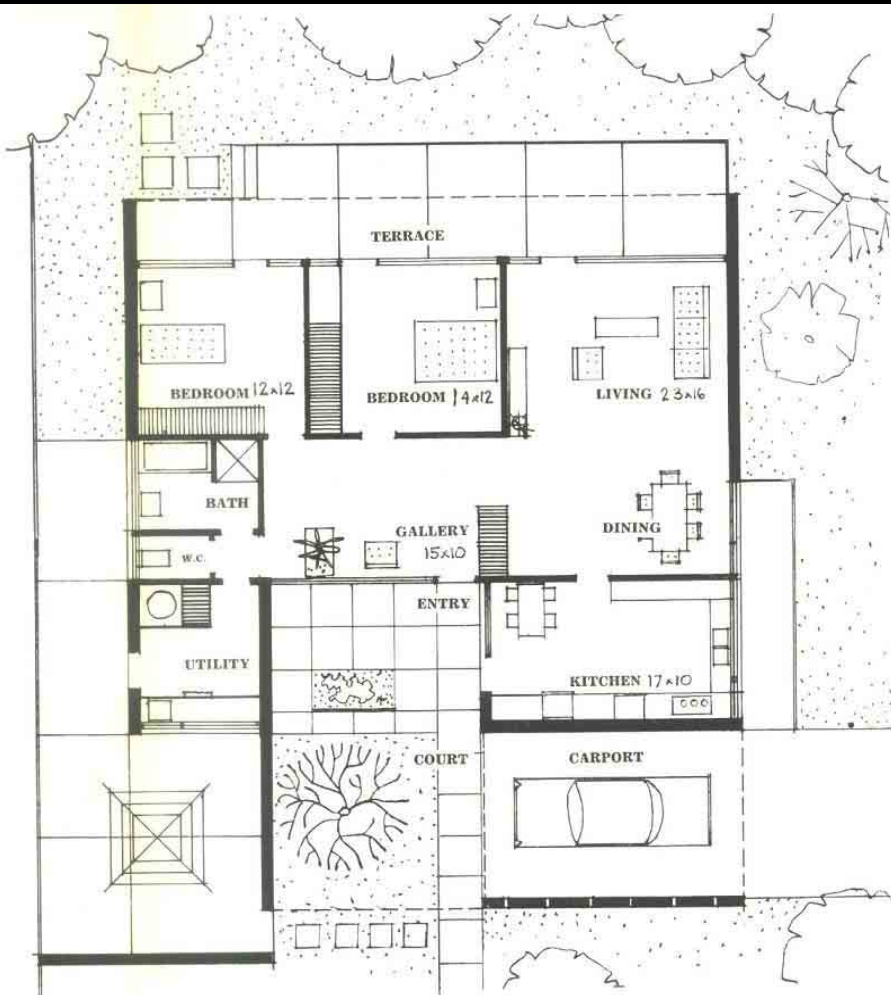
years they have been designing more and more small houses. This is because expensive houses in capital



best Australian houses

recent houses built by members of
THE ROYAL AUSTRALIAN INSTITUTE OF ARCHITECTS

edited by NEIL CLEREHAN

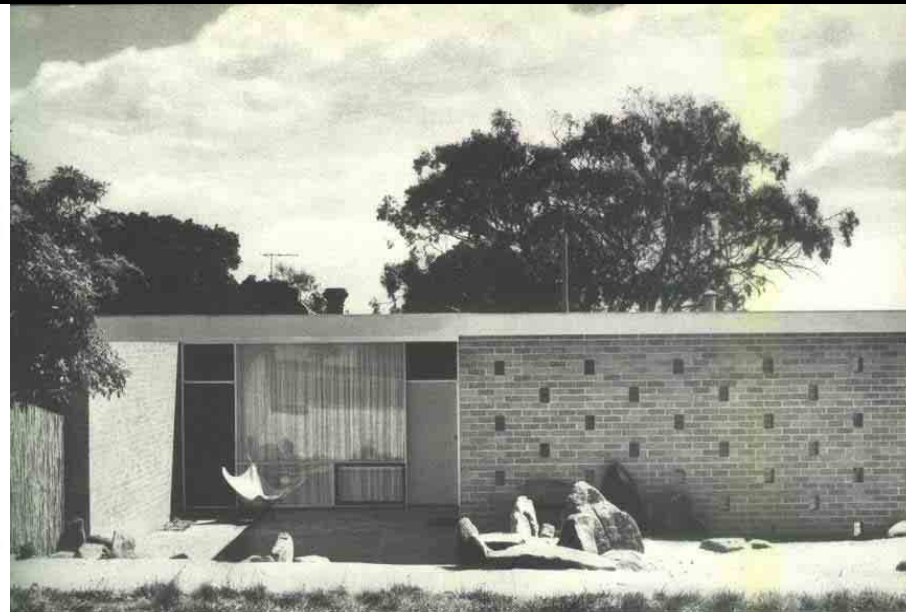


7 KEW Victoria

ARCHITECT : Harry Ernest

The houses architects are asked to design are generally above average in size, quality and cost, but in recent

years they have been designing more and more small houses. This is because expensive houses in capital



cities are being erected on very small blocks of land and people whose families have grown up are building smaller houses to live in.

This Kew house is on a corner site facing south and east. To capture the northern sun and garden view, the three main rooms have been put at the back where they give on to a terrace and thence to the lawn below. The kitchen overlooks the entrance court and side street. The service area is relegated to the west. The drying yard and carport face the main street but are screened, the former by a stone wall, the latter by a pierced brick wall. Entry is from the side street.

The rear consists entirely of windows. A wide timber-lined eave excludes summer sun.

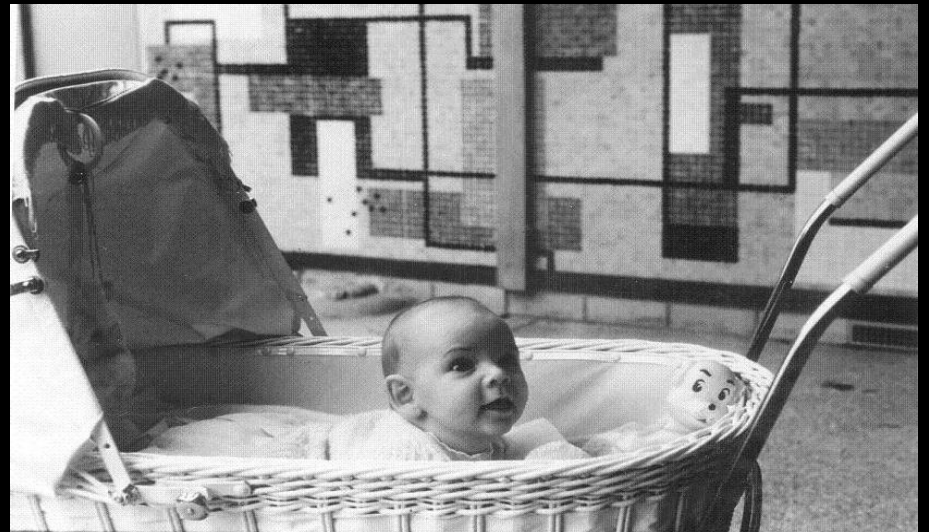
In the large entrance hall a free-standing cupboard,

Kew V

sheeted with Japanese wallpaper, screens the door to the service area.

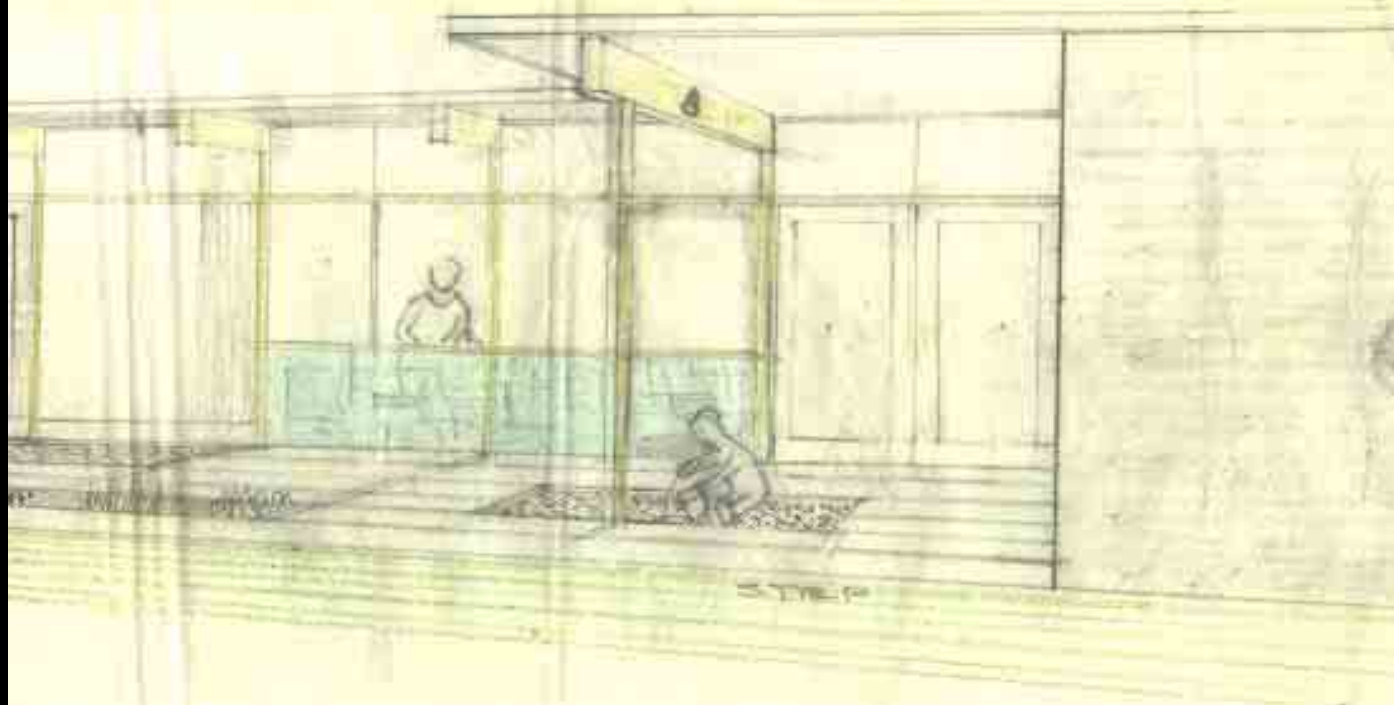
The livingroom looking north across the back garden has flush plaster walls and ceiling. This room, together with the main bedroom and lobby, is heated by electric coils between the hardwood floor and the carpet. A Japanese paper has been used on one wall.





Barry House 1
Roosevelt Court, Brighton East
McGlashan & Everist, 1957





VIEW OF REAR TERRACE

1. THE ARCHITECT'S VIEWPOINT

Design Sources and Influences

Placing Projects in Context

Placing Designers in Context





Hardcastle House
Ashburn Grove, Ashburton
Ken Hardcastle, 1950



Atkins House
Scott Street, Beaumaris
Ken Atkins, 1953



Rendell House
Clonmore Avenue, Beaumaris
Ken Rendell, 1964



Hardcastle House
Ashburn Grove, Ashburton
Ken Hardcastle, 1950
Godfrey, Spowers, Hughes, Mewton & Lobb



Atkins House
Scott Street, Beaumaris
Ken Atkins, 1953
J F D Scarborough & Associates



Rendell House
Clonmore Avenue, Beaumaris
Ken Rendell, 1964
Don Hendry Fulton & Associates



Hassett House
Bolton Street, Black Rock
D C Crone, 1954







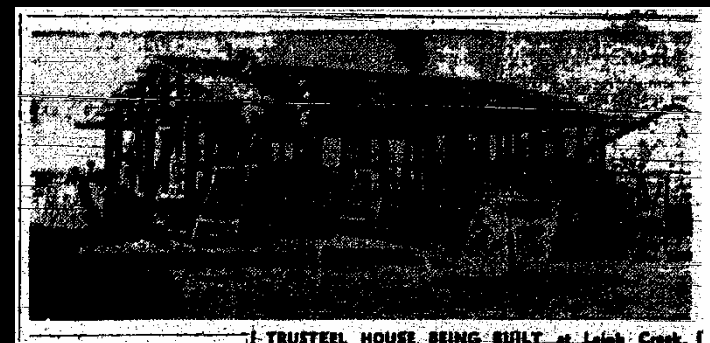
Cook House
Weatherall Road, Cheltenham
Charles Cook, 1956



Cook House
Weatherall Road, Cheltenham
Charles Cook, 1956
Trusteel Corporation



Cook House
Weatherall Road, Cheltenham
Charles Cook, 1956
Trusteel Corporation



TRUSTEEL HOUSE BEING BUILT at Leigh Creek, South Australia. The light steel frame has been erected, enabling bricklayers, joiners and roofers to work simultaneously, causing a great saving of construction time.

SAVING TIME IN HOUSE BUILDING

Herald Property Writer

The problem of speeding up one and two storey building appears to have been solved by the Trusteel system, which is being used for the Wodonga Hospital.

In simple terms the Trusteel system means the use of a lightweight steel frame instead of heavy rolled steel or timber framing or cavity brick construction.

Bolts are not needed to connect the frame members and it is claimed that three men can erect the walls and roof framing of a 10-square house in a day and a half.

From this stage all the

trades can operate concurrently. Trusteel claims that fact enables a pair of semi-detached two-storey homes to be completed in 21 days in Britain.

Single-storey houses in Australia would on this basis require only 100 man hours—say 10 men for three weeks—for completion.

In South Australia 38 houses are being built with Trusteel by the Electricity Trust.

Trusteel corporation in Melbourne has Australian directors and mostly Australian capital.

Easily assembled

This system is not prefabrication, but a new development of traditional construction providing efficient, easily-assembled fireproof framing for all lighter types of buildings.

Usually Trusteel buildings are erected by contractors, but the Wodonga Hospital is being put up by Trusteel Corporation for demonstration purposes.

Unlike prefabricated building a Trusteel unit offers full flexibility in design and finish. In England, the Trusteel houses have brick veneer walls and tiled roofs. But weatherboard walls and asbestos cement roofs may be used.

1. THE ARCHITECT'S VIEWPOINT

Design Sources and Influences

Placing Projects in Context

Placing Designers in Context

2. THE CLIENT'S VIEWPOINT

1. THE ARCHITECT'S VIEWPOINT

Design Sources and Influences

Placing Projects in Context

Placing Designers in Context

2. THE CLIENT'S VIEWPOINT

Selecting a Suburb



Muckle Flugga
Burgess House
High Street, Beaumaris
Chancellor & Patrick, 1959

1. THE ARCHITECT'S VIEWPOINT

Design Sources and Influences

Placing Projects in Context

Placing Designers in Context

2. THE CLIENT'S VIEWPOINT

Selecting a Suburb

Engaging an Architect

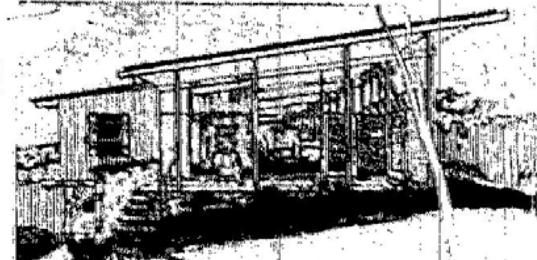


Grutzner House
Haydens Road, Beaumaris
Mockridge, Stahle & Mitchell, 1958-59



Grutzner House
Haydens Road, Beaumaris
Mockridge, Stahle & Mitchell, 1958-59

Beaumaris house with Bay view



ADVANTAGE HAS BEEN taken of the drop in the land to place the car port under the corner of this house just being completed in Haydens Rd., Beaumaris.

By MARY FERROTT, The Herald
Property Writer

WHEN there is a view from the site and especially when the land is on the crest of a hill, it is usually possible to use these to advantage in planning an interesting house.

THE GRUTZNER house, the first with the modern style, is planned with the bay in mind. The architect, Mr. M. F. W. Mockridge, has taken full advantage of the fall of the land to place the car port under the corner of the house.

The architect, Mr. Mockridge, has taken full advantage of the fall of the land to place the car port under the corner of the house.

The architect, Mr. Mockridge, has taken full advantage of the fall of the land to place the car port under the corner of the house.

The architect, Mr. Mockridge, has taken full advantage of the fall of the land to place the car port under the corner of the house.

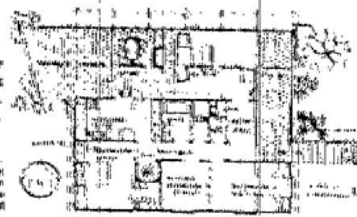
The architect, Mr. Mockridge, has taken full advantage of the fall of the land to place the car port under the corner of the house.

The architect, Mr. Mockridge, has taken full advantage of the fall of the land to place the car port under the corner of the house.

The architect, Mr. Mockridge, has taken full advantage of the fall of the land to place the car port under the corner of the house.

The architect, Mr. Mockridge, has taken full advantage of the fall of the land to place the car port under the corner of the house.

The architect, Mr. Mockridge, has taken full advantage of the fall of the land to place the car port under the corner of the house.



GROUND PLAN of Beaumaris house. The car port is under the large bedroom and the living room under the second bedroom.

The architect, Mr. Mockridge, has taken full advantage of the fall of the land to place the car port under the corner of the house.

The architect, Mr. Mockridge, has taken full advantage of the fall of the land to place the car port under the corner of the house.

The architect, Mr. Mockridge, has taken full advantage of the fall of the land to place the car port under the corner of the house.

The architect, Mr. Mockridge, has taken full advantage of the fall of the land to place the car port under the corner of the house.

The architect, Mr. Mockridge, has taken full advantage of the fall of the land to place the car port under the corner of the house.

The architect, Mr. Mockridge, has taken full advantage of the fall of the land to place the car port under the corner of the house.

The architect, Mr. Mockridge, has taken full advantage of the fall of the land to place the car port under the corner of the house.

The architect, Mr. Mockridge, has taken full advantage of the fall of the land to place the car port under the corner of the house.

Gye House
Florida Avenue, Beaumaris
James Earle, 1957



WASH'N'WEAR GUIDE TO SYNTHETICS

Home Beautiful

PACE-SETTER FOR AUSTRALIAN HOMEMAKERS

JULY, 1961. 2/6

4 Major Projects
to beat the 'Squeeze'



1. THE ARCHITECT'S VIEWPOINT

Design Sources and Influences

Placing Projects in Context

Placing Designers in Context

2. THE CLIENT'S VIEWPOINT

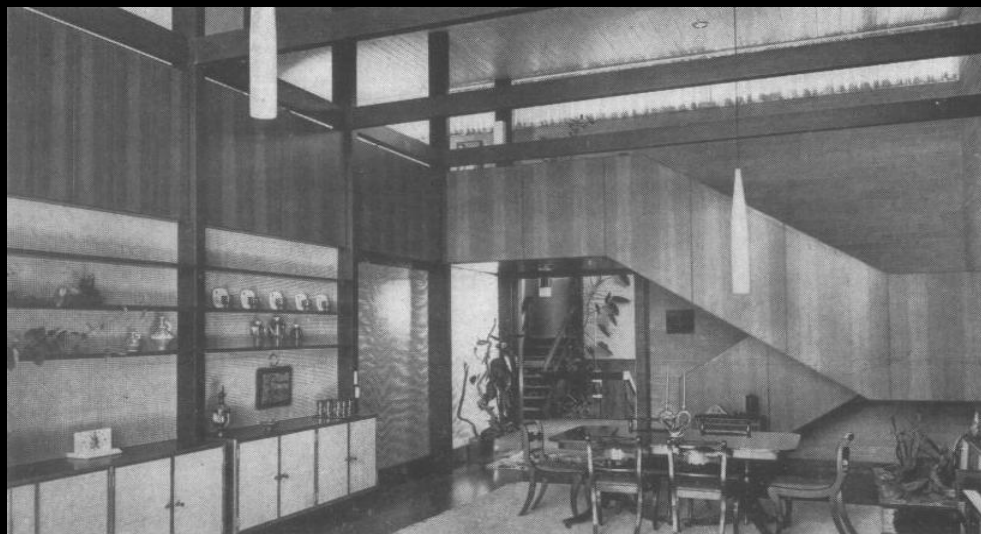
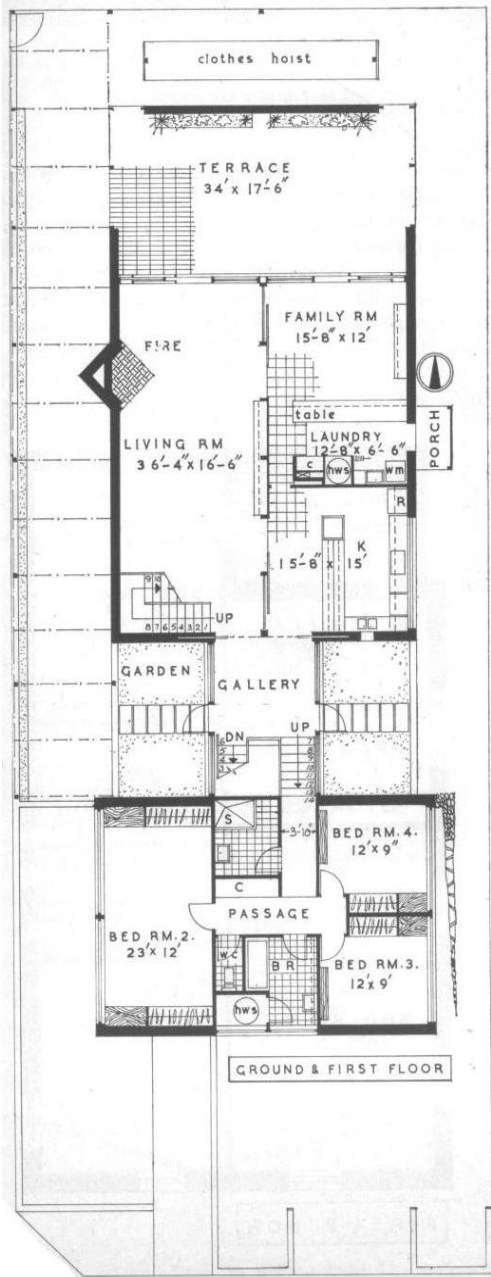
Selecting a Suburb

Engaging an Architect

Design and Construction



Shallcross House
Dendy Street, Brighton East
Montgomery, King & Trengove,
1962



Mirrabooka
Pearce House
Moore Road, Vermont
Grounds, Romberg & Boyd, 1959





Mirrabooka
Pearce House
Moore Road, Vermont
Grounds, Romberg & Boyd, 1959



1. THE ARCHITECT'S VIEWPOINT

Design Sources and Influences

Placing Projects in Context

Placing Designers in Context

2. THE CLIENT'S VIEWPOINT

Selecting a Suburb

Engaging an Architect

Design and Construction

Documenting Changes





1. THE ARCHITECT'S VIEWPOINT

Design Sources and Influences

Placing Projects in Context

Placing Designers in Context

2. THE CLIENT'S VIEWPOINT

Selecting a Suburb

Engaging an Architect

Design and Construction

Documenting Changes

3. PITFALLS OF ORAL HISTORY

1. THE ARCHITECT'S VIEWPOINT

Design Sources and Influences

Placing Projects in Context

Placing Designers in Context

2. THE CLIENT'S VIEWPOINT

Selecting a Suburb

Engaging an Architect

Design and Construction

Documenting Changes

3. PITFALLS OF ORAL HISTORY

Re-written History

1. THE ARCHITECT'S VIEWPOINT

Design Sources and Influences

Placing Projects in Context

Placing Designers in Context

2. THE CLIENT'S VIEWPOINT

Selecting a Suburb

Engaging an Architect

Design and Construction

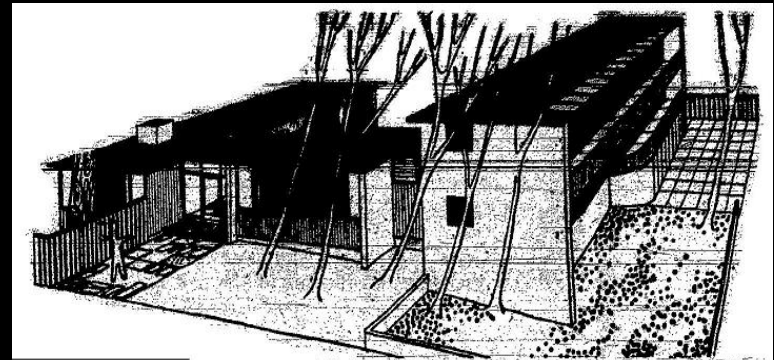
Documenting Changes

3. PITFALLS OF ORAL HISTORY

Re-written History

Opposition





ARCHITECTS DRAWING of house being built at Beaumaris, with an impression of wind bent tea trees which formed part of the original scrub.

BEAUMARIS HOUSE BUILT FOR FUTURE

Living space easily capable of expansion to meet family needs, and of contraction when the family has grown up, is the far-sighted idea behind an attractive house being built in Valmont Avenue, Beaumaris.

This house, "H" shaped in final form, is being planned in three distinct zones beginning with a central service core containing all the plumbing, and capable of providing comfortable living for two people.

This first stage of six squares containing all modern amenities will cost £250 a square—£25100.

Then, as the family arrives, either a ground floor bedroom wing, first floor bedroom wing, or the living area will be added—not necessarily in that order.

Finally, when all the children have left the parental nest to make their own way in the world, the various sections of the house could be easily converted to self-contained flats.

The house, which has been designed by archi-

toilet and shower recess. The storage cupboard here includes a rear allotted section to store awkward items such as card tables and other games equipment.

LIVING BLOCK

The living block comprises dining-room, lounge and den at the southern end. A fireplace dividing dining-room and lounge will retain maximum heat in the house.

The fall of the land provides space for a double garage under the bedroom wing to be constructed as the family grows. This will be in two floors facing north. Built-in furniture and northern balconies are provided.

With this "H" construction four garden courts can be formed. Formal gardens will face bedrooms and main entrance, with service garden to the west and a garden for relaxation off the lounge.

Construction is of timber framed on a brick base, with the future bedroom wing to be in brick. The external timber cladding will be vertical oiled hardwood.

CORK TILES

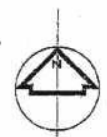
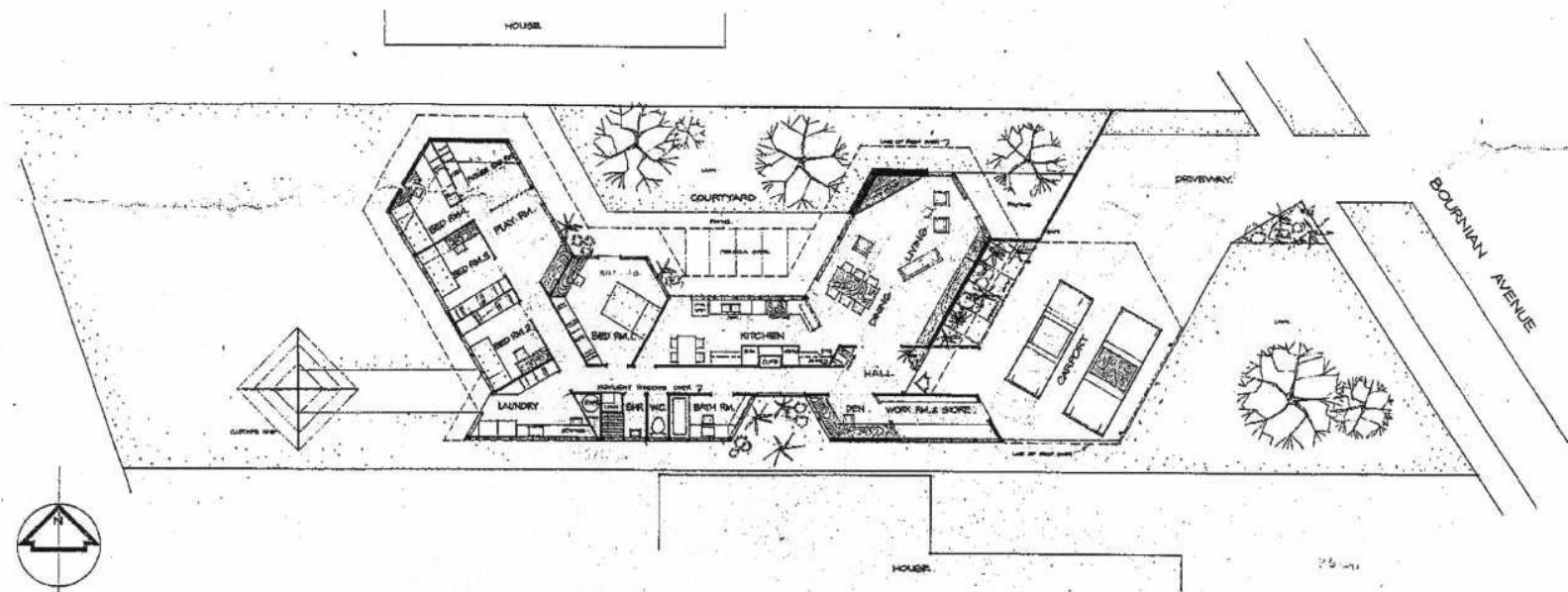
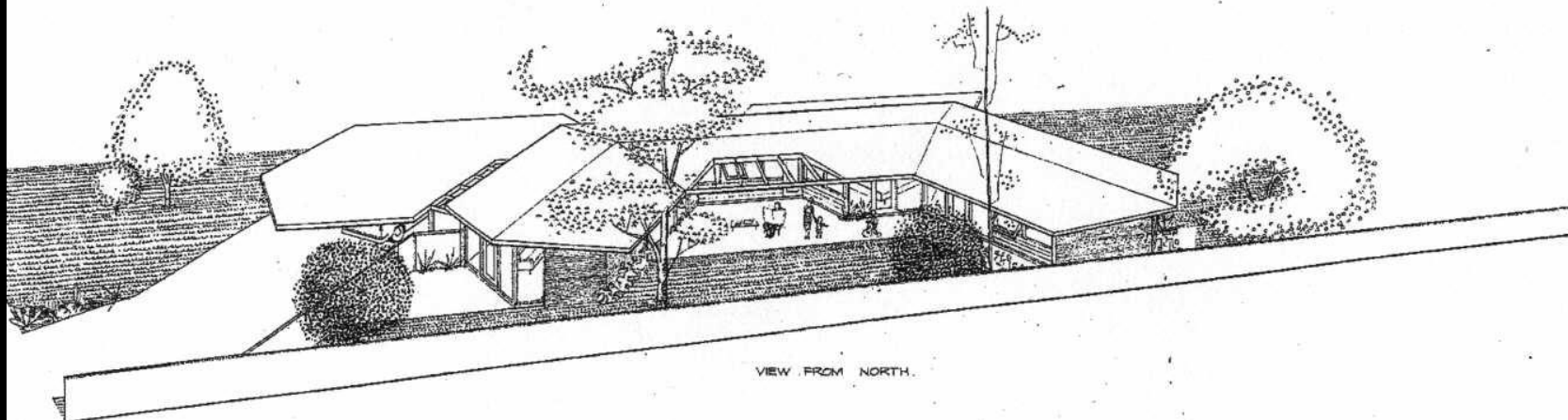
Cork tiles are used extensively to the service units. The west wall to the den is lined internally in vertical oak, and the rooming courtyard with oak wall to the rumpus, small bath in both rooms is in oak.

The kitchen adjoining a glazed entrance lobby is in reality an all-glass box 9 feet square, with floor tiled in large three ft. square black and white tiles.

The rumpus room has a slow-combustion coke heater to provide background warmth to the living quarters during the winter months.

The laundry has stainless steel trough, hot water service, washing machine, electric copper and drying cabinet.

There is a separate bath- room, and a small bathroom in both bedrooms is in oak.



RESIDENCE BOURNIAN AVENUE STRATHMORE

EARLE AND SUNBURY ARCHITECTS

25 QUEEN ST. NEW

WM6904

WM6936

MARCH '58

DRG. NO. 5907/15

SCALE: $\frac{1}{4}'' = 1'-0''$



HERITAGE PTY
LTD

architectural historians
heritage consultants

TWENTIETH CENTURY SPECIALISTS