

drowning by numbers

The Commercial Transformation of the Harold Holt Pool

Dr. Peter Raisbeck *Melbourne University*

Anna Ely *Anna Ely Architects*









URBAN CONTENTS PLAN



HAROLD HOLT MEMORIAL SWIMMING CENTRE

GLEN IRIS

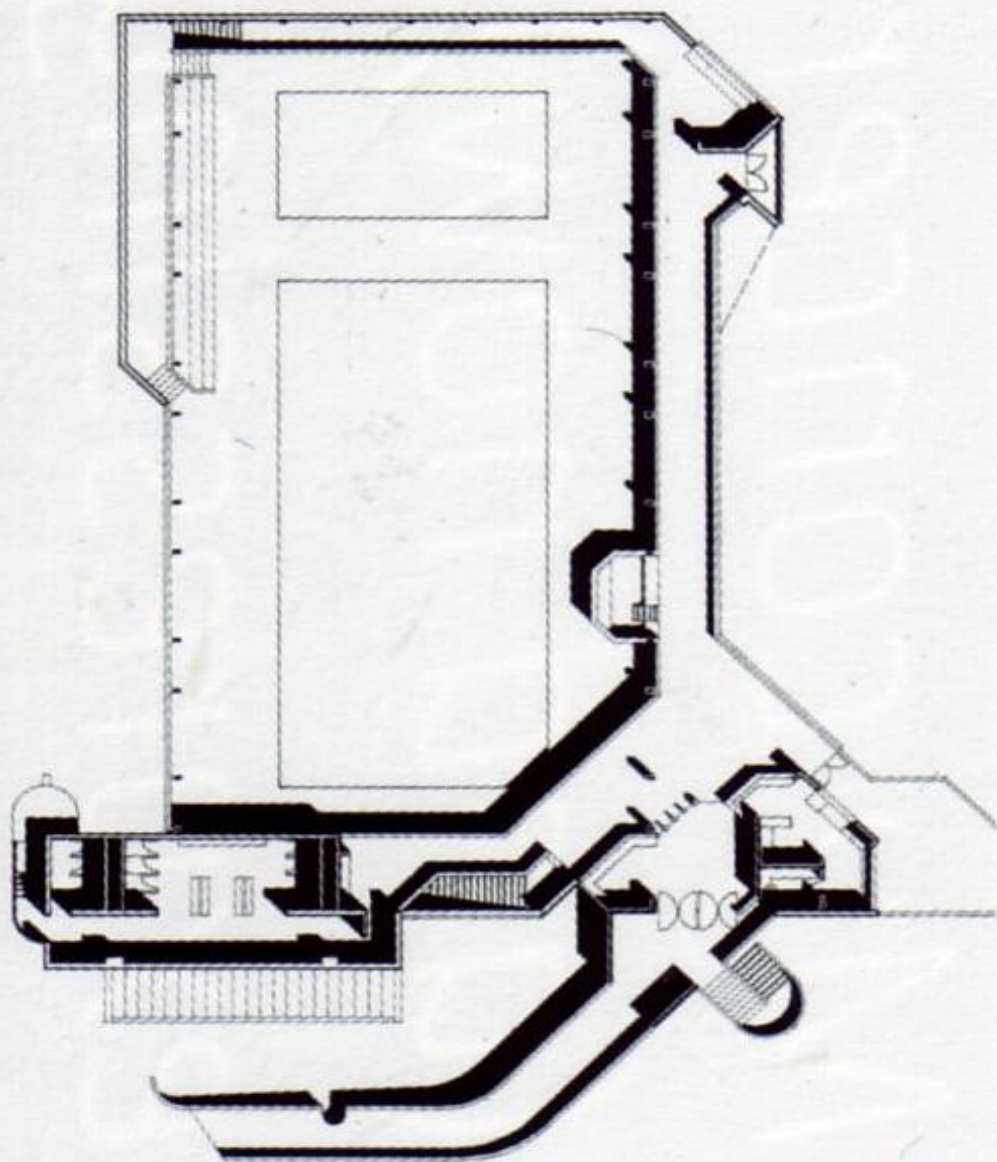
PEDDLETHORPARCHITECTS

Level 20, 160 W Bays Street
Melbourne Victoria Australia 3002
Tel: 61 3 9623 2222 Fax: 61 3 9623 4491
Email: info@pda.com.au Web: www.pda.com.au
ACN: 084 915 648

Project No: 3-4651
Issued: HERITAGE
Rev: HERITAGE VICTORIA
Date: SEPTEMBER 2007

TP001

SITE PLAN



Harold Holt

memorial swimming centre
glen iris

PeddleThorp Architects

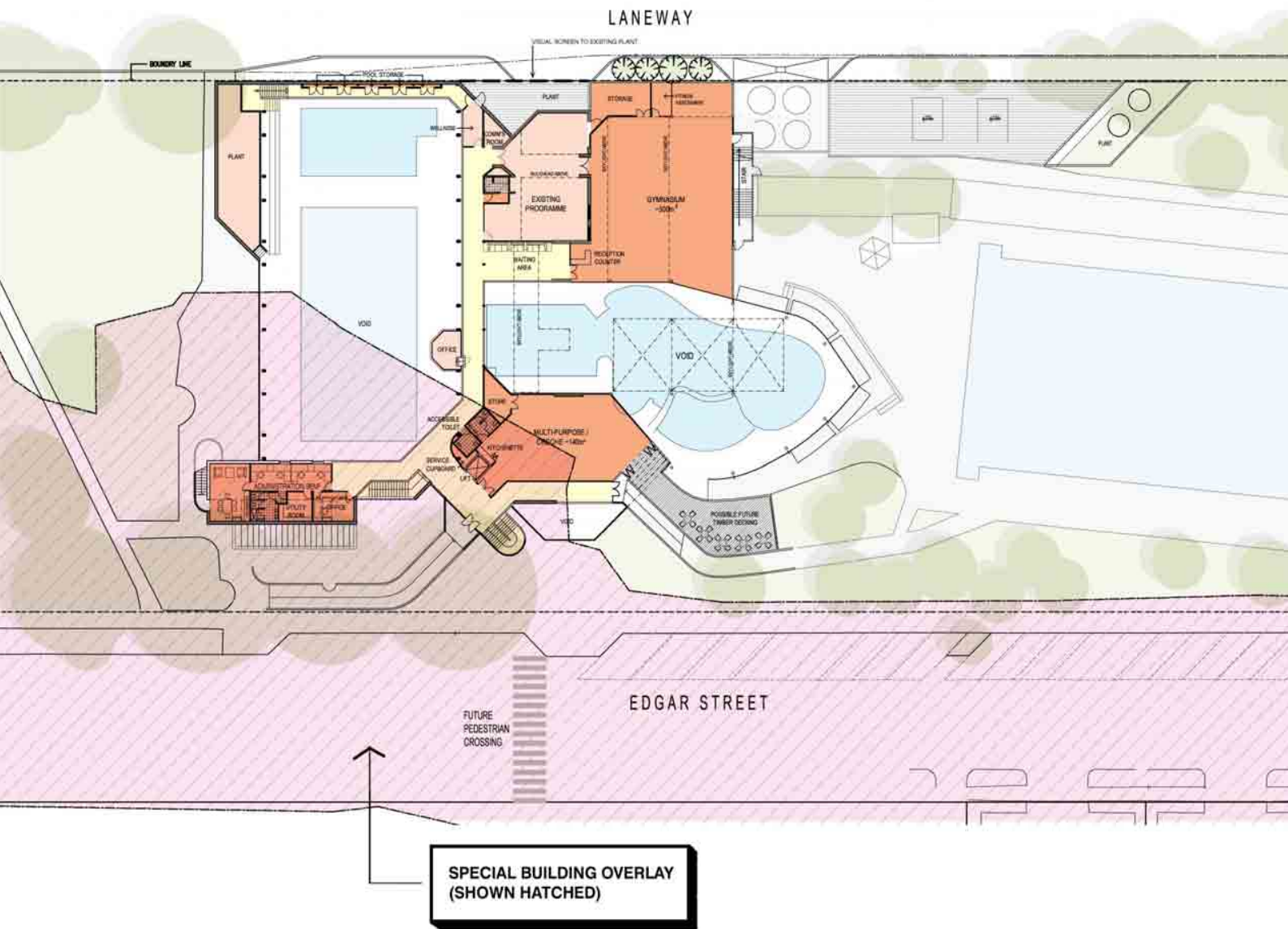
Level 28, 140, William Street
Melbourne, Victoria, Australia 3000
TEL: 81 03 9602 4766 FAX: 81 03 9670 4441
ACT: 006 175 968 email: info@pta.com.au http://www.pta.com.au

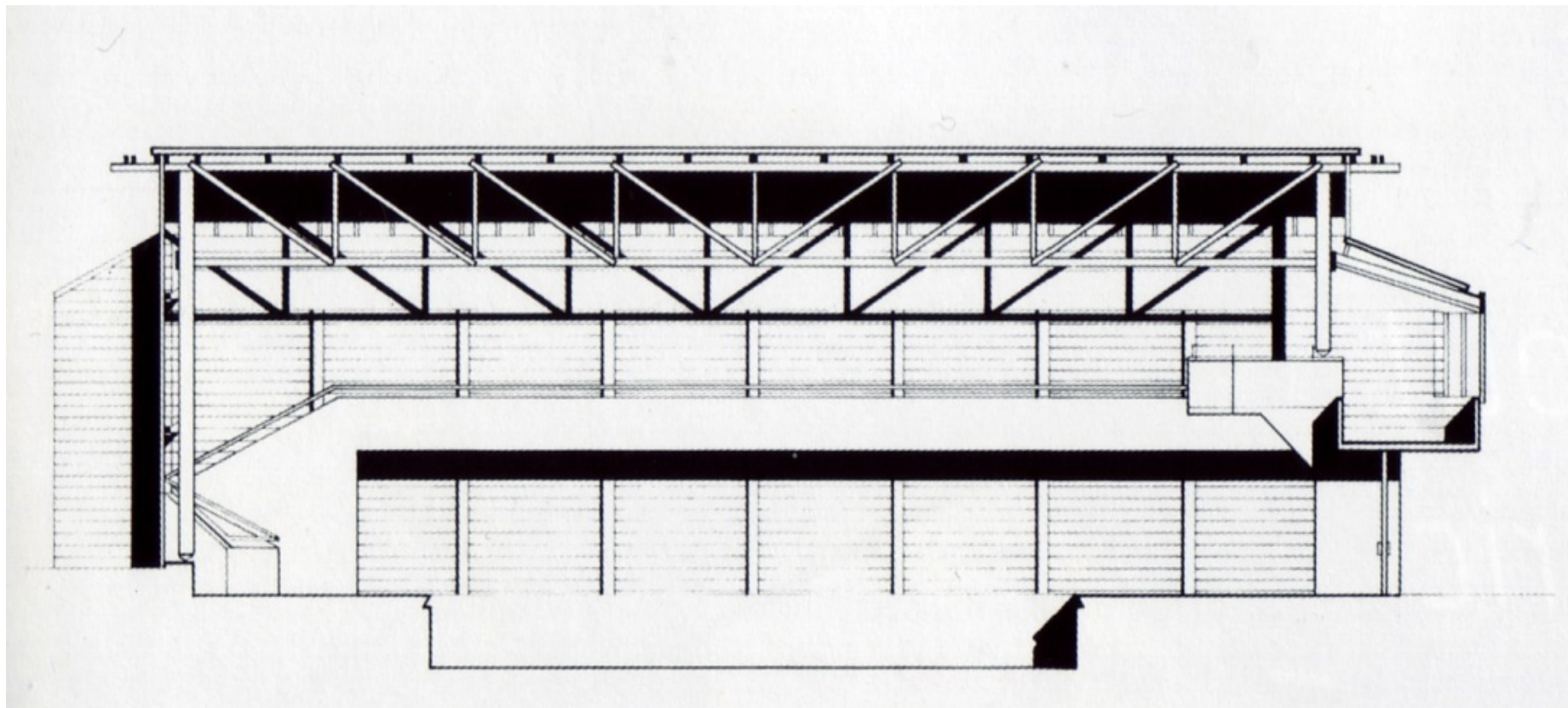
town planning documents

TP006 rev A
proposed first fp



Project No: 3-4451
Issued: for town planning
Drawn: SJ
Scale: 1:200 @ A1
Date: august 2006





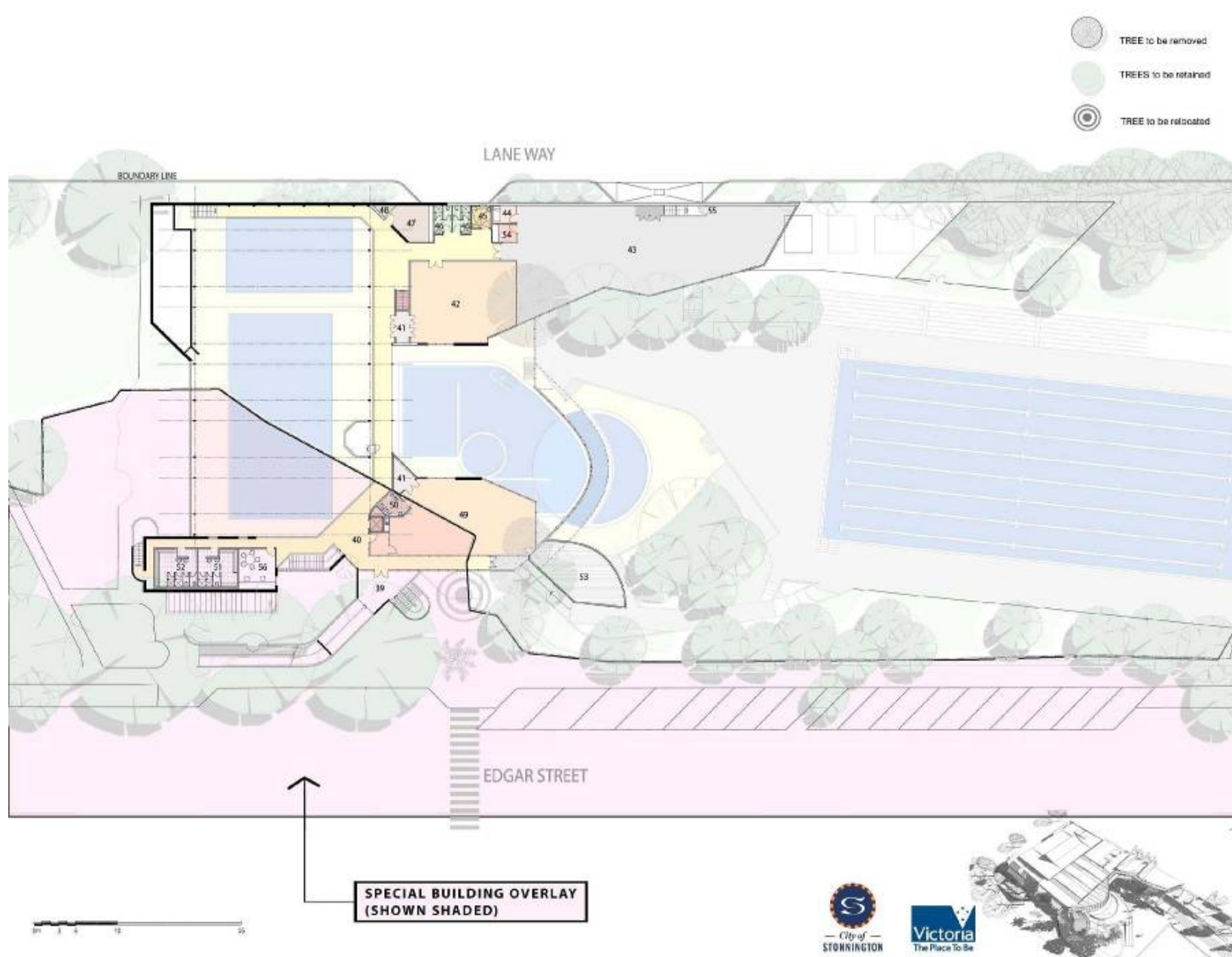


CAUTION
DEEP WATER (2.50M)
DO NOT DIVE

BOULE LANE

POOL

ARTISAN



- TREE to be removed
- TREES to be retained
- TREE to be relocated

HAROLD HOLT MEMORIAL SWIMMING CENTRE

GLEN IRIS

PEDDLETHORPARCHITECTS

Level 35, 145 W Bank Street
Melbourne, Victoria Australia 3002
Tel: 415 9925 2222 Fax: 415 953 4991
Email: info@peddlethorpe.com.au <http://www.peddlethorpe.com.au>
ACN: 084 775 684

Project No: 3 4451
HBM/04
Rev: AESTHETIC VICTORIA
Date: 5/10/2017

TP006

PROPOSED FIRST FLOOR PLAN

LEGEND

- 39. numbers entry
- 40. lobby
- 41. store
- 42. programme room
- 43. gymnasium
- 44. fitness assessment
- 45. accessible change
- 46. staff wc
- 47. staff room
- 48. water fountains
- 49. children's programme room
- 50. children's wc
- 51. male change
- 52. female change
- 53. possible future desk
- 54. office
- 55. emergency egress stair
- 56. centre manager office







June 2009



HAROLD HOLT MEMORIAL SWIMMING CENTRE

GLEN IRIS

PEDDLETHORPARCHITECTS

Level 26, 144 W Blain Street
Melbourne, Victoria 3000
Tel: 61 3 9723 2222 Fax: 61 3 9723 4781
Email: info@pda.com.au <http://www.pda.com.au>
ACN: 808 975 885

Project No: 3-4401
Issued: HERITAGE
Rev: HERITAGE VICTORIA
Date: SEPTEMBER 2007

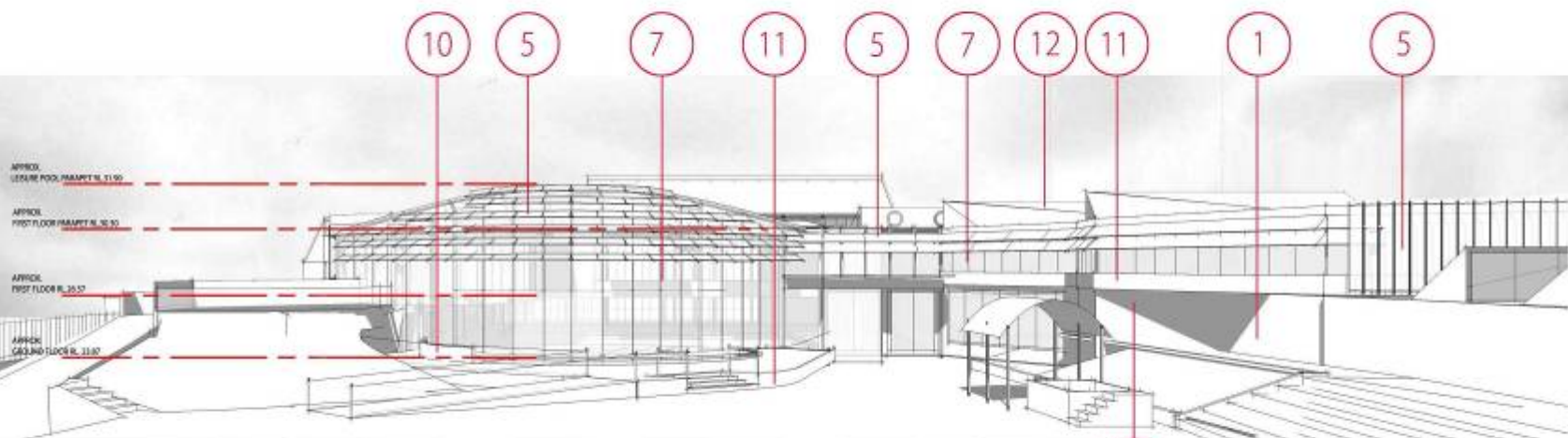
TP008 PROPOSED ELEVATIONS

LEGEND:

- 1: existing brickwork
- 2: existing glazed skylight
- 3: existing roof (galvalume metal deck)
- 4: existing off form concrete (pilot removed)
- 5: glass sunscreens
- 6: glass infill
- 7: aluminium framed glazing
- 8: chainwire mesh boundary fence
- 9: existing glazing
- 10: dark wall tiled finish
- 11: off-form concrete
- 12: colorbond roof sheet
- 13: concrete blockwork
- 14: signage



EAST ELEVATION VIEW FROM EDGAR STREET



NORTH ELEVATION VIEW FROM 50m POOL

NOTE: ALL LANDSCAPING INCLUDING TREES HAVE BEEN LEFT OFF THE IMAGES FOR BUILDING CLARITY. SEE ATTACHED PERSPECTIVES FOR SITE CONTEXT REFERENCES.



HAROLD HOLT MEMORIAL SWIMMING CENTRE

GLEN IRIS

PEDDLETHORPARCHITECTS

Level 26, 118 W. Blair Street
Melbourne, Victoria 3000
Tel: 61 3 9722 2222 Fax: 61 3 9576 4781
Email: info@pda.com.au <http://www.pda.com.au>
ACN: 858 979 885

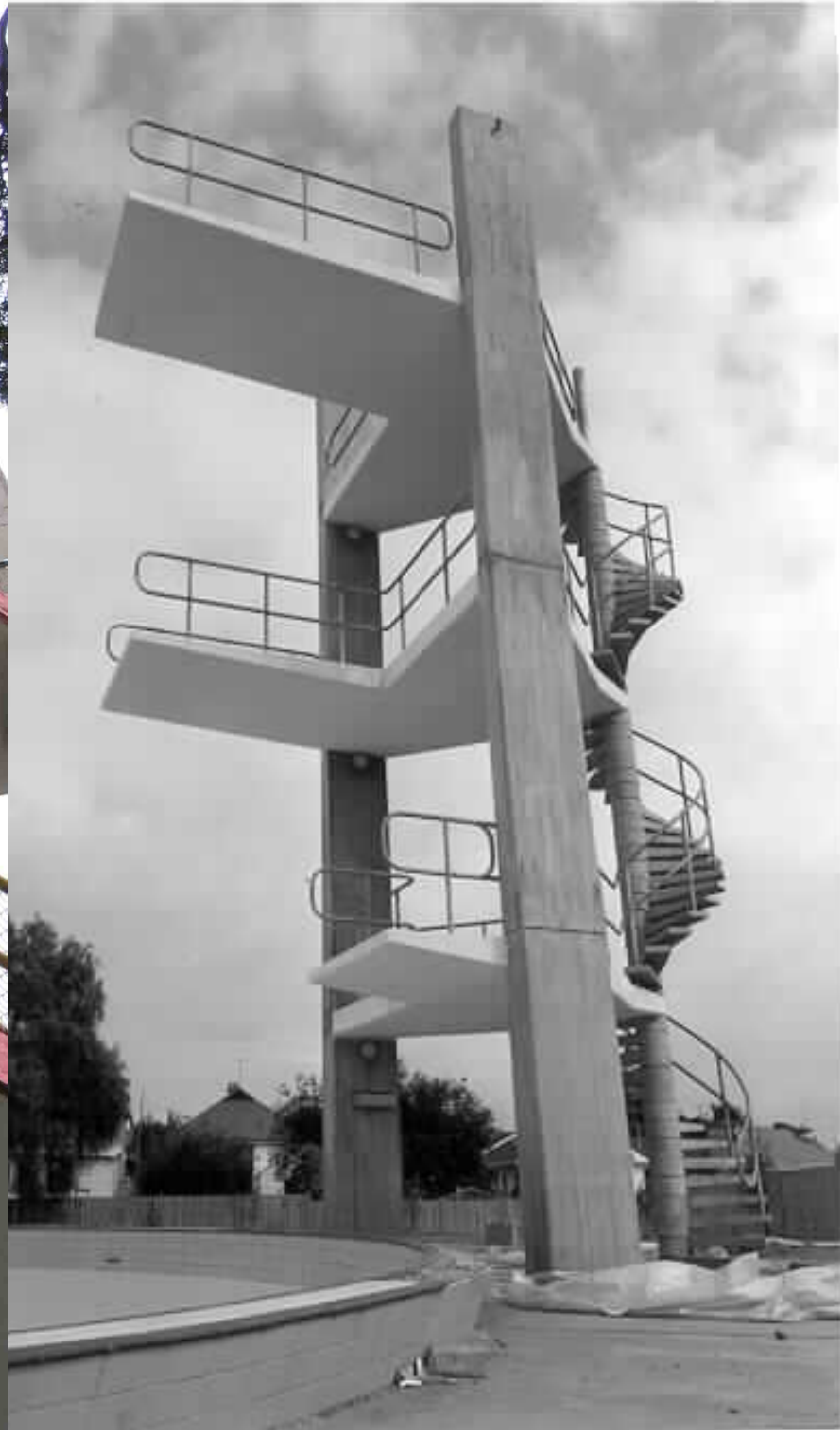
Project No: 3-4401
Issued: HERITAGE
Rev: HERITAGE VICTORIA
Date: SEPTEMBER 2007

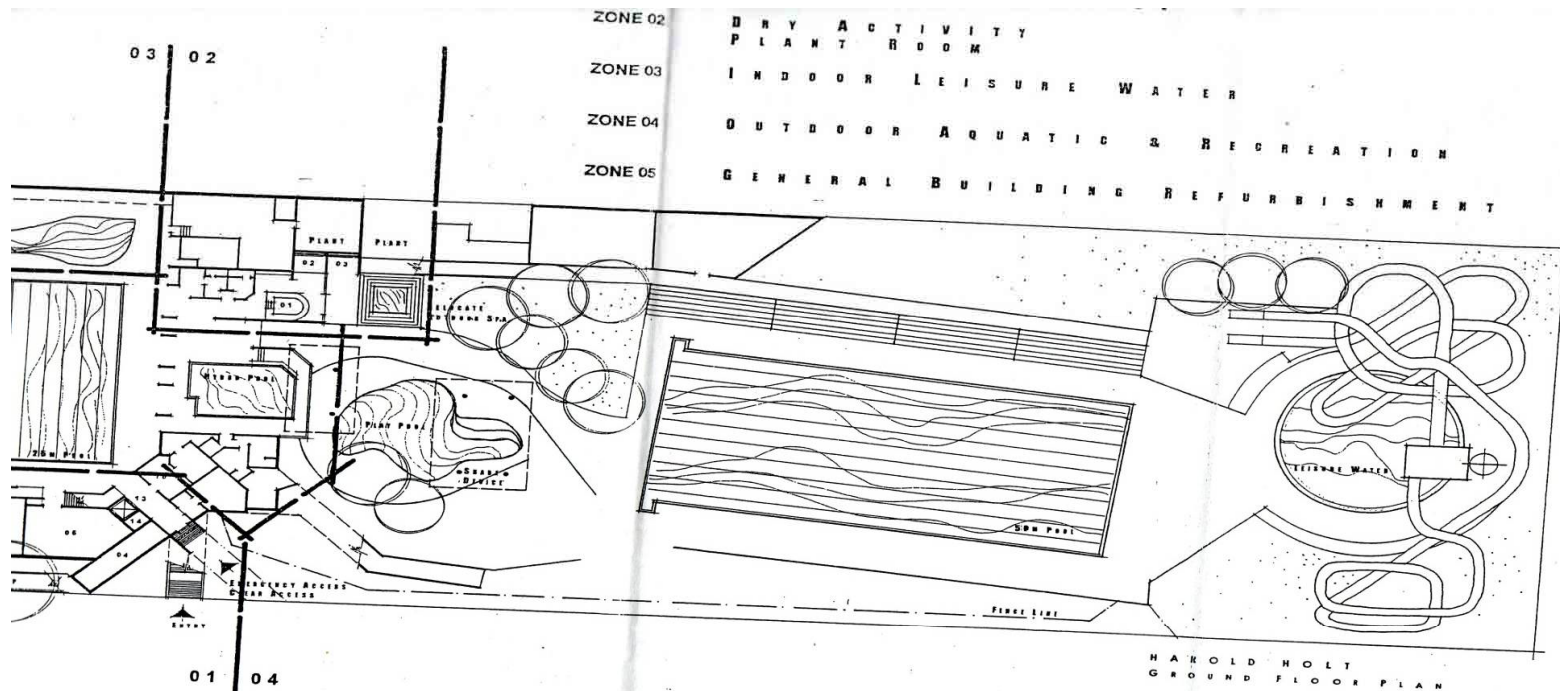
TP011 
PERSPECTIVE
IMAGE



VIEW FROM NORTH 1







- | | | | |
|----|---------------|----|---------------------|
| 01 | INDOOR SPA | 09 | OUTDOOR PLAY |
| 02 | SARUN | 10 | FIRST AID |
| 03 | CHANGE | 11 | OUTDOOR EATING AREA |
| 04 | STORAGE | 12 | ENTRY |
| 05 | FEMALE CHANGE | | |

DOCUMENT OBT.
UNDER FREEDOM
INFORMATION









HAROLD HOLT MEMORIAL SWIMMING CENTRE

GLEN IRIS

PEDOLETHORPARCHITECTS

Level 28, 148 St Kilda Street,
Melbourne Victoria Australia 3000
Tel: 61 3 9123 1222 Fax: 61 3 9123 4161
Email: info@pedolethorpcorp.com.au
A&A: 80A 915 888

Project No. 3-4201

Staged HERITAGE

Rev. HERITAGE VICTORIA

Date: SEPTEMBER 2007

TP009
PERSPECTIVE
IMAGE



VIEW FROM EDGAR STREET 1





CITY OF HEAVEN
HOLT MEMORIAL SWIMMING CENTRE



HAROLD HOLT
SWIM CENTRE

HAROLD HOLT MEMORIAL SWIMMING CENTRE

GLEN IRIS

PEOPLE THORP ARCHITECTS

Level 06, 131 W Glen Street
Melbourne, Victoria Australia 3040
Tel: 61 3 9493 1202 Fax: 61 3 9493 0881
Email: info@peoplethorpe.com.au http://peoplethorpe.com.au
ACN: 805 575 685

Project No: 2-4401

Issued: HERITAGE

Rev: HERITAGE VICTORIA

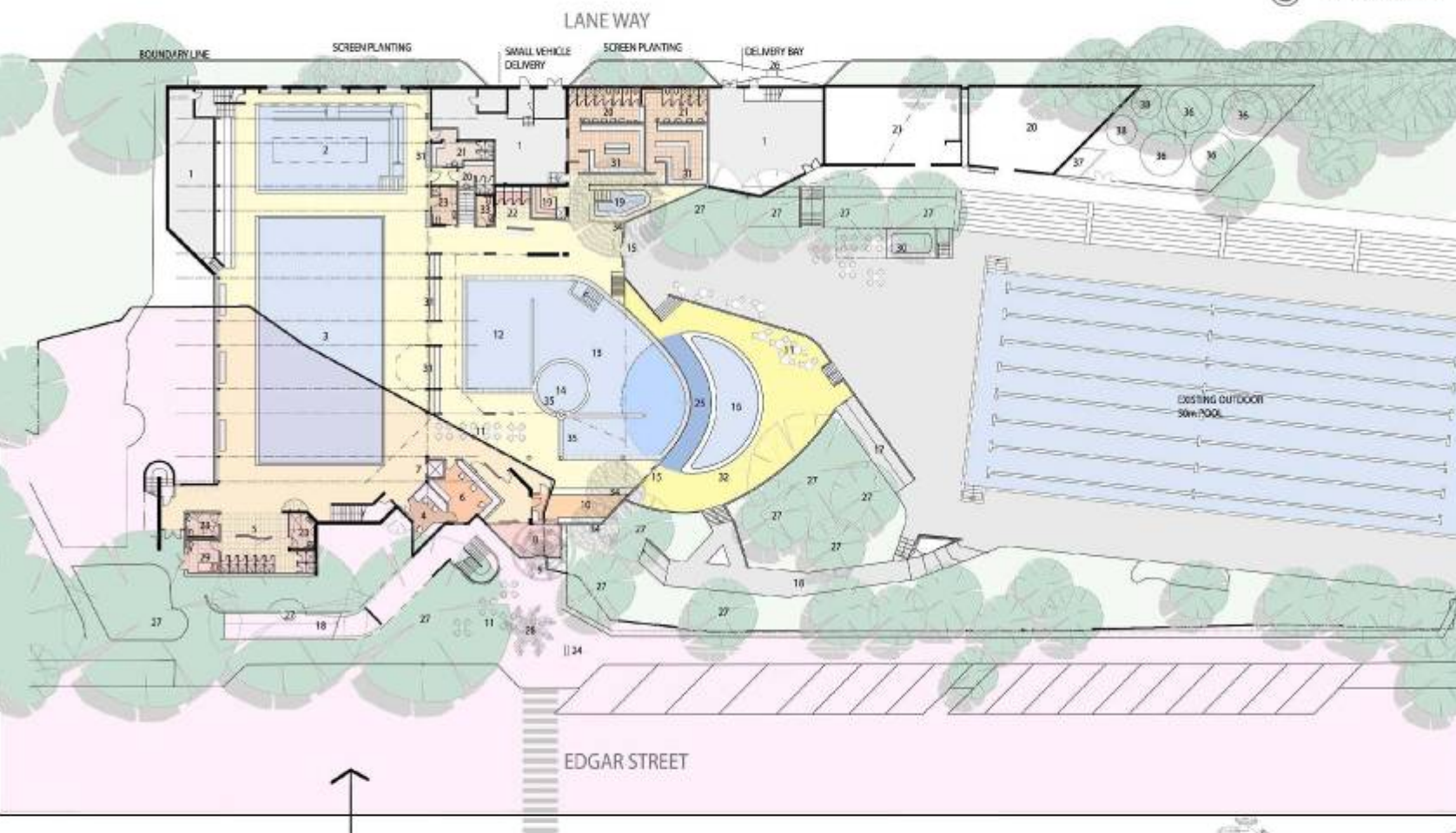
Date: SEPTEMBER 2007

TP005

PROPOSED GROUND FLOOR PLAN

LEGEND

1. plant
2. hydrotherapy pool
3. existing 25m lap pool
4. office / administration
5. change village
6. reception
7. lift
8. entry / air lock
9. entry
10. kitchen / service
11. cafe seating area
12. leisure to swim pool
13. leisure water pool
14. toddler pool (indoor)
15. external access
16. outdoor toddler pool & splash decks
17. ramp access
18. existing ramp
19. spa / sauna
20. female ambulant change
21. male ambulant change
22. change cubicles
23. accessible change
24. signage
25. soft fall concourse
26. delivery bay
27. significant trees retained
28. relocated palm tree
29. first aid room
30. reconfigured spa / gazebo
31. seating
32. dwarf wall
33. accessible toilet
34. trees to be removed
35. beach entry
36. rain water tanks
37. rain water harvesting treatment plant
38. back wash tanks



**SPECIAL BUILDING OVERLAY
(SHOWN SHADED)**



HAROLD HOLT MEMORIAL SWIMMING CENTRE

GLEN IRIS

PEDDLETHORPARCHITECTS

Level 26, 140 William Street
Melbourne, Victoria Australia 3008
Tel: 61 3 9523 2222 Fax: 61 3 9523 4791
Email: info@pda.com.au <http://www.pda.com.au>
ACN: 026 175 648

Project No: 3-4451

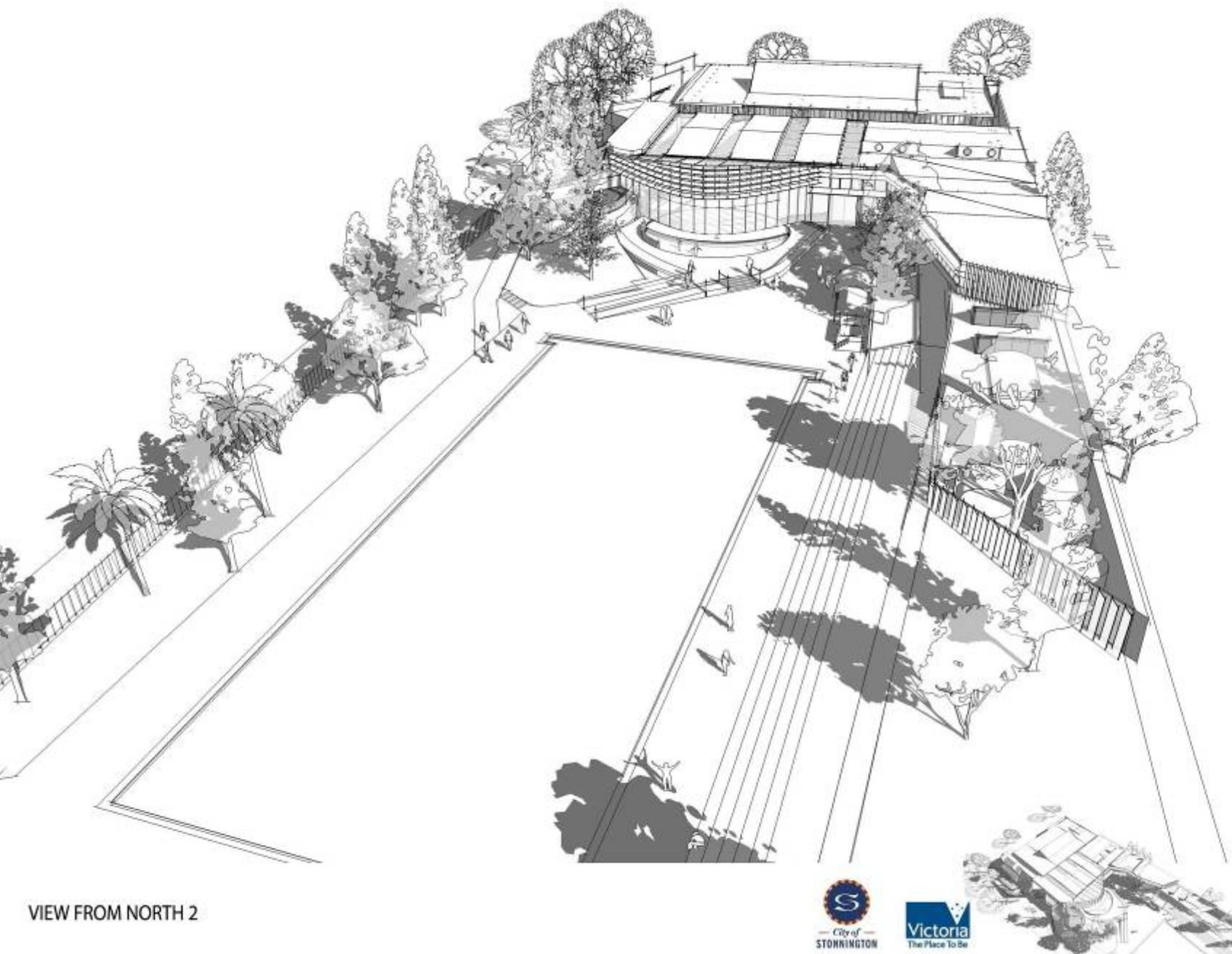
Issued: HERITAGE

Rev: HERITAGE VICTORIA

Date: SEPTEMBER 2007

TP012

PERSPECTIVE
IMAGE



VIEW FROM NORTH 2





