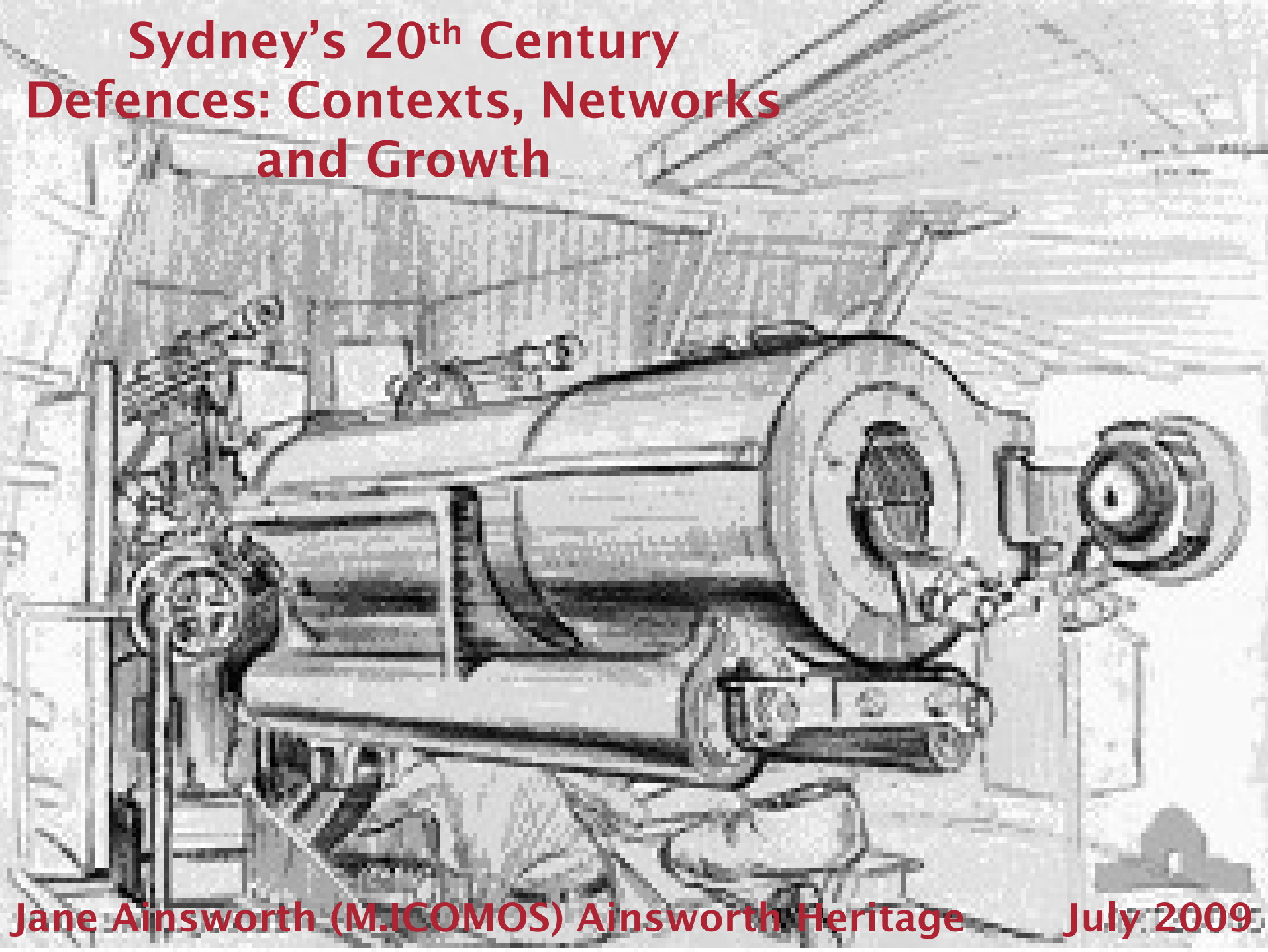


Sydney's 20th Century Defences: Contexts, Networks and Growth



Overview

The Context of Defence Sites:

Geographical and technological influences.

Defence Networks and Systems:

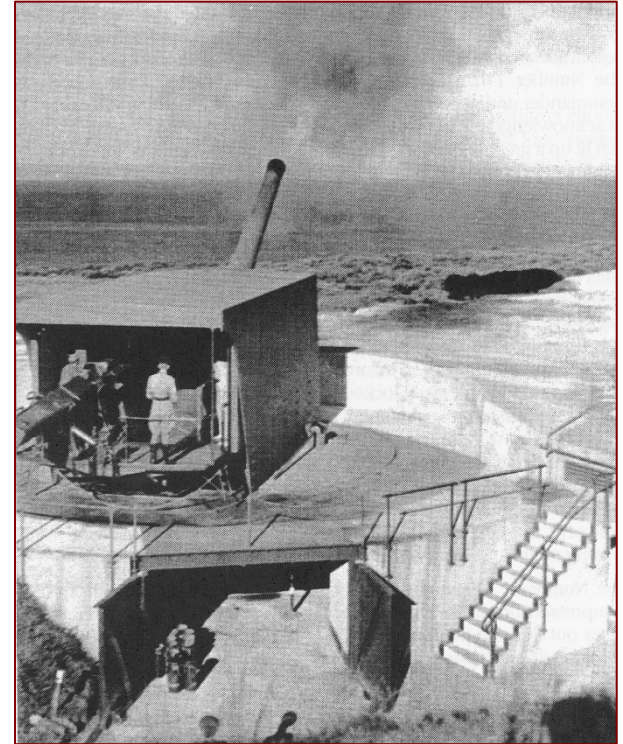
What these are and how they functioned.

20th Century Defence Sites:

Phenomenal growth of the network during
The 20th Century.

Assessing & Managing Defence Sites:

The influence of context on site assessment and
management.



Cape Banks 9.2" Gun Emplacement

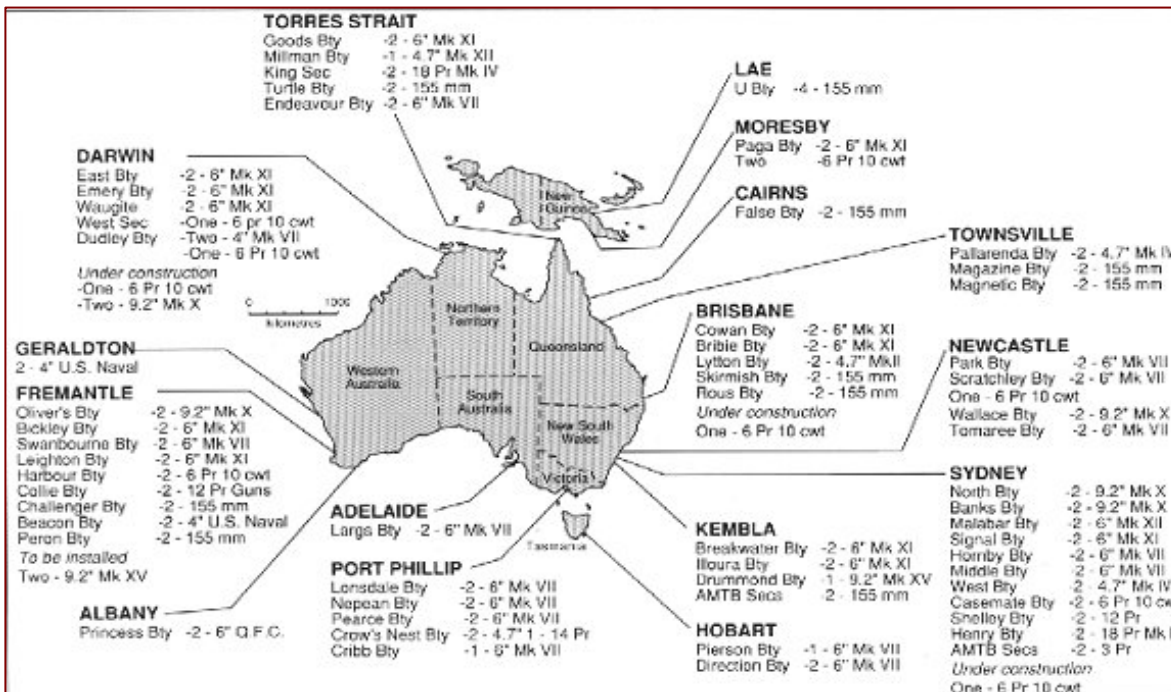
Definitions

Defence site:

Sites whose intended purpose was primarily defensive, as opposed to sites that functioned as support for the Defence Forces.

Network of Defence:

A group of sites designed to defend against a particular type of attack, such as a network of anti-ship defences.



Australia's heavy Anti-Ship batteries, World War II

System of Defence:
A group of individual defence sites which were strategically designed to work together as a comprehensive system of integrated defence for a specific area.



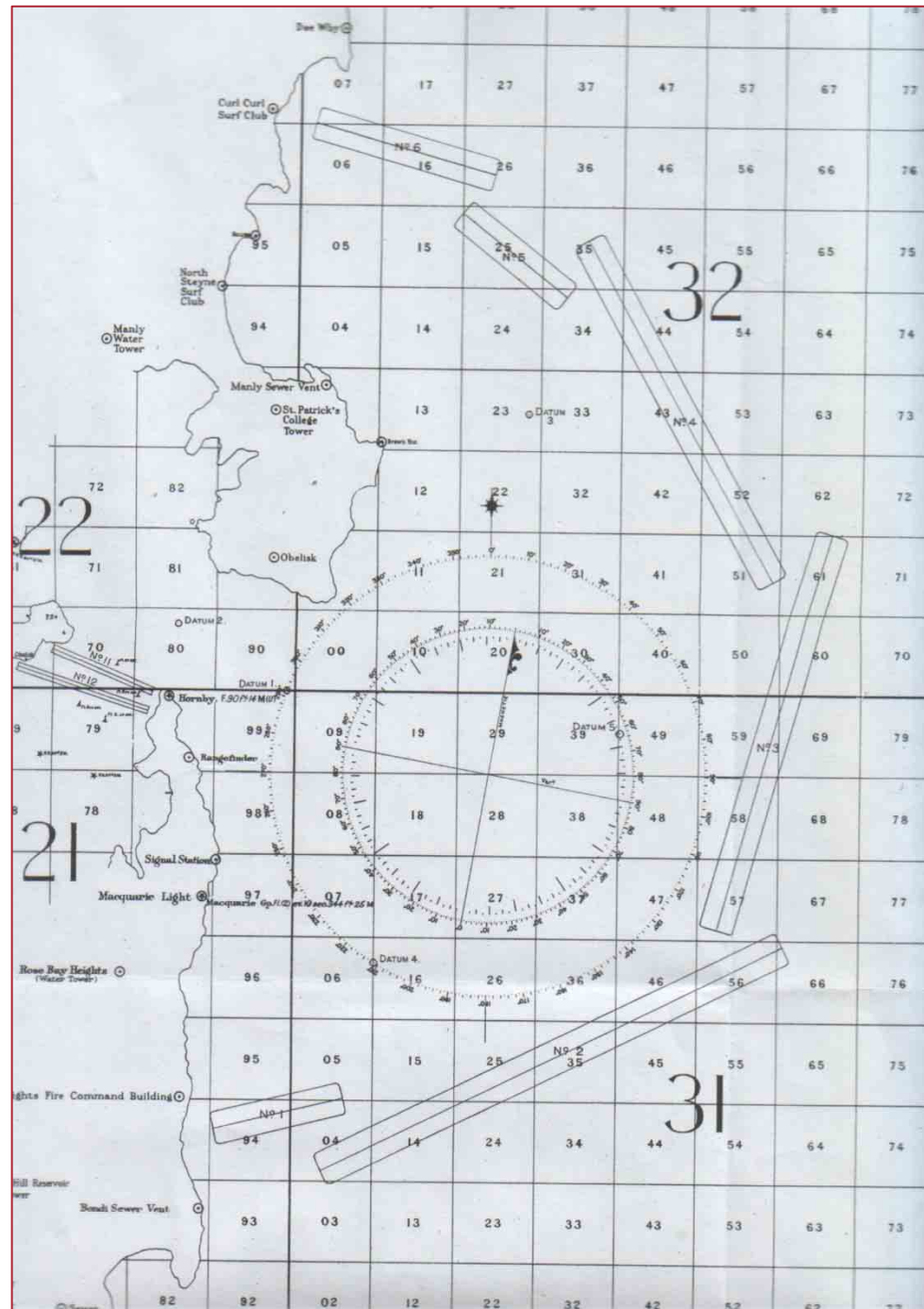
**Context, Context,
Context!
Geographical
Influences**

Technological Influences

Lane Cove Bridge Searchlight

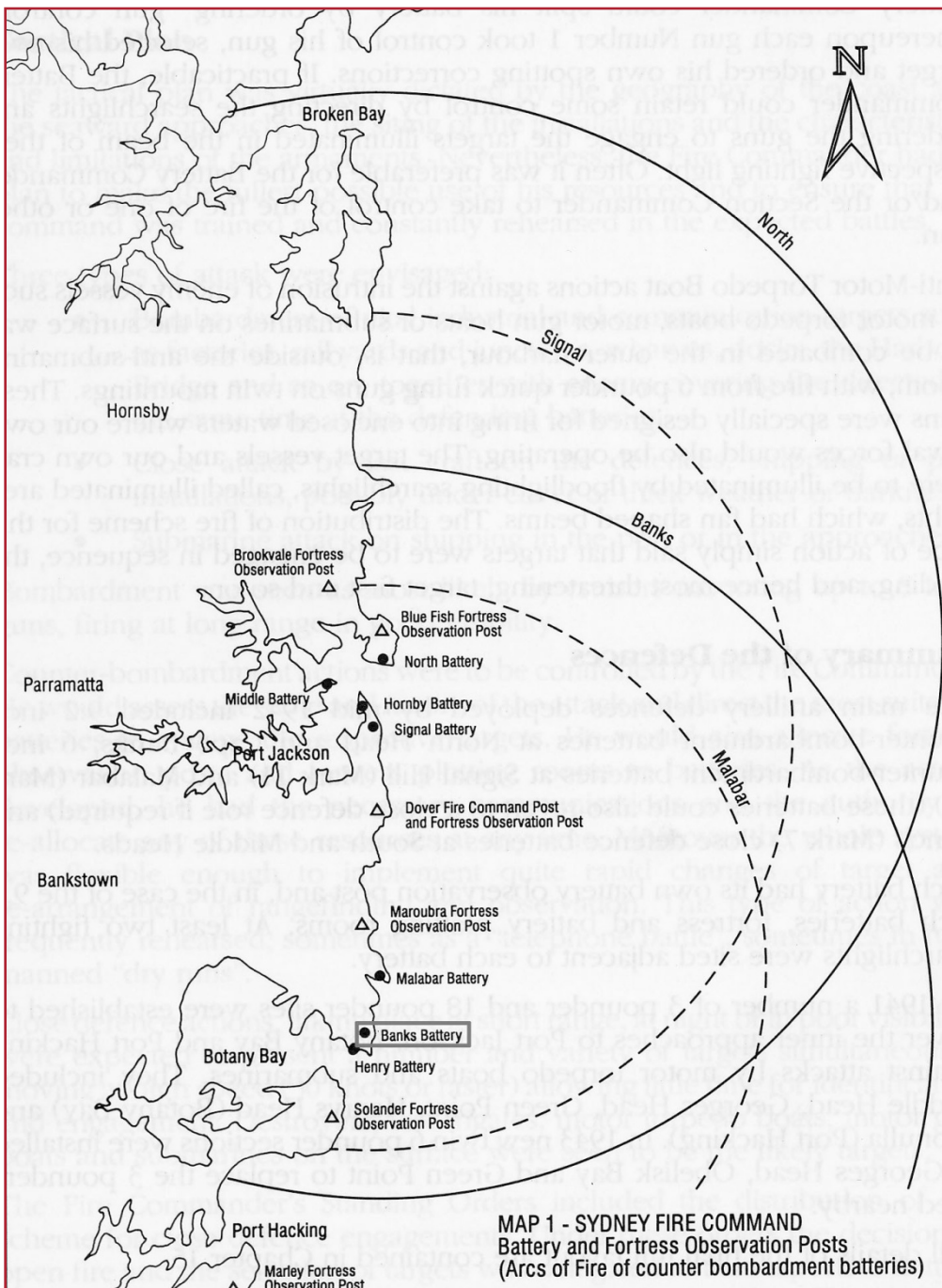


Richmond RAAF Base

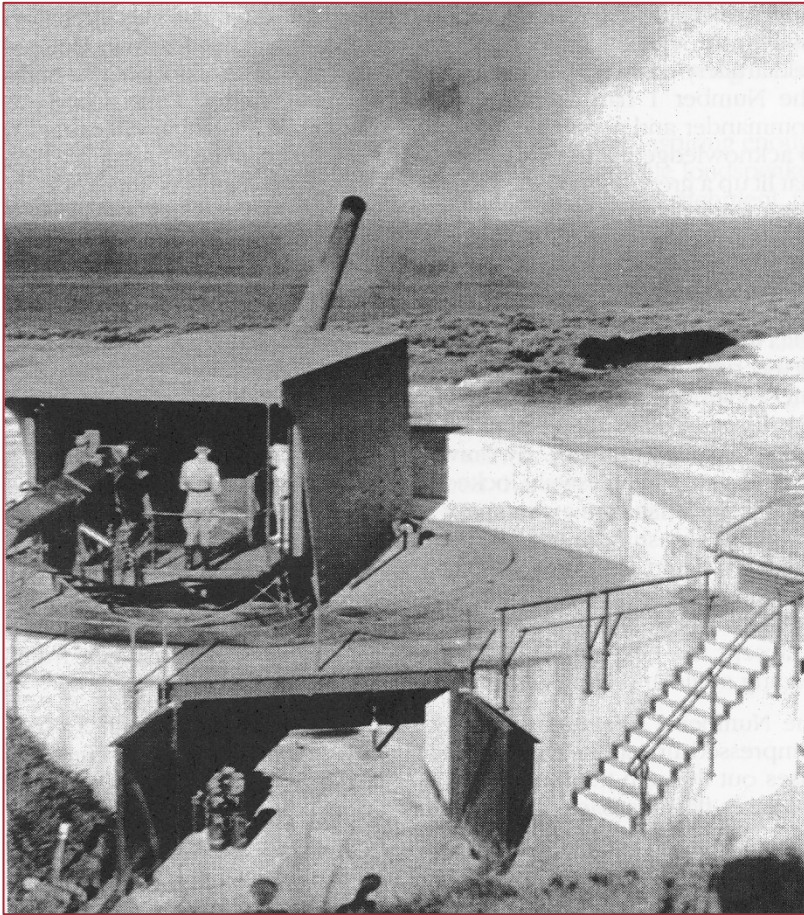


SITE INTER-RELATIONSHIP:

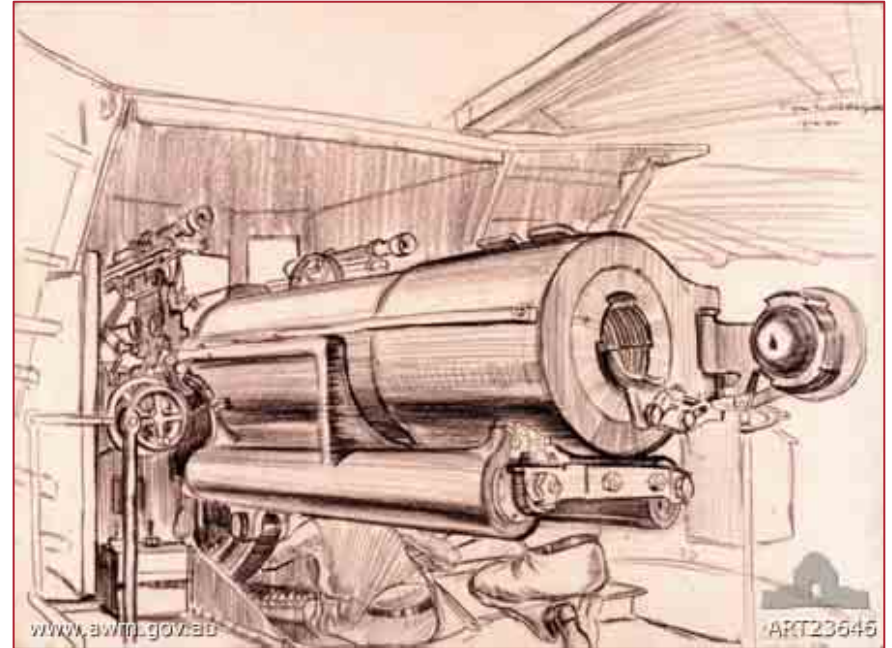
**Arcs of Fire for
counter-bombardment
batteries.**



Defence Networks – Anti-Ship



Cape Banks 9.2" Gun Emplacement

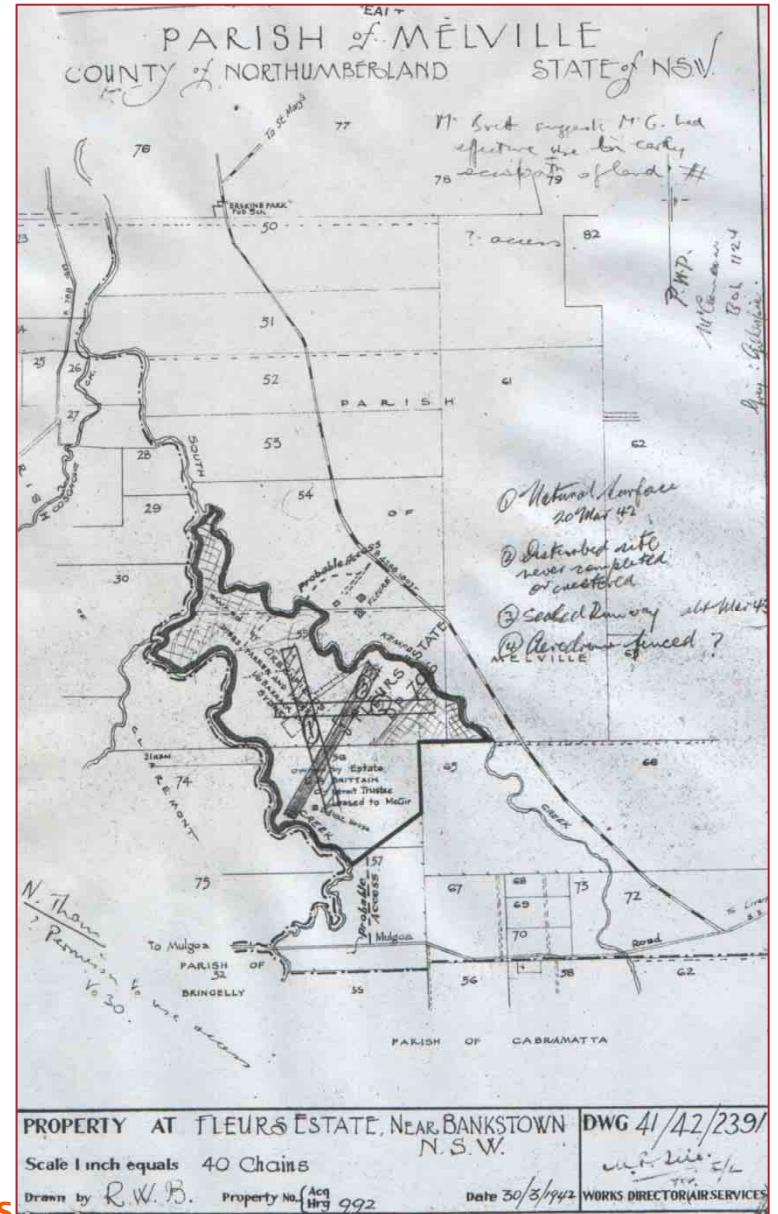


Georges Heights 6" BL gun

Defence Networks – Anti Aircraft

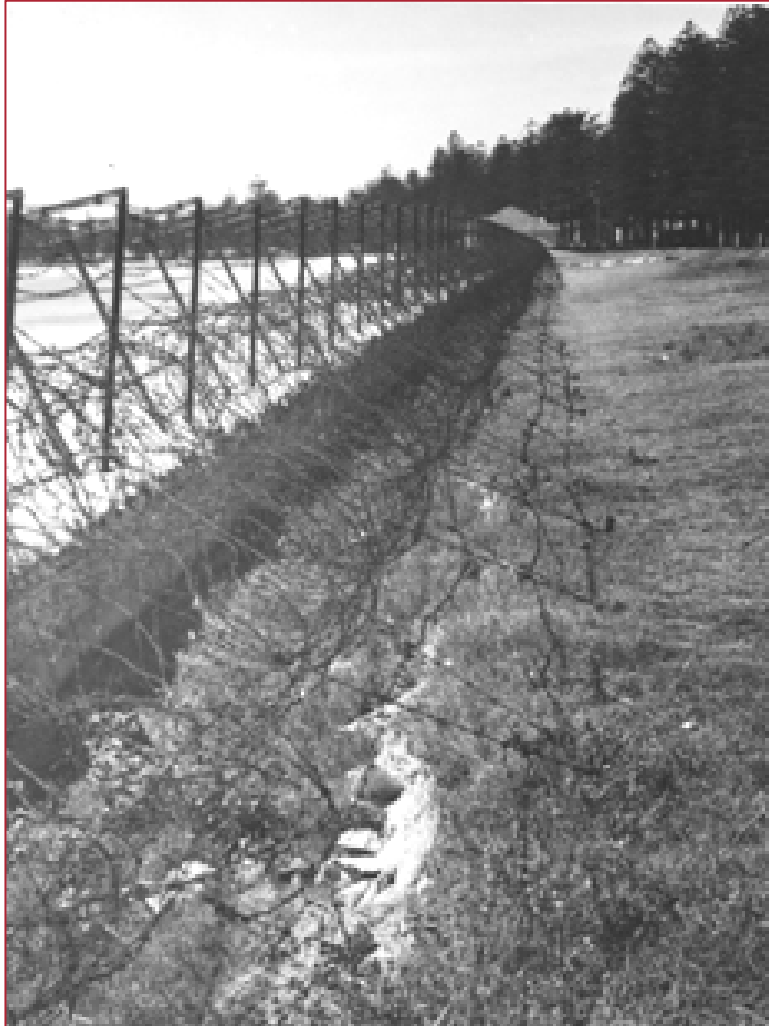


3.7" gun emplacement – likely Kensington Golf Links



Defence Networks – Anti Invasion

Anti-invasion barbed wire over
Manly sea wall, 1942

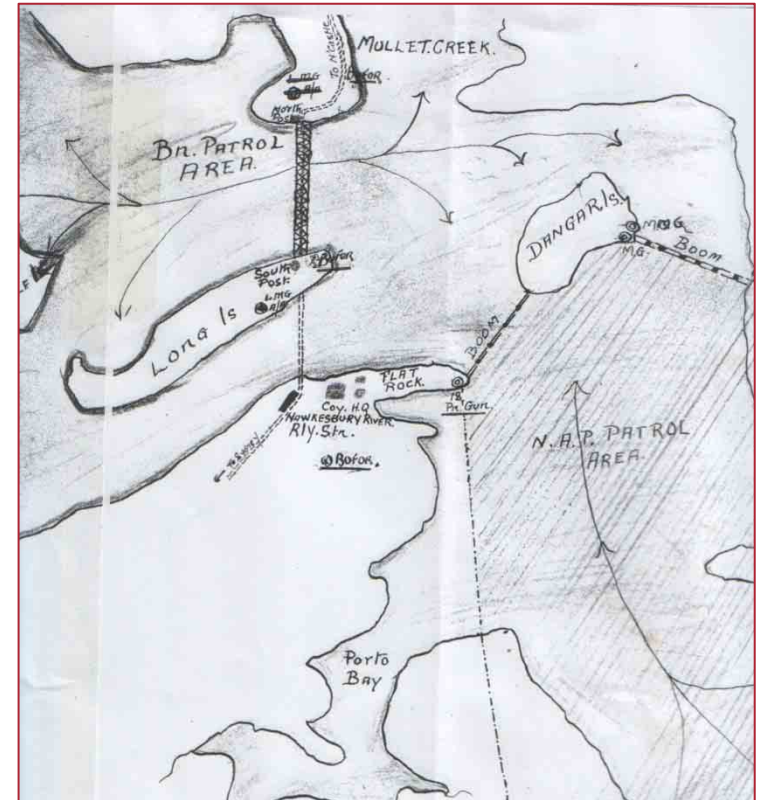


Digging a defensive ditch at Mona
Vale on Sydney's northern
beaches

Defence Networks – Seward Defences



Sydney Harbour boom net



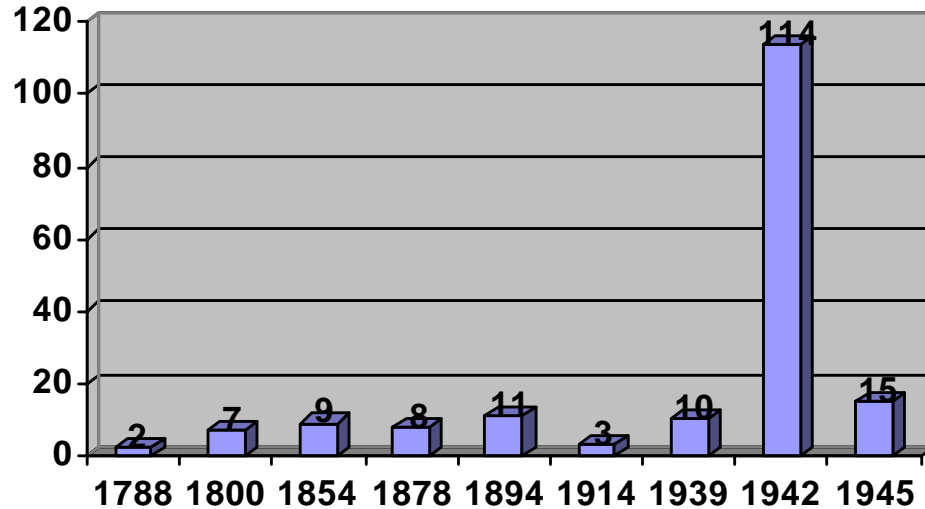
Location plan of boom nets across Broken Bay in Sydney's north

Defence Systems

During the 20th century, 4 defence systems operated in Sydney:

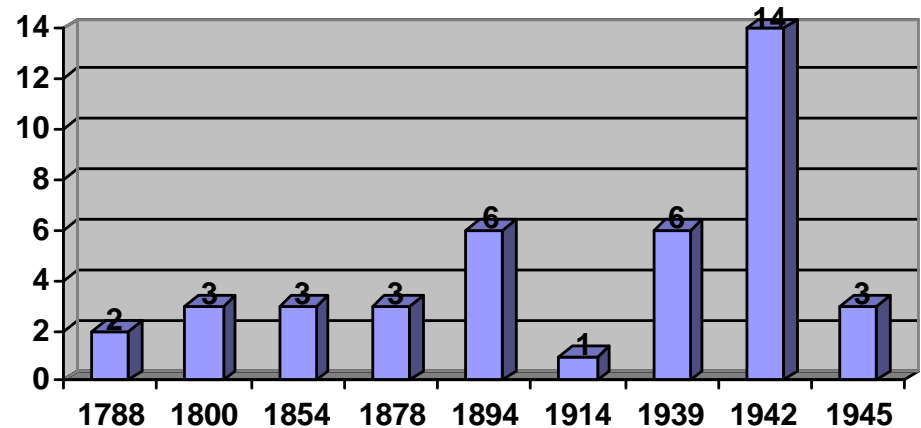
- Post-Federation**
- Inter-War Expansion**
- Sydney Fortress Phase I**
- Sydney Fortress Phase II**

20th Century Defence Sites: Phenomenal Growth



Increase in numbers of defence sites in Sydney from 1788 to 1945

Increase in numbers of site types in Sydney from 1788 to 1945



Conclusions

- What was the context?
- How does it relate to this site; and
- What does this mean for my management of the site?

janea@ainsworthheritage.com.au